

## Red Blotch Disease and the Virus Status of CDFA-certified Grapevine Stock

James A. Stamp, Ph.D., Alan Wei, Ph.D.

Dr. **James A. Stamp** is a Sebastopol, California scientist who specializes in the critical evaluation of vineyard performance issues and grapevine nursery plant material quality and propagation. He has more than 25 years of viticulture experience and established Stamp Associates after founding Novavine grapevine nursery, working in the plant biotech industry and completing a post-doctorate at UC Davis. Stamp Associates advises growers and winemakers in the U.S. and overseas in the establishment and management of high-quality, pathogen-tested vineyards. Contact Dr. Stamp at [james@jamesstamp.net](mailto:james@jamesstamp.net).

Dr. **Alan Wei** is the general manager of Agri-Analysis LLC, located in West Sacramento. He has more than 25 years' industry experience in developing microbial detection technologies, ranging from high sensitivity ELISA, PCR, qPCR, high throughput screening and in-field methods. He has more than 20 issued United States' Patents in this and related areas. Dr. Wei enjoys interacting and working with growers to learn from them and help identify and solve problems for them. Agri-Analysis is a laboratory that tests for Red Blotch and other grapevine viruses to help growers protect their investments. Contact Dr. Wei at [apwei@agri-analysis.com](mailto:apwei@agri-analysis.com).

**THE DISCOVERY OF GRAPEVINE** Red Blotch-associated Virus (GRBaV, Red Blotch) in 2012 focused the industry on Red Blotch disease—an unknown condition with recognizable symptoms that growers had been aware of for some time. GRBaV has been found in new planting materials as well as in established vineyards in California and several other winegrowing states in the U.S. During the past 18 months, in an effort to curb disease spread, key stakeholders from the “farm-to-table” supply chain have invested significant time and money to better understand GRBaV. Universities, nurseries, growers, professional associations, industry leaders and testing laboratories have played a critical role in addressing this emerging challenge to the wine industry.

“The discovery of the Red Blotch virus will be a major factor in improving the program and reducing virus problems in nursery stock,” said Dr. **Deborah Golino**, director of **UC Davis Foundation Plant Services**. “For many years, growers, nurseries and researchers have been frustrated by seeing vines in the field with red leaf symptoms that tested negative on all the available laboratory tests for grapevine viruses. In my experience, every year cases were found where laboratory tests were negative, but vines did not look normal, and leafroll virus infection was suspected. We know now that many of those problem vines were infected with Red Blotch virus.”

The growing prevalence of the disease is clear from the recent designation by the **California Department of Food and Agriculture (CDFA) Pierce's Disease/Glassy-Winged Sharpshooter (GWSS) Board** of GRBaV, vine mealybug and brown marmorated stink bug as pests of winegrapes. This designation positions the board to quickly respond to specific outbreaks with education and outreach efforts and target research projects for longer-term control efforts. Further evidence of the growing importance of Red Blotch and its potential economic impact was reported by the **Australian Broadcasting Corporation Rural's Lucie Bell** on April 14, 2014, who noted that West Australian Nationals MP **Vince Catania** had called for an immediate halt to American table grape imports to allow new research on Red Blotch to be considered. Catania wrote to Western Australian Agriculture Minister **Ken Baston** and Federal Agriculture Minister **Barnaby Joyce**, calling for a moratorium and full pest risk analysis to be conducted. Catania said new research showed that parts of the plant that carry GRBaV are more widespread than originally thought and that the virus may be found in fruit. The grape industry is estimated to be worth \$900 million to Western Australia by 2015.



PHOTO 1 Red Blotch in CS04, November 7, 2012

Red Blotch symptoms in red varieties include development of characteristic pink-red blotchy regions on the leaf blade, which resemble those associated with leafroll virus disease (**PHOTO 1**, **PHOTO 3** page 43). Unlike leafroll disease, however, veins of Red Blotch-infected vines turn red. The timing of appearance of symptoms can depend on variety, season and climatic conditions. Some growers reported sighting light yellow hues in Red Blotch-infected Cabernet Franc in June. Although GRBaV was named after the appearance of symptoms found in red varieties, it is also present in white varieties. White varieties do not display red leaves, but instead the leaves may develop a yellow or chlorotic hue similar to that seen in leafroll-infected vines (**PHOTO 2**). Some white varieties, such as Sauvignon Blanc, may appear asymptomatic. Asymptomatic vines can remain productive, but they also harbor viruses and act as potential reservoirs for virus spread to susceptible vines.

This article follows one from March 2013 on the impact of grapevine Red Blotch virus<sup>1</sup>. The objective here is to highlight recent developments in our understanding of Red Blotch disease and to bring attention to the presence of leafroll virus found in certified grapevine nursery stock.

## Recent Developments in Our Understanding of Red Blotch

Since identification and characterization of GRBaV in late 2012, the following has become understood:

- GRBaV is widely prevalent in CDFA-certified grapevine increase blocks, especially scion blocks.
- GRBaV is also found in CDFA-certified rootstock blocks but at lower frequency than in scion materials.
- GRBaV is frequently found in non-CDFA-certified scion field selections and clones.
- White varieties may also be contaminated with GRBaV.
- Red Blotch in white varieties resembles leafroll: vines become chlorotic, but leaf rolling is not commonly observed (**PHOTO 2**).



RHONDA J. SMITH, VITICULTURE FARM ADVISOR UNIVERSITY OF CALIFORNIA COOPERATIVE EXTENSION

**PHOTO 2** Chardonnay with GRBaV

- In red varieties there is strong correlation between the presence of Red Blotch symptoms and GRBaV (**TABLE 1**). This suggests that removal of symptomatic vines may help control the disease.
- GRBaV is a gemini virus composed of circular DNA in its genome. As such, this virus is considerably more stable than RNA-based grapevine viruses, such as fanleaf, leafroll and vitiviruses (including GVB, causative agent of corky bark disease).
- Two distinct variants of GRBaV have been identified.
- Koch's Postulates have been proven for Red Blotch disease, i.e., it has been demonstrated that GRBaV is the causative agent (**Marc Fuchs, Cornell University**).
- The disease and virus are graft-transmittable, and the most likely source of contamination of new vineyards is infected plant material.

**TABLE 1** Correlation between symptoms and presence of GRBaV in adjacent vines



Symptomatic?	
No	Yes
GRBaV positive	
No	Yes

- Some growers report that the virus can be transmitted between established grapevine plants, but we do not know the mechanism. Year-on-year anecdotal observations suggest that vines are potentially contaminated from a focal source—that may be associated with riparian habitats—and that vines ever distant from the source may become contaminated by an unknown mechanism.
- A report from researchers at **Washington State University** suggested that the Virginia Creep Leafhopper was a vector for GRBaV. Although this insect is found in northern parts of Napa Valley, there is no evidence that this insect is a vector for GRBaV in California.
- There are no reports to-date of Red Blotch in other countries apart from the U.S. and Canada.
- Testing of California nursery product destined for out-of-state vineyards suggests that Red Blotch in other states may result from the purchase of contaminated vines from California (**TABLE 2**).

**TABLE 2** Dormant 2014 vine lots from California nurseries tested prior to shipment to the East Coast

Scion	Rootstock	% samples positive		CDFA-certified
		GRBaV	LR3	
Chardonnay 70 (96)	101-14MG	22%		CERT
Petit Verdot 02	Riparia Gloire	33%		no
Cabernet Sauvignon 47 (337)	101-14MG		13%	CERT
Pinot Noir 667	3309C	13%		no
Pinot Noir 667	101-14MG	13%		no

- AVF funded \$388,700 in research in 2013 and 2014. An additional \$29,500 was funded by the CA Rootstock Commission.

## The Effect of Red Blotch on Grapevine Plants and Productivity

It is now broadly understood that GRBaV can have a negative effect on fruit and wine quality. Whether the virus and disease have an effect on yield is less clear. Sugar accumulation may be significantly affected, with 5 to 6 degrees Brix reduction observed in wines from affected varieties. Titratable acidity elevation, pH reduction and altered tannin and phenolic components have also been reported.

Insufficiently ripened fruit can make a big difference to the bottom line for high-end wineries; and when the math doesn't add up, the solution for some is to rip out new blocks entirely and search for clean plant material (TABLE 3). There is generally a very good correlation between presence of virus, presence of foliar symptoms (easy to observe in red varieties) and significantly reduced Brix in infected vines. TABLE 3 indicates the projected impact of GRBaV on the "bottom line" at an ultra-premium winery in Napa Valley (the data from the winemaker is from fruit collected in a four-year -old

vineyard derived from certified stock). The winemaker noted that 25° Brix in the Red Blotch fruit in 2013 was unusual—in the previous two years, the Red Blotch fruit achieved only 23° Brix.

In 2013, the **University of California Cooperative Extension** evaluated the effects of GRBaV to clarify symptom development in foliage, fruit maturity and vine growth in Chardonnay, Cabernet Sauvignon and Merlot. At each of three sites, vines selected for the study were determined to be GRBaV-positive or -negative by qPCR assay, as well as negative for all leafroll-associated viruses, vitiviruses and nepoviruses. In all three varieties, fruit from vines infected with GRBaV had reduced total soluble solids in berry samples taken during ripening and at harvest as compared to vines that were GRBaV-negative. Berry samples collected from GRBaV-positive Chardonnay vines had significantly higher pH through harvest. In all three varieties, fruit from vines infected with GRBaV had elevated titratable acidity in all sample dates and at harvest<sup>2</sup>.

**TABLE 3 The bottom line: The effect of Red Blotch on wine value at a Napa Valley winery**

Red Blotch	Wine category	Harvest sugar	Seed components	Tons/acre	Cases/ton	Gal/ton	\$/gal	\$/case	FOB Gross wine revenue/acre
NEG	Reserve	28° Brix	Complete ripening	3	50			\$600	\$90,000
POS	Bulk	25° Brix	Impaired ripening*	2		150	\$25		\$7,500

\*immature pigment and phenolic components



Removing hardware in advance of tear-out of a fourth leaf Red Blotch-infected vineyard in Napa Valley

## Demonstration of Graft Transmission of GRBaV

The origin and transmission route for GRBaV remain uncertain except that we know that it is graft-transmissible. Agri-Analysis tested CS08/110R green benchgrafts from the 2013 season submitted by a grower after just three weeks of greenhouse propagation. Tissue samples were collected from four different regions of the benchgrafts: 1) new green shoot tissue; 2) original scion wood; 3) rootstock adjacent to the graft union and 4) rootstock distant from the graft union. The samples were analyzed by both conventional PCR and quantitative PCR (qPCR), and it was found that (FIGURE 1):

- That green shoot tissue had a relatively low level of GRBaV. The relative viral DNA copy number was determined to be 290+/-89.
- The original scion wood had the highest level of GRBaV. The relative viral DNA copy number was determined to be 5,450+/-861.
- Rootstock adjacent to the graft union had modest GRBaV levels. The relative viral DNA copy number was determined to be 1,840+/-914.
- Rootstock distant from the graft union did not contain GRBaV.
- The relative virus level in the green shoot, woody scion, and upper and lower rootstock tissues (PHOTO, FIGURE 1) was 1:19:6:0, respectively. In other words, GRBaV in the green growth is about 5 percent of that in the scion wood. This result suggests that the CS08 scion wood was infected before grafting. GRBaV level in the upper portion of rootstock was 17 percent that of the scion wood. We expect the viral copies to increase as the growth continues.

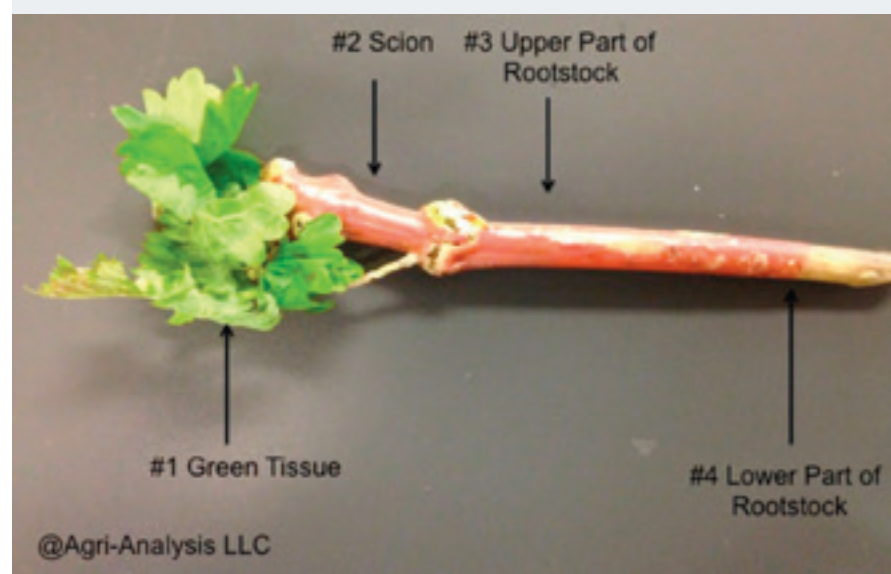
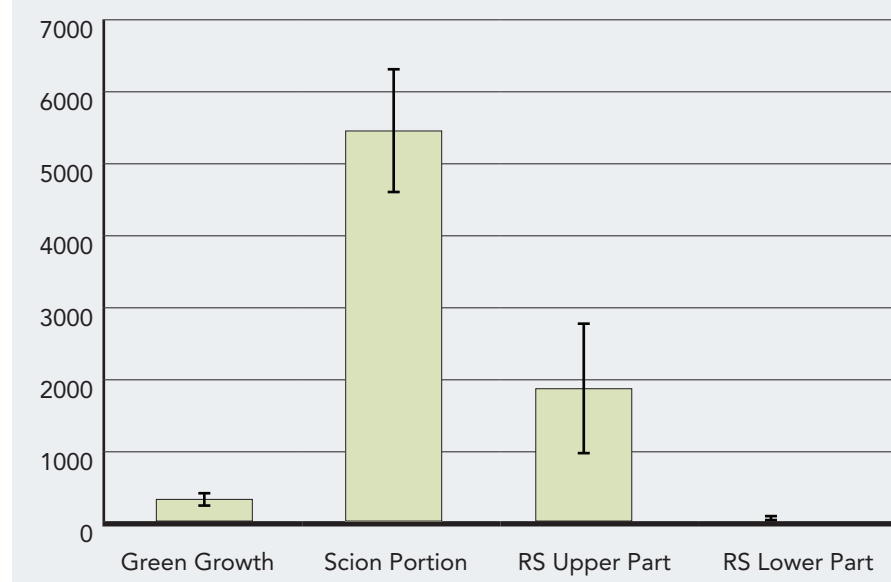


FIGURE 1 Virus levels in sampled tissues illustrated in photo above



## Nursery Response to Red Blotch

Most California nurseries have acknowledged that Red Blotch is an economic problem and have instigated internal testing programs to evaluate the extent of contamination in their increase blocks. This approach has come about in general as a result of extensive product testing by customers at or before delivery. Customers have reported results to nurseries that use this information to help determine which of their increase blocks should be tested.

Some nurseries have been more proactive than others, instigating large-scale testing of increase blocks when finished product derived from them was found to be contaminated. In general, however, much of the testing of increase blocks is still based on sampling, where a small percentage of all vines are tested for GRBaV. Usually this additional testing is for GRBaV only, as other viruses of concern to growers are not theoretically present in CDFA-certified stock. Work by the authors has demonstrated, however, that there is a reasonable likelihood that Grapevine leafroll-associated Virus type 3 (LR3) will be found in certified scion increase blocks, albeit at low levels of contamination. Consequently, customers of grapevine nurseries undertaking their own investigations should test for LR3 along with GRBaV on the assumption that LR3 is as likely to be present as GRBaV.

Discussions with nursery personnel indicate a desire for general improvement of the CDFA nursery certification program. The best option for nurseries is the ongoing release of new Protocol 2010 materials. These rootstock and scion materials are becoming available and are replacing existing standard (“classic” as called by FPS) materials that have been propagated for more than a decade. Protocol 2010 materials were released from FPS to the nurseries, after tissue culture propagation, to eliminate all known grapevine viruses and *Agrobacterium vitis* (the crown gall bacterium) and *Xylella fastidiosa* (the causative agent of Pierce’s Disease).

Although GRBaV was discovered after establishment of the FPS Protocol 2010 Foundation vine collection at Russell Ranch, subsequent testing of all planted vines failed to detect GRBaV<sup>3</sup>.

Nurseries are investing heavily in the establishment of new Protocol 2010 increase blocks distant from existing blocks and other vineyards. These increase blocks will theoretically provide clean rootstock and scion cuttings for future generations of vineyard plantings.

Several concerns must be addressed, however, to make sure the industry gets the best of these new plantings:

- Although classic FPS Foundation blocks at UC Davis are minimally contaminated with GRBaV, according to a news release by FPS, this has not prevented standard nursery increase blocks from becoming contaminated. As noted in the 2013 fall annual FPS meeting, 3,068 vines in the classic vineyard were tested for GRBaV, and only nine were found positive for the virus. The remaining vines in the classic Foundation block will be tested in fall 2014<sup>4</sup>.
- The newly established Protocol 2010 Foundation vineyard at Davis is not enclosed and it’s situated near a creek and commercial nursery—will this become contaminated by human activity or unknown vectors?
- Will nurseries keep all Protocol 2010 materials separate from classic materials? This would involve separate propagation facilities and greenhouses and separate field finishing locations.
- Vine mealybug readily transmits LR3. Will Protocol 2010 materials become contaminated with this CDFA-regulated virus just as standard materials have?

## How to Handle Potentially GRBaV-contaminated Plant Material

1. Test all incoming new nursery product by using statistically sound methods.
2. Examine vines in early fall for leafroll and late fall for Red Blotch.
3. Remove individual contaminated vines when symptoms become apparent.
4. Remove whole blocks if the contamination rate is sufficiently high. This is a difficult decision, and it is compounded by our lack of knowledge of virus transmission.
5. Hold off on planting until clean plant materials can be identified.

## Contamination of CDFA-certified Grapevine Nursery Stock with GRBaV and LR3

An efficient PCR-based test for GRBaV became available in October 2012, allowing for the effective detection of GRBaV in grapevine plants and nursery stock. Analysis of finishing 2013 season dormant vines (planted at typical densities of 17,000 vines per acre in the nursery row) demonstrated that GRBaV was present in CDFA-certified nursery stock<sup>1</sup>. By the time the industry was becoming familiar with the problem in early 2013, however, many of the nursery rootstock and scion increase blocks had been harvested for cuttings. This led to the development of sampling and testing procedures for harvested rootstock and scion cuttings<sup>5</sup> rather than the more efficient practice of testing individual increase block vines.

### Comments from the Industry

“The most important issue concerning Red Blotch is understanding the mechanism(s) of vine-to-vine spread. It is one thing to do everything you can to ensure clean planting material, but it is quite another to keep it that way. The unrecognized planting and spread of this virus prior to its identification make it an all too common resident in our vineyards. The upshot is that any vineyard you plant is likely in close proximity to Red Blotch-infected vines. How do you keep vines clean that start out that way? Stories I hear involve prophylactic use of systemic insecticides. This is not something anyone wants to do, but for many it is a current necessity. Identifying vectors, alternative hosts (if any) and ‘best practices’ to keep vineyards clean are now at the forefront of my thinking.”

Michael Anderson, UC Davis

### Comments from the Industry

“We have planted about 200 acres of new vineyard at Kunde since 2005 and have had failures of certified vines on about 20 acres of the vines planted. I would hope that our experience of a 10 percent failure rate of certified plant material is not what the industry would find acceptable. To be fair, the certification process can only be held accountable for the list of pathogens that they are testing for. While showing Dr. **Andrew Walker** certified vines with swollen graft unions, he mentioned that one possible problem with the vines could be an unknown virus. I think that the likelihood that other plant pathogens could be present in our planting material made me think that our evaluation system needs to re-emphasize vegetative indexing. If our planting material was put through more thorough visual evaluations, it is possible that some of the Red Blotch plant material may not have entered the nursery inventory. Another ongoing challenge is to identify insect vectors of plant pathogens so that our industry can protect the certified plant material from possible infection from diseased plant material.”

Steve Thomas, Kunde Family Estate

Concurrently, observations of CDFA-certified scion increase blocks and finishing dormant stock at some locations showed the presence of leafroll symptoms in materials that had appeared healthy and/or tested negative for economically important viruses previously. Limited testing of these vines determined that some materials were contaminated with LR3, and so it was deemed prudent by Stamp Associates to test all 2013 season cutting materials destined for propagation of 2013 green and 2014 season dormant vines for economically important leafroll viruses and GRBaV<sup>1</sup>.

The full CDFA nursery certification program regulations can be found in: Title 3. Food and Agriculture, Division 4. Plant Industry, Chapter 3. Entomology and Plant Quarantine, Subchapter 2. Nursery Stock, Article 5. Registration and Certification of Grapevines, Sections 3024 through 3024.8 (<https://govt.westlaw.com/calregs/>).

In an increase block, each vine is inspected by the CDFA at each growing season (§3024.5 (f) (2)). Increase blocks are tested at least once every five years by the CDFA for Grapevine Fanleaf Virus, Tomato Ringspot Virus and Grapevine leafroll-associated viruses (§3024.5 (c) (4)). Practically, however, we have found that the time of inspection of vines is critical. Leafroll and Red Blotch symptoms in scion increase blocks vary greatly, depending on the variety, season, climate and other environmental conditions. Furthermore, rootstock blocks may not exhibit obvious symptoms.

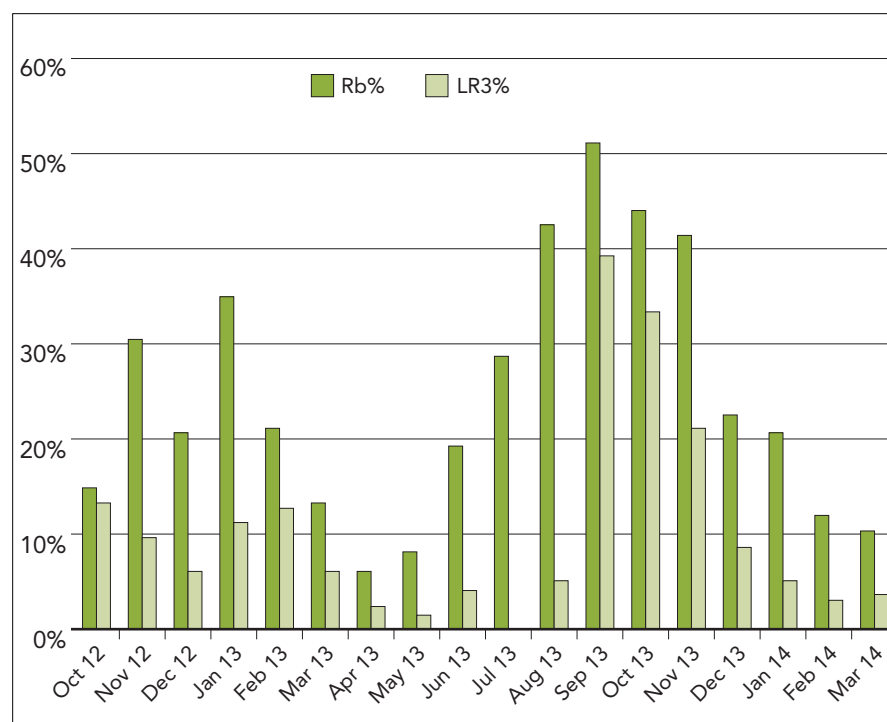
The inspection by CDFA staff referenced above (§3024.5 (f) (2)) includes inspections for general pest cleanliness, including freedom from diseases such as Red Blotch. When symptomatic plants are found, staff submit samples to the CDFA laboratory for identification. Any plants testing positive for GRBaV would not meet pest cleanliness standards for nursery stock (§3060.2), and their sale would be prohibited in California. CDFA staff may perform additional delimitation sampling around a positive find site the following year.

Over the last 20 months, LR3 has been found frequently in CDFA-certified stock (TABLE 4). The authors recommend that at the very least, all CDFA-certified plant materials should be tested independently for these two viruses before vines are purchased. Other economically important viruses have been found in CDFA-certified stock in the last 20 months but at lower incidence,

**TABLE 4 Testing of rootstock and scion increase block materials. November 2012-May 2014**

Material	Source	GRBaV	LR2	LR3	LR9
101-14MG	CDFA CERT	POS			
420A -1*	CDFA CERT	POS			
420A -2*	CDFA CERT	POS			
5C	CDFA CERT	POS			
VR 039-16	CDFA CERT	POS			
CH FPS 4	CDFA CERT	POS			
CS ENTAV 15 -1	CDFA CERT	POS			
CS ENTAV 15 -2	CDFA CERT	POS			
CS ENTAV 169 -1	CDFA CERT			POS	
CS ENTAV 169 -2	CDFA CERT	POS			
CS ENTAV 338	CDFA CERT	POS			
CS ENTAV 412	CDFA CERT	POS			
CS FPS 4	CDFA CERT	POS			
CS FPS 6	CDFA CERT			POS	
CS FPS 7 -1	CDFA CERT			POS	
CS FPS 7 -2	CDFA CERT	POS			
CS FPS 7	Field selection	POS			
CS FPS 31	CDFA CERT			POS	
CS FPS 33 (191)	CDFA CERT	POS			
CS FPS 47 (337) -1	CDFA CERT			POS	
CS FPS 47 (337) -2	CDFA CERT			POS	
MB FPS 9 -1	CDFA CERT	POS			
MB FPS 9 -2	CDFA CERT	POS			
ME ENTAV 181	CDFA CERT	POS			
PN ENTAV 943	CDFA CERT			POS	
PN FPS 90 Calera	CDFA CERT			POS	
PN Calera	Field selection 1		POS	POS	
PN Calera	Field selection 2	POS		POS	
PV FPS 2	CDFA CERT	POS			
SB FPS 1	WA STATE CERT			POS	
SB FPS 1 -1	CDFA CERT			POS	
SB FPS 1 -2	CDFA CERT				POS
SB FPS 1	Field selection	POS			

\*-1, \*-2: different increase block sources POS: positive for virus



**FIGURE 2** Proportion of all samples tested at Agri-Analysis contaminated with GRBaV or LR3. Note: Fall through the end of the dormant season is the normally accepted time to test for grapevine viruses. Fall is also the time when Red Blotch and leafroll symptoms are apparent.

including leafroll-2 and leafroll-9 (TABLE 4). A detailed study of the virus status of CDFA-certified materials, as assessed between 2000-2010, was published in *Wine Business Monthly* in 2010<sup>6</sup>.

It is considered that the most likely source of LR3 contamination is mealybug infestation at nurseries. We suspect that increase blocks and vines in certified nursery rows may become infected, after propagation, by feeding from mealybugs. Although nurseries commonly practice stringent prophylactic chemical control of mealybugs, it has been proven that LR3 can be transmitted to vines after just minutes of feeding. Furthermore, some nursery increase blocks are located close to commercial vineyards and orchards, which are potential reserves for mealybug populations.

### Comments from the Industry

“Red Blotch adds another challenge to the existing leafroll issues. The appearance of Red Blotch in nursery material has caused us to thoroughly reevaluate how we source plant material. Through our agents, we contract our own disease testing of nursery rootstock at our defined level of statistical validity. We use as much as possible our own scion wood, testing every single donor vine. We would gladly pay for these services by nurseries if done to our standards of rigor and if there were a meaningful guarantee of cleanliness. We are very careful about taking fruit from vineyards with symptoms of either virus.”

Charles Thomas, Huneus Vintners

## How to Identify Clean Grapevine Propagation Material

1. Visually inspect scion increase blocks in the fall. Examine every vine that is a potential source of budwood.
2. Reject whole blocks if any vines within the block look unhealthy.
3. Test all contiguous scion vines required for budwood in healthy blocks.
4. Test all rootstock vines required as sources for cuttings.

## Practical Implications of Contamination of CDFA-certified Stock by GRBaV and LR3

- When evaluating established scion increase blocks in the fall, it can be very difficult to find enough apparently healthy contiguous vines to provide sufficient buds for propagation. For example, over the last 20 months it has proven very difficult to find certified Cabernet Sauvignon clones that test negative for both GRBaV and LR3 (TABLE 4).
- It has always been assumed that growers should use certified stock. However, the findings of economically important viruses in certified nursery stock have made some growers less confident in using certified materials.
- Because of this, the value of a grower's own scion block has become increasingly important. It is considered that historical source data and season-by-season field observations, backed by rigorous vine-on-vine testing, can provide clean scion propagation material of higher quality than can be assumed from some certified increase blocks.

### Comments from the Industry

"The CDFA nursery certification program is broken due to inadequate protocols for dealing with Red Blotch and leafroll viruses, which have the potential to spread rapidly through insect vectors. Given the unfortunate state of the current program, growers should not rely on certification to assure that plant materials are free of known economic viruses. I strongly recommend that all growers arrange for independent lab testing of all orders before accepting delivery. The program needs to be changed immediately to require that nurseries keep permanent records of all scion budwood in their increase blocks by mother vine and that samples of that budwood from each mother vine be tested each year before grafting. No grafting using budwood from that mother vine should be allowed unless the mother vine is certified free of all known economic viruses. This will require one test annually per mother vine. While it could raise the cost of vines by \$0.50 to \$0.60, it would be well worth the extra cost. The cost of a clean vine is minor compared to the cost of pulling out and replanting a vineyard, which is what growers are facing now.

By starting with clean vines, growers can potentially extend the lives of vineyards by five to 15

years, which has an enormous economic benefit. For wineries, virus diseases interrupt grape maturation and almost certainly reduce overall wine quality. Many believe the 2010 Protocol material will solve the problems with the current system by providing reliable virus-free budwood. While the Protocol 2010 is undoubtedly a major advance, I believe that without additional changes to the certification program, those mother vines are at risk of becoming infected in increase blocks, and eventually we'll be facing the same systemic failures we have now. While certification protocols need to be fixed now, better certification alone is not the entire answer. Growers must be prepared to take additional steps to slow the spread of viruses in our vineyards. Neighboring vineyard owners and regional vineyard associations need to join together to slow or stop the spread of viruses by insect vectors in our neighborhoods and regions. We need to rogue virused vines from our vineyards annually, and to use traps, mating disruptors and sprays where appropriate to reduce mealybug populations and populations of insects that spread Red Blotch when those are identified and confirmed. Without growers banding together and taking additional steps, our vineyard investments are at risk."

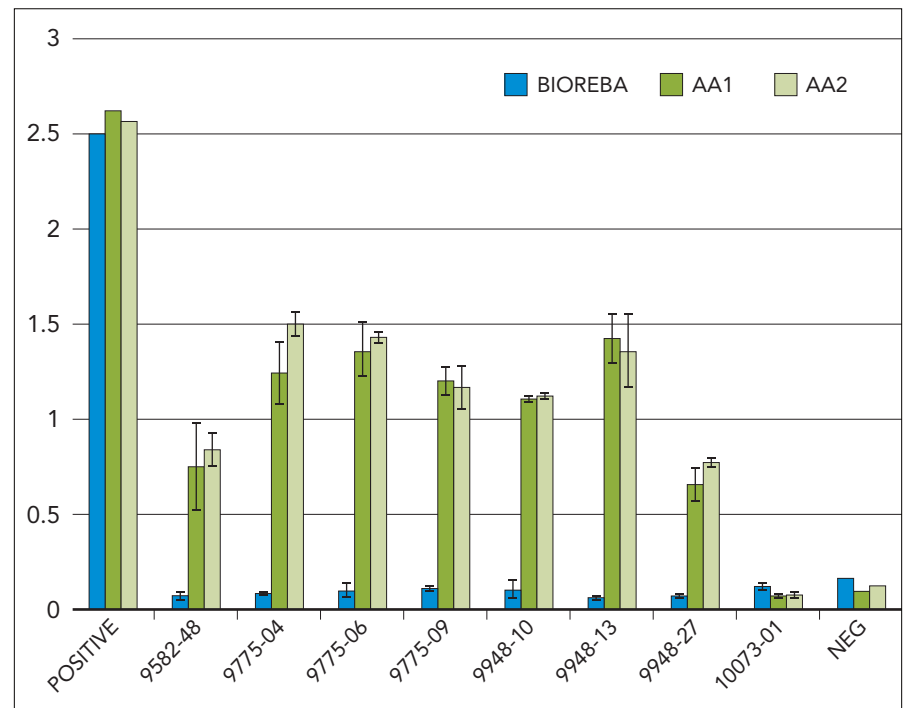
Tom Sinton, Starfield Vineyards



### Challenge and Opportunity

When growers purchase CDFA-certified stock, they assume that they are buying “clean” materials. But data gathered over the last 15 years indicate that this cannot be assumed<sup>1,6</sup>. It is unacceptable that countless vineyard managers and wineries have to face the financially crushing removal of young vineyards because of poor phytosanitary quality control. There is a clear gap between growers’ expectations and reality.

Protocol 2010 derived materials are becoming increasingly available from most nurseries. This offers a near-term fix to the crisis. However, in the short-term, classic increase blocks are still exposed to potential infection while newly established Protocol 2010 blocks will be exposed to the myriad of insect vectors and fungal pathogens that currently affect nursery stock and young and established vines. A robust and effective certification program is needed for the long-term well-being of our vineyards.



**FIGURE 3** Seven field LR3-positive samples consistently tested negative using the BIOREBA reagent, which is widely used in certification programs. A new detection reagent developed by Agri-Analysis is able to consistently detect all of them (AA1, AA2).

First of all, we believe that the effective certification of nursery stock requires a vigorous statistical approach to ensure results are statistically significant. The sampling strategies and statistics for grapevine testing are very complex while study on this topic is scarce. In-depth studies are required in order to develop a robust statistical model that regulators and growers can rely upon. In this field, our industry is lagging behind other commodity groups, such as the seed industry where rigorous sampling protocol exists.

Second, since LR3 is known to be genetically highly variable, certain strains may have escaped detection. “Such genetic variability has significant implication in the detection of LR3 by molecular means and serological assays,” said Dr. **Tefera Mekuria**, plant virologist, **Agri-Analysis**. Advances in new testing methods are needed to help address this issue. Funded by a USDA Small Business Innovative Research (SBIR) Grant, Agri-Analysis has recently developed a new ELISA-based reagent that provides a broader coverage of LR3 strains than the commercial reagent currently in use by most certification programs. Since fall 2013, Agri-Analysis has identified a number of LR3-positive samples from Napa and Sonoma vineyards that were negative, using the current commercial reagent. **FIGURE 3** is a set of data showing seven such samples first tested in December 2013 (AA1) and recently re-tested, using petiole samples (AA2).

**PHOTO 3.** Red Blotch symptoms in different vines in November 2013



## Comments from Foundation Plant Services, UC Davis

“Ensuring the freedom of our certified grapevine planting stock is an ongoing effort. I’ve been director of Foundation Plant Services (FPS) since 1994, which means I have seen the program change over the years as research provides us with both a better understanding of how clean grape nursery stock can become infected with virus and better detection techniques help us do a better job of eliminating damaging viruses from our certified stock. Although our knowledge is still imperfect and we continue to strive to improve the program, tremendous progress has been made over the last 20 years.

It is very frustrating for both growers and nurseries to find that Red Blotch virus is present in some certified nursery stock. This is a serious issue and one that requires a great deal of work on the part of nurseries to eliminate infected materials from their increase blocks. In the meantime, growers and nurseries have embarked on massive testing programs in an effort to determine which planting stock is infected with Red Blotch. This is expensive and difficult for all parties involved. We cannot really fully plan solutions to this problem until we find out how Red Blotch spreads and what vectors the virus. Research teams across the country are working on this question, and we all anxiously await more information.

The good news is that we are close to solutions. The Foundation collection at Davis is nearly free of the virus—we know now that this is because the Cabernet Franc woody index (which has been used for the program since the 1950s) detects Red Blotch virus as well as leafroll viruses. Our scientists have always known that there were ‘red leaf’ viruses we were not detecting with lab tests because every year there were Cabernet Franc woody index tests that were positive but samples of those vines were negative when tested by the FPS laboratory. We thought the ‘red leaf’

symptom might be caused by unknown leafroll types. Instead, in the fall of 2013, we were able to demonstrate that 100 percent of those ‘red leaf’ Cabernet Franc vines were positive when tested in the lab for the Red Blotch virus. So, without knowing the identity of the virus, FPS has been eliminating Red Blotch virus-infected vines as well as leafroll-infected vines from our program for many years.

Another advantage we have in solving the Red Blotch problem is **Russell Ranch Foundation Vineyard**. Funding from the **National Clean Plant Network** (USDA) allowed FPS to create the Russell Ranch vineyard, an isolated vineyard where all the vines have been through micro-shoot tip culture and passed a multitude of tests known as ‘Protocol 2010’ for the year the test panel was first developed. Red Blotch virus was added to the ‘Protocol 2010’ panel as soon as it was discovered. None of the vines in Russell Ranch have the virus.

Nurseries throughout the country are re-propagating new increase blocks with this Protocol 2010 Foundation material. And because we don’t know how Red Blotch spreads and because there have been some issues with leafroll viruses spreading into increase blocks, a large number of nurseries are planting these materials in isolated locations far from other vineyards to protect them from re-infection. Significant numbers of vines propagated from this material will be available to growers in upcoming years.

Producing quality grapevine nursery stock requires constant vigilance and dedication. It is important to realize that Red Blotch virus has likely been with us for many decades. Now that we have found the virus and developed accurate tests for it, we can begin the task of eliminating it from our planting stock and moving our vineyards to an even higher level of quality and productivity.”

Dr. Deborah Golino, director, UC Davis Foundation Plant Services

Could some strains of GLRaV-3 have escaped detection during certification? Dr. **Monica Cooper**, farm advisor, UC Cooperative Extension, has been studying the epidemiology of LR3 for a number of years. When asked for her opinion why the LR3 virus is found in certified materials, Dr. Cooper commented that “detection reagents could be one explanation. In 2010, I did work with a grower who had LR3(+) vines with clear symptoms that consistently tested negative.” Later, the research laboratory of Dr. **Rodrigo Almeida** at **UC Berkeley** was able to isolate a novel variant of LR3 from the samples<sup>7,8</sup>. “Anything we can do to improve the reagents will certainly make it easier to clean up our vineyards and nursery material over the long-term. I hope that the certification programs in California and other states are keeping updated on their virus testing methods and protocols,” said Dr. Cooper.

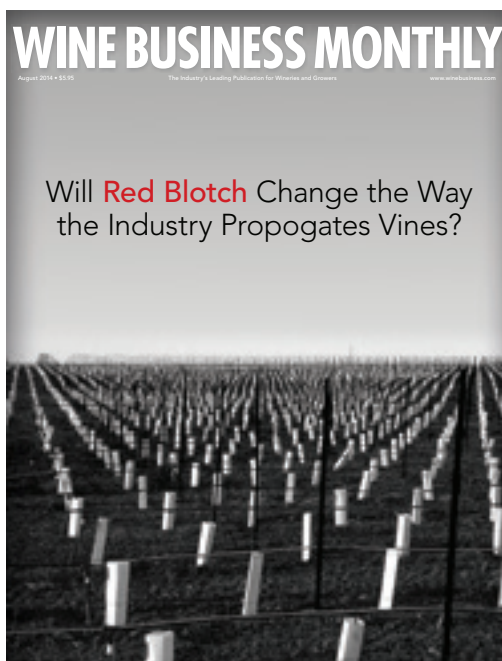
Equally important as testing reagents and sampling statistics are growers’ awareness and vigilance of potential virus problems. Extensive studies have shown that mealybugs can spread LR3 very quickly in field conditions, whether in increase blocks, nursery finishing rows or established vineyards. The recent decision by the CDFA/GWSS board to designate Red Blotch and mealybugs as pests is encouraging.

California’s grapevine nursery certification regulations are less stringent than those in other countries, such as Australia and Germany, and should be re-examined and updated. For example, CCR §3024.5 stipulates that “Primary and secondary increase blocks shall be tested by the Department for grapevine fanleaf virus, tomato ring spot virus, and leafroll associated viruses at least once every five years” and that “Certified nursery plantings may be tested for grapevine fanleaf virus, tomato ring spot virus, and grapevine leafroll associated viruses by the department.” However, there is no detailed stipulation as to: a) the number of samples to be tested; b) the level of confidence and statistical significance of the testing results required and the c) the maximum intolerable infection rate. By comparison, COMMISSION DIRECTIVE 2005/43/EC of the European Union requires that “the stock nurseries intend for the production of basic propagating material shall have been found free from the harmful organisms...based on the results of plant health tests referring to all plants. The failure rate of stock nurseries attributable to the harmful organisms... shall not exceed 5 percent.”

A high level committee of all stakeholders, including those making vines, certifying and planting them, should be established to examine the existing CDFA program. The authors believe that there has to be a multi-tiered approach to this challenge. For example, at the state level, the CDFA should conduct testing and inspection of increase blocks and field stock to reach a minimum level of cleanliness based on 95 percent free of infection with a 95 percent confidence level and 5 percent margin of error. Technically, this should be relatively easy to accomplish and should not be objectionable to most stakeholders. Additional stringency could be introduced at the county level with growers adding further stringency as deemed necessary. This multi-tiered approach is widely practiced in Europe where the European Union sets the minimum phytosanitary inspection standard. Each country can raise the EU standard as deemed necessary. Similarly, regions within a country may further raise the national standard but not lower it<sup>9</sup>. **WBM**

## References

1. Stamp and Wei, 2013. The Impact of Grapevine Red Blotch Virus. *Wine Business Monthly*. March 2013 pp. 56-67.
2. Rhonda J. Smith, viticulture farm advisor, University of California Cooperative Extension, personal communication. Funded by AVF.
3. “FPS Completes Second Round of Red Blotch Testing,” August 30, 2013, [http://www.winebusiness.com/news/?go=getArticle&cms\\_preview=true&dataid=121164](http://www.winebusiness.com/news/?go=getArticle&cms_preview=true&dataid=121164).
4. Adib Rhowani, Plant Pathologist, FPS, UC Davis, personal communication.
5. “Sampling Strategies and Statistics” by Stamp Associates, <http://www.jamesstamp.net/tissuesampling.html> and *Agri-Analysis*, <http://www.agri-analysis.com/index.php?literature.html>.
6. Stamp (2010). Health status of California grapevine planting material. *Wine Business Monthly*. August 2010, pp. 32-37.
7. Almeida RP, Daane KM, Bell VA, Blaisdell GK, Cooper ML, Herrbach E, Pietersen G. “Ecology and Management of Grapevine Leafroll Disease.” *Front Microbiol.* 4:94 (2013).
8. Maree HJ, Almeida RP, Bester R, Chooi KM, Cohen D, Dolja VV, Fuchs MF, Golino DA, Jooste AE, Martelli GP, Naidu RA, Rowhani A, Saldarelli P, Burger JT. “Grapevine leafroll-associated virus 3,” *Front Microbiol.* 4:82 (2013).
9. Dr. Joachim Schmid and Dr. Frank Manty, Hochschule Geisenheim University, Germany, personal communication.



This article first appeared in the August 2014 issue of Wine Business Monthly. Reprinted with permission.

