



SLOTDRAIN[®]

**SMART. SLEEK.
SAFE. SANITARY.**

PRODUCT CATALOGUE

ABOUT SLOT DRAIN®

Before Slot Drain®, grating, trench drains and four-sloped floors were the standards. Slot Drain® changed surface drainage forever by providing the first pre-sloped, prefabricated drain system.

— Slot Drain® is a one-piece, built-in, sloped, open floor drain/surface drain system that is comparable in price yet superior in many ways.

The linear slot eliminates traditional grates that can be weak, trap bacteria and are difficult to clean, making Slot Drain® the most durable, sanitary and cost-effective drainage system available. It's applicable wherever floor or ground surfaces are subject to fluids, or have frequent cleaning requirements.

Most Slot Drain® applications are slab on grade, but it can also work in structural slabs and hollow core slabs. Slot Drain® replaces grated trench drains, with a self-cleaning system at a significantly reduced cost.

Slot Drain® was patented in 1988 and was the first floor drain on the market in North America to utilize the innovative prefabricated, pre-sloped and slotted concept, reducing construction labour costs. Since then, it has been installed successfully in hundreds of applications, satisfying customers and construction professionals alike.

Four-sloped floors, or contoured floors, are replaced with effective, low maintenance and low cost, two-sloped floors. Gone are the metal gratings and metal covers that are a nuisance to remove and clean.

Slot Drain® is available in stainless steel, fiberglass and galvanized steel, with T-Sections, 90° and 45° elbows to go around corners and other obstacles.

Without grating, Slot Drain® is perfect for high traffic and heavy traffic areas and processing facilities with frequent cleaning and inspection requirements.

Slot Drain® is made to suit your special requirements. Adaptations have been made to Slot Drain® to accommodate specific depth or flow requirements, drain lengths and handling of process water. Slot Drain® is available to be shipped worldwide and arrives fully assembled, ready to be installed.

FOOD PRODUCTION, STORAGE & DISTRIBUTION

— THE CLEANER, THE BETTER

Save money, save time, reduce risk.

On the modern food production floor, cleanliness is a bottom-line consideration. Compromised product creates immediate losses and costs and carries long-term risks. Conventional surface drainage, like grates and trenches, create an environment where bacteria can fester. For food processing, Slot Drain® is the most durable, sanitary and cost-effective drainage system available.

SLOT DRAIN® FEATURES AND BENEFITS



SANITARY



EASY TO CLEAN



CORROSION
RESISTANT



HANDLES EXTREME
TEMPERATURE



LOAD CLASS
RATED



CONTROLS
ODOUR

TYPE OF APPLICATIONS



— Dairy Farms



— Slaughterhouses

SUITABLE SLOT DRAIN® SERIES



STAINLESS
STEEL



10,000
SERIES



6000
SERIES



— Processing Plants



— Supermarkets / Delis


INDUSTRIAL & MANUFACTURING

— STRONG AND SAFE


Eliminate weak spots and get on with the work at hand.

Safety is at stake in heavy industry, so weakness can't be tolerated. With narrow slots made of stainless steel, Slot Drain® stands up to extreme weight. Forklift drivers never have to worry about a weak floor grate in an awkward location. Two floor slopes instead of four help keep equipment more stable. And you never have to pull up heavy grates to clean below.

SLOT DRAIN® FEATURES AND BENEFITS



DURABLE



LOAD CLASS RATED



EASY TO CLEAN

TYPE OF APPLICATIONS



— Ports & Docks



— Distribution Centres

SUITABLE SLOT DRAIN® SERIES



STAINLESS STEEL



GALVANIZED STEEL



10,000 SERIES



6000 SERIES



— Cold Storage



— Warehouses

BRICK & TILE / LANDSCAPE & POOL

— INFINITE POSSIBILITIES

Start with tremendous functionality, then let your imagination take you to new places.

Landscapes and pools meet our basic needs to interact with land and water. Explore new possibilities today to create spaces that people will love for generations. Slot Drain's® aesthetic is clean and its functionality is even cleaner. Build beauty into your plans from the ground up.

SLOT DRAIN® FEATURES AND BENEFITS



AESTHETICALLY APPEALING



EASY TO CLEAN



CONTROLS ODOUR



CORROSION RESISTANT

SUITABLE SLOT DRAIN® SERIES



STAINLESS STEEL



7000 SERIES



6000 SERIES

TYPE OF APPLICATIONS



— Patios



— Plazas & Parks



— Swimming Pools



— Playgrounds

SLOT DRAIN® SERIES



NSF/ANSI/3A 14159-1

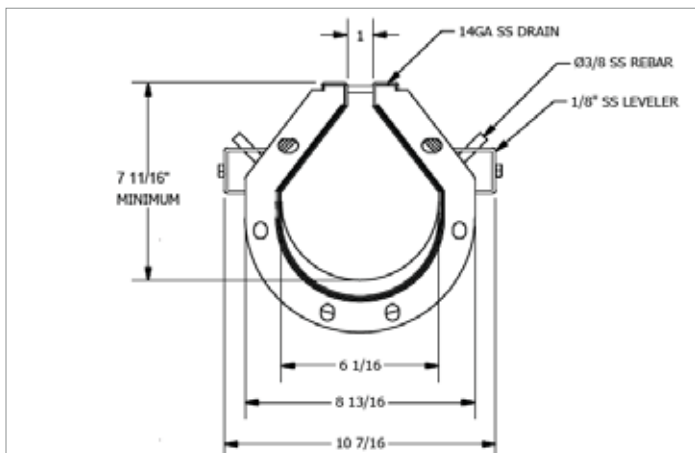


10,000 SERIES SLOT DRAIN®

The 10,000 Series Slot Drain® is our newest, easy-to-clean product. Designed for the highest-regulated food processing facilities, this heavy duty load-bearing drainage system offers our smoothest design ever for complete drainage sanitation. This drain is made of T304 or T316 stainless steel.

— Applications:

Food and Beverage Facilities, Wineries and Breweries, Agriculture and Animal Facilities, Extreme Temperature, Heavy Load (Fork-Lift), and Harsh Chemical Environments

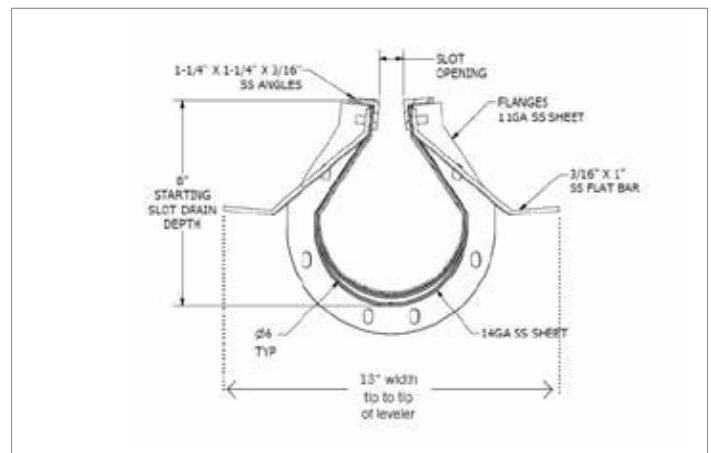


9000 SERIES SLOT DRAIN®

The 9000 Series Slot Drain® Slotted Trench Drain bodies can be made of fiber reinforced fiberglass, stainless steel, or galvanized steel. All models feature interlocking ends and a radiused bottom. The exposed surface angles on fiberglass and galvanized models are manufactured from T304 Stainless steel. Inverts start at 5.5 inches deep. It has mechanically-locking joints and bolt-together flanges.

— Applications:

Automotive Facilities, Car Washes, Parkades, Warehouse Facilities, Heavy Load (Fork-Lift) Rated



SLOT DRAIN® SERIES



NSF/ANSI/3A 14159-1



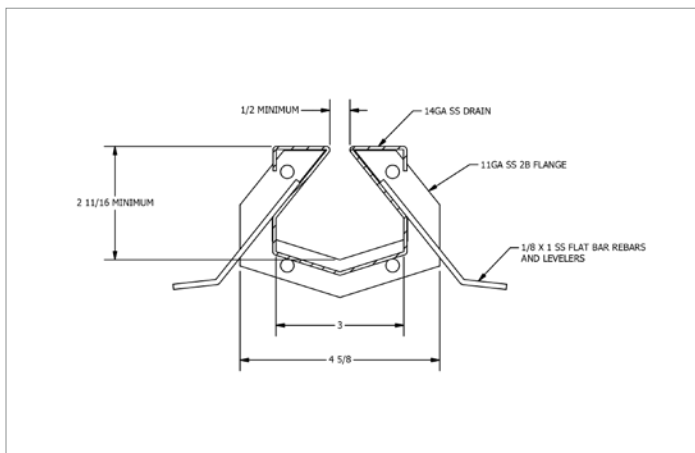
NSF/ANSI/CAN 50

6000 / 6000 PLUS-R SERIES SLOT DRAIN®

6000 Series Slot Drain® is a cost effective surface drainage system that is available in stainless or galvanized steel. Inverts start at 2³/₄". It is applied often in pedestrian or light traffic areas, such as swimming pools, garages, distribution centers, or facilities that do not have a high volume of liquid to distribute. The 6000 Plus-R model is also available for heavy load rated and hygienic environments.

— Applications:

Shallow Depth, Low-volume Water Distribution Areas, Swimming Pools, Garage, Distribution Centers

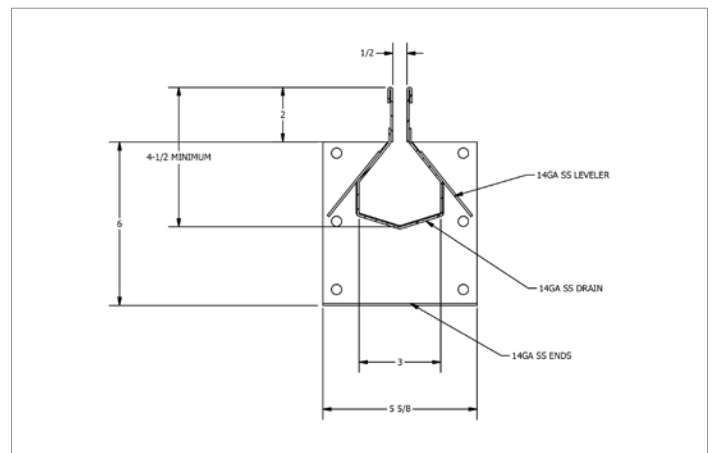


7000 SERIES SLOT DRAIN®

7000 Series Slot Drain® is available in T304 or T316 stainless steel, fiberglass and galvanized steel. Its sleek, linear and aesthetic design perfectly matches landscaping pavement. It can be applied in areas like patios, gardens, sidewalks and plazas. With paving bricks on top, Landscape Slot Drain® can distribute storm water quickly and it is ideal for public areas as it can be ADA Compliant.

— Applications:

Plaza, Sidewalk, Playgrounds, Indoor/Outdoor Use

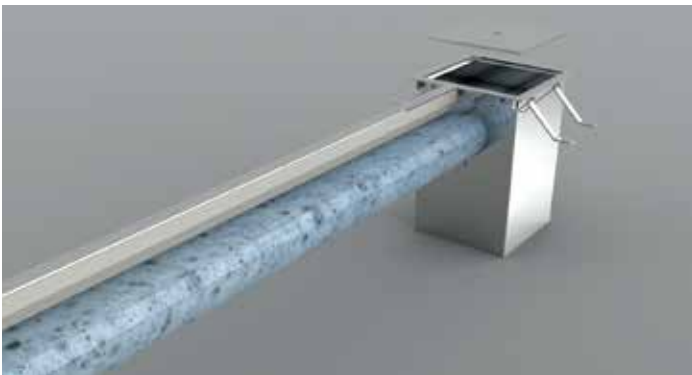


CLEANING TOOLS

— EASY TO CLEAN

Each Slot Drain[®] system includes a specially designed cleaning kit specific to its application.

To clean the drain channel, cleaning kit options include an easy cleaning paddle, Flush Flo[™] System for frequent cleaning facilities.



CLEAN IN PLACE (CIP)

CIP is a method of cleaning that is commonly used in hygiene critical industries, such as food and beverage processing, dairy, brewing, pharmaceutical and cosmetics.

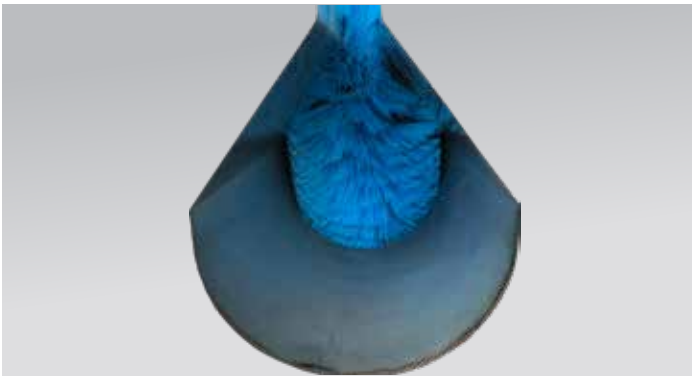
Slot Drain[®] does not have gratings of any kind, which makes CIP much easier. It is ideal for facilities that requires frequent cleaning and sanitation.



FREQUENT CLEANING — FLUSH FLO[™]

This system is connected to a water line and can be operated with a timer or flushed manually. You can open a valve to let water flush and clean the drain or set a timer to clean the drain automatically.

Flush Flo[™] is especially suitable for facilities that require frequent cleaning, such as food processing plants, car washes, seafood markets, etc.



REGULAR CLEANING — CLEANING PADDLE & BRUSH

The cleaning paddle is the simplest way for regular drainage cleaning. You just insert the paddle, twist 90 degrees and move it along the drain to clear the debris.

The cleaning brush brush can scrub the inside of the channel easily and thoroughly. Trappings are then removed from the catch basin.

The only part of Slot Drain® that is exposed to the room is the stainless steel surface which can be cleaned and sanitized as your floor is.

Slot Drain® does not absorb water or contaminants and allows contaminants to be disposed of in an environmentally friendly manner.



STRAINER BASKET

The strainer basket's 1/4-inch perforated holes trap stones, keys, rings and other items that are smaller than the slot opening, that you want to intercept. Made of stainless steel, it is designed to last for the life of your system.

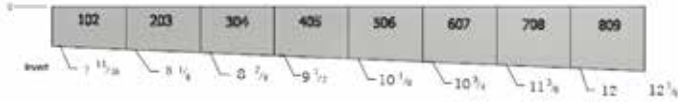


CATCH BASIN

Catch basins are designed for retrieving debris and any items that may inadvertently fall into the slot. A 1/4 T304 stainless lid sits atop the base. Basins come in 6"x6", 6"x12", 8"x8", 12"x12" or 24"x24" wide, with standard depths of 12" and 20". The basins come with a reinforced cover made of T304 stainless steel with rebar tie-ins and can withstand heavy traffic loads.

SPECIFICATIONS — SLOT DRAIN® PROFILES

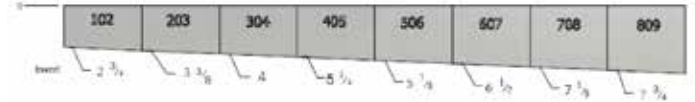
Actual length of each section = 9'8" or 4'10"



10,000 SERIES SLOT DRAIN® SECTION	INVERT SHALLOW	INVERT DEEP
102	7 11/16	8 1/4
203	8 1/4	8 7/8
304	8 7/8	9 1/2
405	9 1/2	10 1/8
506	10 1/8	10 3/4
607	10 3/4	11 3/8
708	11 3/8	12
809	12	12 5/8

- Standard drain channels are 9'8" or 4'10" long, 6" wide and are available in 1/2", 1" and 1 1/4" wide throat openings.
- Drain bodies are either made of T304 or T316 Stainless Steel or galvanized sheet, both with stainless steel interlocking ends and a radiused bottom.
- The surfacing areas and drain frame are made from T304 Stainless steel.
- Drain channels are built with a .5% built-in slope and inverts start at 8 inches and continue to unlimited lengths. End caps and catch basins complement the channels. End outlets, bottom outlets and side outlets are available in 2", 3", 4" and 6" diameters.
- Inserts for flushing are optional items.

Actual length of each section = 9'8" or 4'10"



6,000 SERIES SLOT DRAIN® SECTION	INVERT SHALLOW	INVERT DEEP
102	2 3/4	3 3/8
203	3 3/8	4
304	4	4 5/8
405	4 5/8	5 1/4
506	5 1/4	5 7/8
607	5 7/8	6 1/2
708	6 1/2	7 1/8
809	7 1/8	7 3/4

- Standard drain channels are 9'8" or 4'10" long, 3" wide and are available in 1/2", 1" and 1 1/4" wide throat openings.
- Drain bodies are either made of T304 or T316 Stainless Steel or galvanized sheet, both with stainless steel interlocking ends and a radiused bottom.
- The surfacing areas and drain frame are made from T304 Stainless steel.
- Drain channels are built with a .5% built-in slope and inverts start at 5.5 inches and continue to unlimited lengths. End caps and catch basins complement the channels. End outlets, bottom outlets, and side outlets are available in 2", 3", 4" and 6" diameters.
- Inserts for flushing are optional items.

RETROFIT



Slot Drain Systems arrives at the site in fully assembled sections and is ready to be installed.

- 1) Layout and mark drain location on existing slab.
- 2) Cut 24" wide trench in existing slab.
- 3) Excavate the trench allowing for room underneath and on both sides of Slot Drain®. There should be a minimum of 6" of concrete surrounding the drain.
- 4) Drill and dowel into the sides of the existing cut slab. Approximately 16"–24" on both sides.
- 5) It is recommended to pre-pour a concrete pad underneath the Slot Drain pit so it can be properly secured. If no pad is poured, peg the sump pit down (using the flat bar mounting brackets bolted to the sides of the sump and wooden stakes) before Slot Drain® is connected.
- 6) Install all Slot Drain® pits and piping, making sure that the Slot Drain pit walls are reinforced to prevent sidewall bowing.
- 7) Bolt the last (deepest) section of Slot Drain® to the Slot Drain® pit. If a Slot Drain® pit is not being used, start at the deepest section. Bolt all remaining sections of Slot Drain® together using the numbered flanges as a guide. For example, if you have a section 102, a section 203, a section 304 and a Slot Drain pit.
 - 8) Use wooden stakes to set the desired elevation of drain sections. Secure drain sections to the stakes with the mounting holes provided on the leveling brackets.
 - 9) Once Slot Drain® is secured and the appropriate elevation is achieved, for structural support, tie the rebar from the dowels and floor grid into the rebar/leveling bars on the drain assembly. Cover the opening with the duct tape, or insert Styrofoam if needed.
 - 10) To ensure that Slot Drain® will not float, it is recommended that the concrete be poured in two stages. Once adequate time for the first concrete pour to set has elapsed, the floor slab can be completed. The use of a pencil vibrator is strongly recommended to make sure that the concrete has completely surrounded Slot Drain®, leaving no bubbles or voids.
 - 11) Once the concrete slab is firm, first remove the tape or Styrofoam from the slot and then break out all metal tabs to ensure a continuous open slot. Using the paddle, clean out the Slot Drain®.



SLOT DRAIN®

— Send us your plans
or let us assist you with
your designs.

CONTACT US

To order Slot Drain®, please contact

TF 855 · 497 · 7508

F 204 · 202 · 6275

E info@slotdrainsystems.com

W slotdrainsystems.com