



**FTSYSTEM**

INSPECTION FOR QUALITY

CAPPING



# Cap Control

CT/TA/CF Series [ SE ]

Ideal to ensure the presence of the closures and the conformity with the quality standards.

Different technologies for the cap/closure check. The basic cap inspection system is available in



## STANDARD INSPECTION

[depending on configurations]

- ✓ CAP PRESENCE
- ✓ HIGH CAP
- ✓ COCKED CAP
- ✓ FOIL PRESENCE
- ✓ METALLIC CLOSURES PRESENCE
- ✓ COLOR OF THE CAP/CAPSULE/CLOSURE

## FEATURES

- ✓ Optical sensors technology
- ✓ Shape verification and basic inspection performed with smart camera
- ✓ No change to the existing line for installation
- ✓ Independent structure for eliminating noise and vibration and ensuring maximum accuracy and minimum maintenance

## ADVANTAGES

- ✓ IMPROVE PRODUCTIVITY
  - Reduction of the number of rejects in case of malfunctioning of the capper
  - through the control on consecutive rejects
- ✓ IMPROVE QUALITY
  - Eliminate customer complaints related to product leak due to incorrect capping
  - Guarantee of correct cap color and model to ensure the product's image
  - Ensure product quality

## TYPE OF CONTAINER

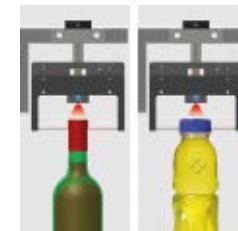
- ✓ All types of caps  
(In association with the correct system configuration)



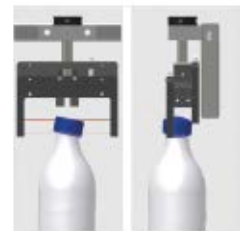
700 Series HMI  
[Advanced model]



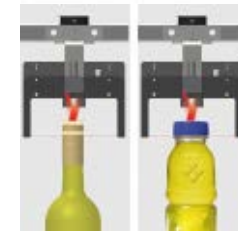
600 Series HMI  
[Basical model]



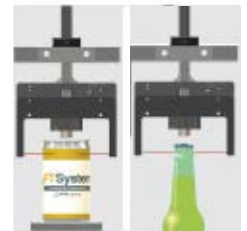
Cap presence ctrl



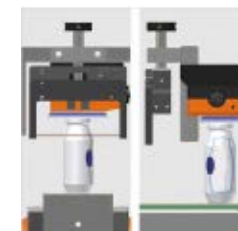
High /Cocked cap ctrl



Chromatic ctrl



Metal closure detection



Foil presence detection

Ideal to ensure the quality and the conformity of capping.  
 It prevent market claims due to incorrect closure of filled containers, distribution of products not intact, for example bottles not properly sealed, breakage of the security ring or non-compliant/incorrect printed logo on cap, etc.

# Cap Inspection



IT700-LoT Series [ VA ]

The total cap inspection system is available in different configurations selected according to the specific inspection to be performed and the degree of precision



## STANDARD INSPECTION

[depending on configurations]

- ✓ CAP PRESENCE
- ✓ PRODUCT COMPLIANCE
- ✓ CAP INTEGRITY
- ✓ CAP POSITIONING
- ✓ SECURITY RING INTEGRITY
- ✓ BRAND INTEGRITY AND CORRESPONDENCE [DEDICATED OPTIONAL CAMERA]

## FEATURES

- ✓ Machine vision technology
- ✓ Configurable with 1, 2 or 4 cameras
- ✓ Specific lighting for maximum visibility of defects
- ✓ No change to the existing line for installation
- ✓ Independent structure for eliminating noise and vibration, ensuring maximum accuracy and minimum maintenance
- ✓ Designed to be integrated with additional inspections
  - Level control
  - Label presence
  - Brand inspection
  - Codes control/inspection
  - Monitoring

## ADVANTAGES

- ✓ IMPROVE PRODUCTIVITY
  - Reduction of the number of rejects in case of malfunctioning of the capper through the control on consecutive rejects
- ✓ IMPROVE QUALITY
  - Eliminate customer complaints related to product leak due to incorrect capping
  - Guarantee of correct cap color and model to ensure the product's image
  - Ensure product quality

## TYPE OF CONTAINER

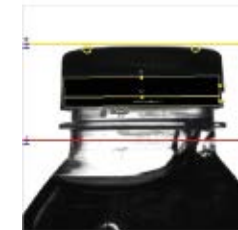
- ✓ All types of caps  
 (In association with the correct system configuration)



Simple and intuitive interface



Statistics/Results clear and understandable



Example with Flat cap



Principle - System with 2 cameras



Example with ROPP cap or similar



Principle - System with 1 camera





# FTSYSTEM

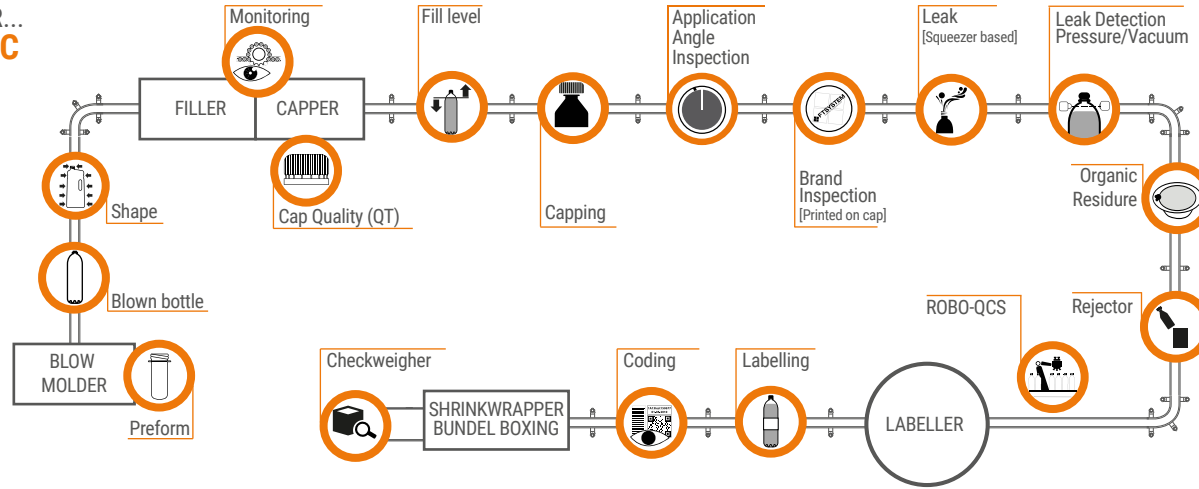
INSPECTION FOR QUALITY

## CHOOSE YOUR SOLUTION

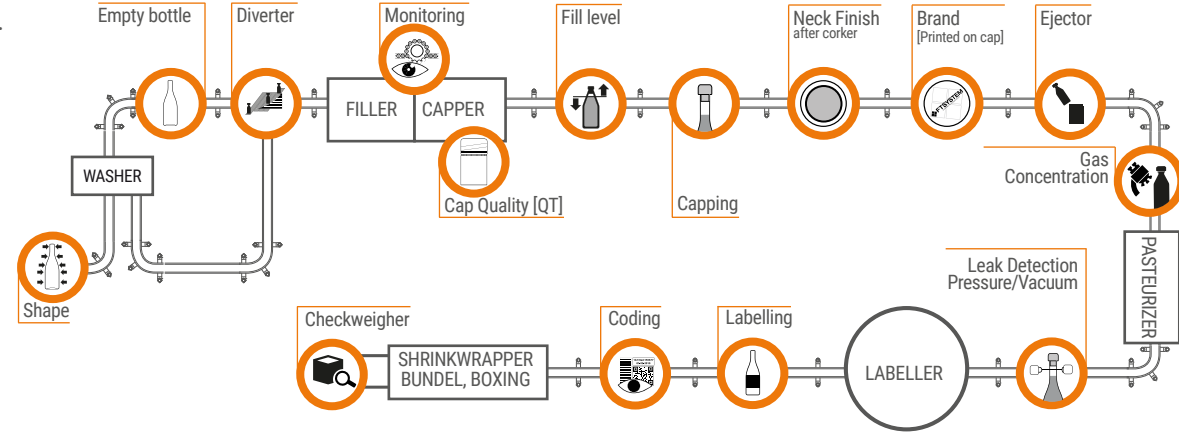
FT SYSTEM HAS A COMPLETE RANGE OF INSPECTION AND TRACKING SYSTEMS

in order to ensure the high quality of your product allowing the optimization of your production reducing costs

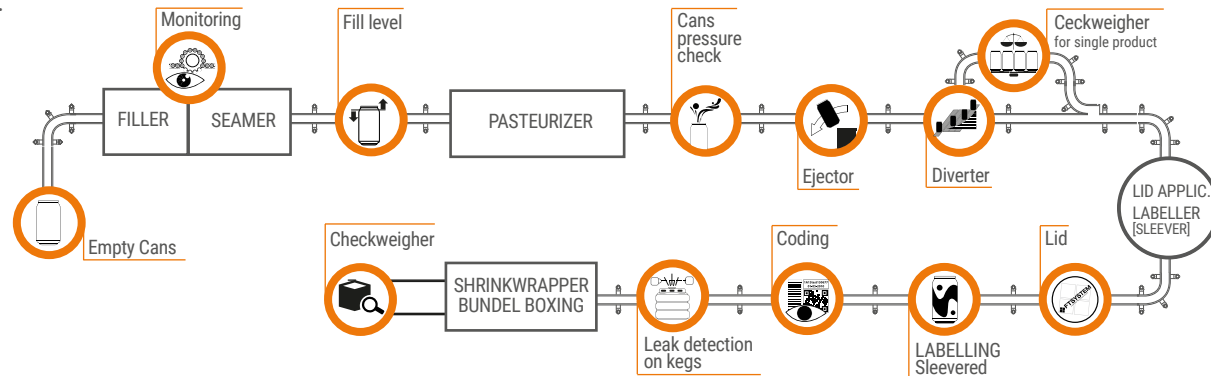
### FOR YOUR... PLASTIC LINE



### FOR YOUR... GLASS LINE



### FOR YOUR... CANS LINE



### FOR YOUR... LABORATORY NON-DESTRUCTIVE ANALYZERS

EVO-C02  
Total pressure  
CO2 Partial  
pressure  
CO2 dissolved

EVO-O2  
O2 concentration  
[NON pressurized  
products]

EVO-TRACE  
Very low  
concentration  
of CO2

EVO-N2  
Total Pressure  
[Nitrogen dosed  
products]

EVO-V  
Vacuum level  
[Hot-filled and  
pasteurized  
products]

EVO-P  
O2 concentration  
CO2 concentration  
[Bags & Trays]



**FT SYSTEM**  
**HEADQUARTER**  
 Via L. Da Vinci, 117  
 29010 Alseno (PC) - ITALY  
 +  
**LPRO**  
**Laser Spectroscopy division**  
 Via Torino 1/L  
 35035 - MESTRINO (PD) - ITALY

**ANTARES VISION**  
**HEADQUARTER**  
 Via del Ferro, 16  
 25039 Travagliato (BS) - ITALY

**19 COMPANY SITES**

- ♥ ITALY
- ♥ FRANCE
- ♥ SPAIN
- ♥ UK
- ♥ IRELAND
- ♥ GERMANY
- ♥ RUSSIA
- ♥ USA, CANADA
- ♥ MEXICO, LATAM
- ♥ BRAZIL, LATAM
- ♥ INDIA
- ♥ CHINA
- ♥ SOUTH KOREA
- ♥ ASIA PACIFIC

30+ LOCAL PARTNERS  
 60+ COUNTRIES SERVED  
 + R&D SITES

**Stay updated**  
 Follow us on our social media  
 to discover all the solutions for  
 your quality control and  
 line efficiency needs.

