

BOTTLING AND PACKAGING TECHNOLOGIES

for the wine



CONTENT



1

1. KEY HIGHLIGHTS

Della Toffola Group at glance



2

2. MACHINE RANGE AND MODELS

Different bottling and packaging product gamma:

- Linebloc
- Linebloc RT



3

3. FILLING VALVES

- Still wine matrix with focus on G EVO
- Still and sparkling wine matrix with focus on ISO EP-V-ARL



4

4. MACHINE CHANGEOVER

- Bottle Changeover
- Product Changeover



5

5. FURTHER TECHNICAL FEATURES

- Basement
- Machin protection and top cover

KEY HIGHLIGHTS

Della Toffola Group is a world leader in the design and construction of technologically advanced solutions for every step in the winemaking process.

8

PRODUCTIVE
UNITS

8

BRANCH
OFFICES

600

EMPLOYEES

80%

EXPORT

190.000

SQ M

140M €

TURNOVER





MACHINE RANGE AND MODELS

LINEBLOC

- Linear machine design suitable for future turrets implementation and easy bypass of capping turrets
- Bottles transferring through screws for higher stability and control
- Protections integrated with the machine table
- From 12 to 36 filling valves



LINEBLOC RT

- Each turret is installed on a standalone «**roof**» **table** completely made in stainless steel
- **Electronic synchronization** of the turrets through servo motors
- **Perimetral protection** for easier access
- Production speed up to 15000 bottles per hour





FILLING VALVES

STILL WINE

	Still wines	Sparkling wines	CIP	Bottle flushing with nitrogen before filling	Automatic filling level regulation
GRAVITY (G)	✓	✗	✓	✗	✗
GRAVITY (G RL)	✓	✗	✓	✗	✓
GRAVITY EVO (G EVO)	✓	✗	✓	✓	✗
GRAVITY EVO RL (G EVO RL)	✓	✗	✓	✓	✓



FILLING VALVES

FOCUS ON G EVO

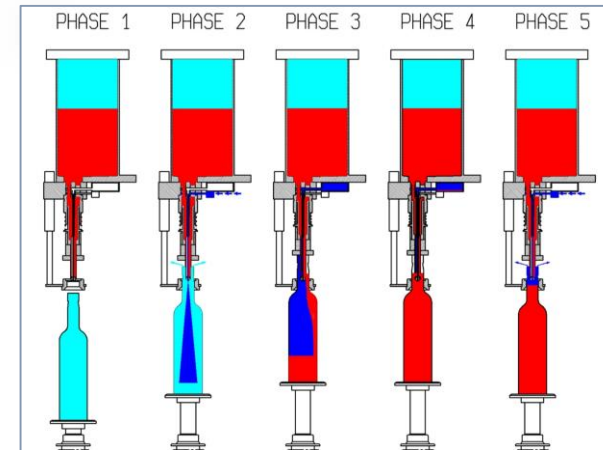
This filling system is **dedicated to the producers who want to reduce at minimum the risk of product oxidation** during the filling process.

In fact, the system allows the flushing of the internal part of the bottle with inert gas, reducing at minimum the presence of oxygen at the moment the filling starts.

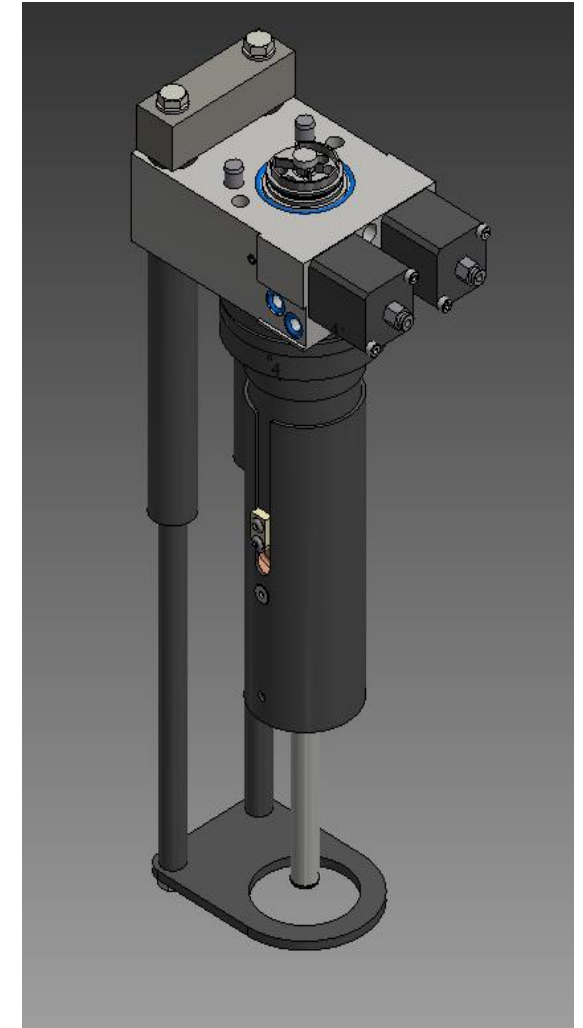
The return of product is conveyed in a dedicated channel and recovered in a small tank next to the machine.

The recovery tank as well is under slightly pressure of inert gas.

Furthermore, once the filling is done, an additional flushing of inert gas saturates the head space before capping.



PHASE 1	BOTTLES CENTERING
PHASE 2	N2 GAS FLUSHING
PHASE 3	FILLING & GAS/AIR EVACUATION
PHASE 4	LEVELLING
PHASE 5	N2 HEAD SPACE SATURATION





FILLING VALVES

SPARKLING AND STILL WINES

	Still and sparkling wines	CIP	Pre - Evacuation and self levelling	Adjustment of filling parameters from HMI	Possibility to store filling recipes on plc	Automatic filling level regulation
MECHANICAL ISO (ISO M-V-A)	✓	✓	✓	✗	✗	✗
ELECTRO PNEUMATIC ISO (ISO EP-V-A)	✓	✓	✓	✓	✓	✗
ELECTRO PNEUMATIC ISO RL (ISO EP-V-A RL)	✓	✓	✓	✓	✓	✓



FILLING VALVES

FOCUS ON ISO EP-V-A RL

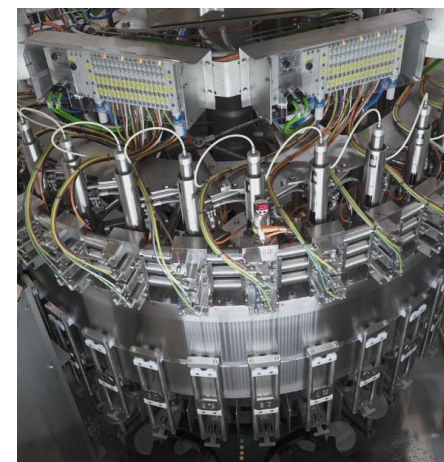
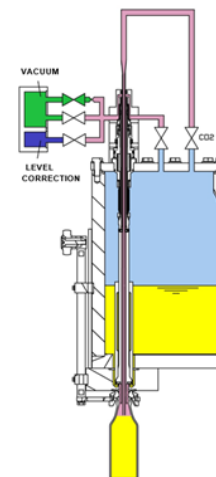
This is the **latest and advanced filling technology** produced by Ave.

The filling system is suitable for still and sparkling products and **especially for producers and bottlers handling a significant variety of products with different composition and characteristics.**

The electropneumatic system proposed by Ave has the possibility to adjust every filling parameter creating dedicated recipes for each product being filled, with the possibility of storing them in the PLC.

The parameters adjustment can be done in real time during machine production.

The RL version is equipped with the automatic regulation of the filling level reducing significantly the time necessary for the changeover.



Filler Valve setup 1 - 9								
	Total recipe time: 7.00				Time remaining available at 3500 bph: 18.5			
Time/step (sec)	0.10	0.20	0.50	6.00	0.20	0.00	0.00	0.00
Vent tube up	█	█						
Product Valve			█	█				
Bypass								
Draining								
Pressurization		█	█					
Autolevel								
Preevacuation	█							
Snift								





MACHINE CHANGEOVER

BOTTLE CHANGEOVER

ADJUSTABLE STARS

The adjustable stars are handling a bottles diameter range from 50mm to 110mm.

UNIVERSAL SCREWS

Each set of universal screws is handling a bottles diameter range of 20mm



AUTOMATIC FILLING LEVEL REGULATION

The filling level is adjusted automatically according to the recipe selected by the operator from the HMI

AUTOMATIC HEIGHT ADJUSTMENT REGULATION

Each turret set the correct position according to the recipe selected by the operator from the HMI



QUICK RELEASE

The bottle change over does not require tools





MACHINE CHANGEOVER

PRODUCT CHANGEOVER

AUTOMATIC PLACING RECOVERY AND RINSING TRAY

This system is ideal for producers looking for reducing at minimum the product changeover time.

Different functions:

WINE RECOVERY

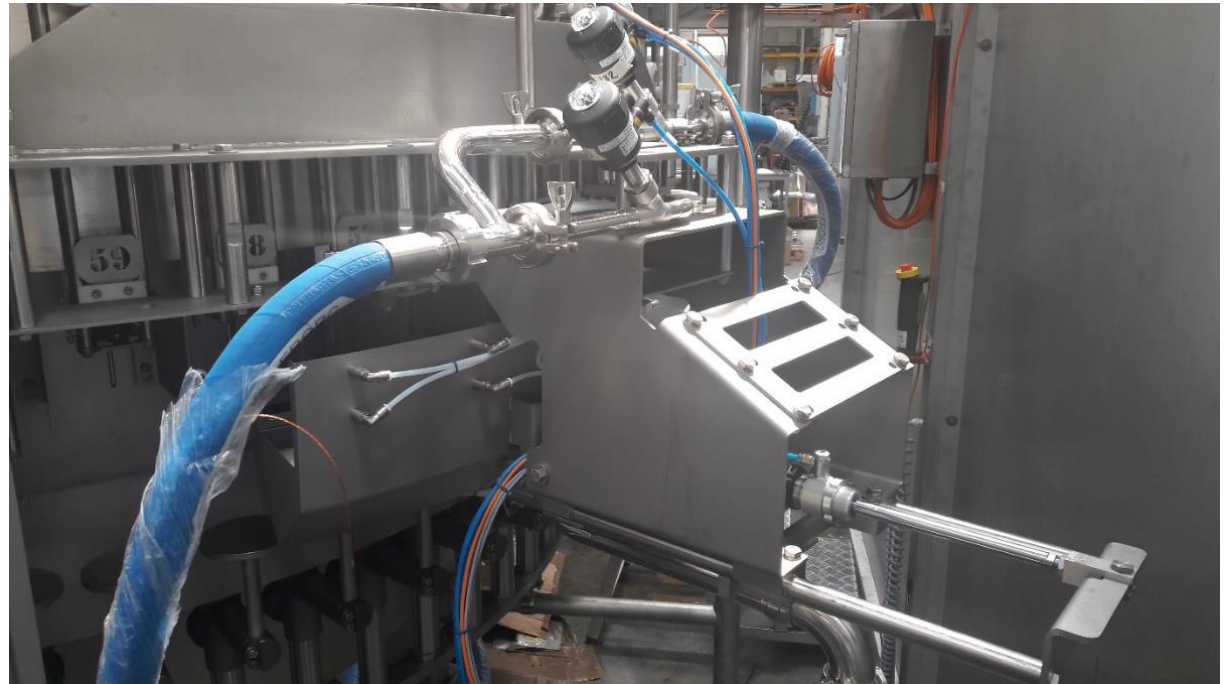
at the end of the production slot in order to minimize the wastage

QUICK RINSING

of the external part of the filling valves and vent tube

FILLER PREPARATION

at the time of the product changeover or following the CIP of the machine making sure that no liquid residuals are remaining in the filling nozzles





FURTHER TECHNICAL FEATURES

BASEMENT

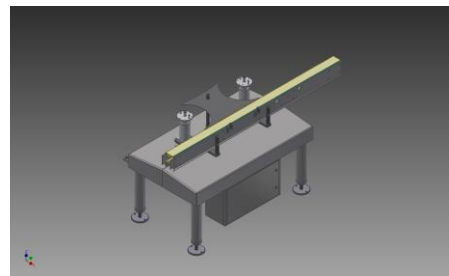
RT TABLE

The «Roof type» table is completely made in stainless steel.

The geometry ensures an **improved draining of liquids and sliding of solids** on the floor maintaining an higher cleanliness level during production.

The RT table is **available also for small size machine in one single table configuration.**

From 40 filling valves each turret is installed on a dedicated standalone roof type table.



▲ RT Standalone single roof table

◀ RT table

MACHINE PROTECTIONS AND TOP COVER

STANDARD PROTECTION

Protection integrated on the machine frame and table. Electronically interlocked and made in stainless steel and lexan panels available in glass panels upon request.

PERIMETRAL PROTECTION

Standalone protection, all around the machine ensuring an improved access to the machine turrets and main components. Electronically interlocked. Made in stainless steel and glass panels.

UPPER PROTECTION *(Upon request)*

It is possible to **integrate the main protection with the upper part** ensuring a safer working environment. Made in stainless steel and lexan panel. Possibility to install HEPA filters.



◀ Perimetral Protection

Standard Protection ▶



THANK YOU

For further information please visit:
www.dellatoffola.us

