



PUMP SELECTION GUIDE



INOXPA PUMP GUIDE

GENERAL APPLICATION

KSF - Progressive Cavity Pump

- Excellent gentle handling of wine grapes and must
- Efficient design that can pump long distances

RVN - Helicoidal Impeller Pump (Pumpovers)

- Best-in-class for pumpovers due to helicoidal design
- Gentle handling of product
- No clogging

Hyginex SEN - Centrifugal Pump

- Sanitary and economical design is highly efficient
- Value priced all around winery pump

APPLICATION SPECIFIC

HCP/HCPN - Centrifugal Pump

- Designed for high volume liquid transfers
- High speeds and efficient throughput
- Tank CIP

RF - Flexible Impeller Pump

- Excellent value
- Reversible direction
- Machined head for high efficiency
- Easy maintenance

TLS - Rotary Lobe Pump

- Most common all-purpose pump design for wineries
- Durable and compact design
- Sanitize with hot water up to 248°F

✓ Highly Recommended

	Must	Thick Liquids	Thin Liquids	Pumpover	Tank Transfer	Filtration
KSF - Progressive Cavity	✓	✓	✓			
RVN - Helicoidal				✓		
SEN - Centrifugal			✓		✓	✓
HCP - Centrifugal			✓		✓	✓
RF - Flexible Impeller			✓		✓	✓
TLS - Rotary Lobe			✓	✓	✓	✓

Last updated: 01/19/2021

INOXPA KSF PROGRESSIVE CAVITY PUMP WITH CART

Overview

The Inoxpa KSF is a positive displacement progressive cavity pump capable of handling various applications in the wine industry. This robust, yet simple design is one of the most popular within the industry worldwide due to its gentle handling of product, self-priming design and efficient use in pumping long distances. This pump on a cart with a VFD is a great alternative to the classic Rotary Lobe design.



Key Features

- Excellent handling of wine, grapes and must
- Efficient design that can pump long distances
- True self-priming pump
- Reversible

MODEL	MAX FLOW RATE (GPM)	MAX PRESSURE	CONNECTIONS	PRICE
KSF-30 with pump & VFD	5-20 GPM	87 PSI (6 BAR)	2" TC	\$7,600
KSF-50 with pump & VFD	5-70 GPM	87 PSI (6 BAR)	3" TC	\$9,500
KSF-50 with pump & VFD	5-150 GPM	87 PSI (6 BAR)	4" TC	\$18,000

Pump and motor without cart and VFD pricing is available.

Equipment Details

- All contact materials are 316L stainless steel
- Gaskets: EPDM
- Stator: Black NBR
- Mechanical seal:
 - Rotary part: Silicon Carbide (SiC)
 - Stationary part: Carbon (C)
- Temperature range: up to 185°F
- Voltage: customer to specify
 - 3 phase / 60 hertz - 240v or 480v



Last updated: 01/19/2021

INOXPA RVN HELICOIDAL PUMP

Overview

The Inoxpa RVN Helicoidal Pump features a unique helicoidal impeller design which provides exceptionally gentle must transfers. Due to its unique shape and flow, solid particles pass through the pump without being damaged and without clogging.

RVN pumps are widely used in wineries for the pumpover process where the high capacity and minimum destruction of the solid parts (seeds, skins, etc.) is required. The design of the pump contributes to a better extraction of tannins and reduction of lees formation, therefore achieving higher quality wines. The RVN is the standard for automated tank pumpovers.



Key Features

- Best-in-class for pumpovers due to helicoidal design
- Gentle handling of product
- No clogging
- Handles solids up to 50%
- Non-reversible, non-self-priming

MODEL	MAX FLOW RATE (GPM)	MAX PRESSURE	CONNECTIONS	PRICE
RVN-65 pump head only	5-150 GPM	145 PSI (10 BAR)	2.5" TC	\$2,900
RVN-80 pump head only	5-400 GPM	145 PSI (10 BAR)	3" TC	\$4,400
RVN-100 pump head only	5-700 GPM	145 PSI (10 BAR)	4" TC	\$18,000

Pump with cart and VFD pricing is available.

Equipment Details

- All contact materials are 316L stainless steel
- Gaskets: EPDM
- Mechanical seal:
 - Rotary part: Silicon Carbide (SiC)
 - Stationary part: Silicon Carbide (SiC)
- Temperature range: up to 248°F
- Voltage: customer to specify
 - 3 phase / 60 hertz - 240v or 480v



[Click to watch the RVN in action](#)

Last updated: 01/19/2021

INOXPA SEN CENTRIFUGAL PUMP

Overview

Due to its sanitary and economical design, the Inoxpa Hyginox SEN Pump can be used as a main process pump in the wine industry. It is also highly recommended for CIP processes.

Key Features

- Sanitary design
- Compact construction
- Non-reversible
- Non-self-priming



MODEL	MAX FLOW RATE (GPM)	MAX PRESSURE	CONNECTIONS	PRICE
SEN-15 (2 HP) w/ cart & VFD	5-40 GPM	145 PSI (10 BAR)	1.5" inlet x 1.5" outlet TC	\$2,500
SEN-15 (2 HP) w/ cart & VFD	5-200 GPM	145 PSI (10 BAR)	3" inlet x 2" outlet TC	\$5,000
SEN-15 (2 HP) w/ cart & VFD	5-240 GPM	145 PSI (10 BAR)	3" inlet x 2" outlet TC	\$6,800

Pump and motor without cart and VFD pricing is available.

Equipment Details

- All contact materials are 316L stainless steel
- Gaskets: EPDM
- Mechanical seal:
 - Rotary part: Silicon Carbide (SiC)
 - Stationary part: Carbon (C)
- Temperature range: up to 248°F
- Voltage: customer to specify
 - 3 phase / 60 hertz - 240v or 480v



Last updated: 01/19/2021

INOXPA HCP CENTRIFUGAL PUMP WITH CART

Overview

The Inoxpa Prolac HCP is a range of close-coupled centrifugal pumps with a compact, highly efficient hygienic design. It is made of a cold-formed stainless steel casing, impeller, mechanical seal, pump cover, lantern and shaft, connected to the motor shaft by mechanical compression. The motor complies with the IEC standards.



Key Features

- Designed for liquid-only transfers
- High efficiency speed and throughput
- Hygienic design with gentle handling of product
- Pump comes with a stainless steel cart and VFD with speed control
- Non-reversible and non-self-priming

MODEL	MAX FLOW RATE (GPM)	MAX PRESSURE	CONNECTIONS	PRICE
HCP 50-190 w/cart & VFD	5-250 GPM	116 PSI (8 BAR)	2.5" inlet x 2" outlet TC	\$8,600
HCP 80-240 (15 HP) w/cart & VFD	5-400 GPM	116 PSI (8 BAR)	4" inlet x 3" outlet TC	\$13,100
HCP 80-240 (20 HP) w/cart & VFD	5-750 GPM	116 PSI (8 BAR)	4" inlet x 3" outlet TC	\$14,000

Pump and motor without cart and VFD pricing is available.

Equipment Details

- All contact materials are 316L stainless steel
- Gaskets: EPDM
- Mechanical seal:
 - Rotary part: Silicon Carbide (SiC)
 - Stationary part: Carbon (C)
- Temperature range: up to 248°F
- Voltage: customer to specify
 - 3 phase / 60 hertz - 240v or 480v



Last updated: 01/19/2021

INOXPA RF FLEXIBLE IMPELLER PUMP WITH CART

Overview

The Inoxpa RF is a flexible impeller pump. Due to the design, these pumps are reversible, self-priming and can suck from a maximum height of 16 feet. This type of pump is designed to pump products of both low and high viscosities at a low or high volume.

Key Features

- Excellent value
- Transfer case ensures reversible capability
- Self-priming
- Easy maintenance
- External single mechanical seal
- Pumps products of both low and high viscosity



MODEL	MAX FLOW RATE (GPM)	MAX PRESSURE	CONNECTIONS	PRICE
RF 05/25 w/cart & VFD	5-15 GPM	58 PSI (4 BAR)	1" TC	\$4,400
RF 10/40 w/cart & VFD	5-35 GPM	58 PSI (4 BAR)	1.5" TC	\$6,700
RF 20/50 w/cart & VFD	5-80 GPM	58 PSI (4 BAR)	2" TC	\$7,000

Pump and motor without cart and VFD pricing is available.

Equipment Details

- All contact materials are 316L stainless steel
- Gaskets: Black NBR
- Mechanical seal:
 - Rotary part: Carbon (C)
 - Stationary part: Ceramic (Cer)
- Temperature range: up to 176°F
- Voltage: customer to specify
 - 3 phase / 60 hertz - 240v or 480v

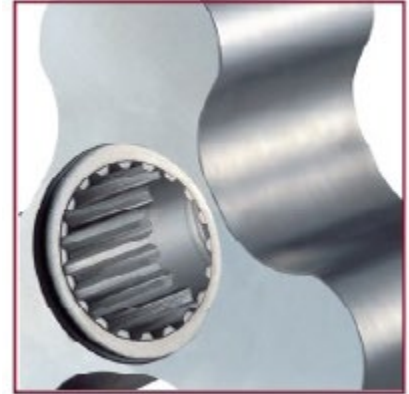


Last updated: 01/19/2021

INOXPA TLS ROTARY LOBE PUMP WITH CART

Overview

The Inoxpa TLS is a positive displacement rotary lobe pump designed to meet the sanitary requirements of the winery. This all-purpose pump is highly efficient and reliable, with a compact footprint that makes it easy to work within tight winery and cellar spaces. Specially designed lobes ensure that must transfers are exceptionally gentle, preventing damage to your fruit.



Key Features

- Durable
- Compact design
- Sanitize with hot water up to 248°F
- Reversible
- Non-self-priming

MODEL	MAX FLOW RATE (GPM)	MAX PRESSURE	CONNECTIONS	PRICE
TLS 1-40 w/cart & VFD	5-35 GPM	102 PSI (7 BAR)	1" TC	\$7,600
TLS 2-50 w/cart & VFD	5-75 GPM	102 PSI (7 BAR)	1.5" TC	\$9,400
TLS 1-40 w/cart & VFD	5-160 GPM	102 PSI (7 BAR)	2" TC	\$13,800

Pump and motor without cart and VFD pricing is available.

Equipment Details

- All contact materials are 316L stainless steel
- Gaskets: EPDM
- Mechanical seal:
 - Rotary part: Silicon Carbide (SiC)
 - Stationary part: Carbon (C)
- Temperature range: up to 248°F
- Voltage: customer to specify
 - 3 phase / 60 hertz - 240v or 480v



Last updated: 01/19/2021

INOXPA BUTTERFLY VALVE W/ MULTITPOSITION HANDLE

Overview

Inoxpa Butterfly Valves are used in most liquid product applications in the beverage processing industry. Standard sizes available through Scott Laboratories are 1.5", 2", 3" and 4".

Key Features

- Sanitary design
- Low pressure losses
- Easily interchangeable handles
- Adapts to any connection size



MODEL / CONNECTION SIZE	PRICE
Butterfly valve 1.5" connection with multipositional handle included	\$112.00
Butterfly valve 2" connection with multipositional handle included	\$130.00
Butterfly valve 3" connection with multipositional handle included	\$178.00
Butterfly valve 4" connection with multipositional handle included	\$273.00

Additional sizes and options are available upon request by special order.

Last updated: 01/19/2021

INOXPA BALL VALVE W/ CIP & 2 POSITION HANDLE

Overview

Inoxpa Ball valves are used primarily with viscous fluids requiring an unobstructed flow of product. The CIP allows sanitation without removal or disassembly of valve.

Key Features

- 2-position handle locks the valve in an open or closed position
- Low pressure losses
- Sanitary design includes CIP to allow sanitation without removal or disassembly of valve
- Adapts to any connection size



MODEL / CONNECTION SIZE

PRICE

Ball valve with 2" connection and CIP includes 2-position handle	\$306.00
Ball valve with 3" connection and CIP includes 2-position handle	\$538.00
Ball valve with 4" connection and CIP includes 2-position handle	\$766.00

Additional sizes and options are available upon request by special order.