



MASILVA
WEARECORK

SARA ADVANCED®



NEW INNOVATION

- State-of-the-art technology has been developed to sterilize and improve the quality of natural cork stoppers, Silktop® corks and Viva® corks.



MASILVA
WEARECORK



SARA ADVANCED®

NEW INNOVATION

- Cutting edge technology: Initial investment of 1 Million €.



MASILVA
WEARECORK



SARA ADVANCED

OBJECTIVES

- Develop a preventative and curative method to control TCA and other phenols of natural cork stoppers.
- Improve quality results in post-punching process.



**Natural
Corks**



**Silktop
Advanced[®]
Corks**



**Viva[®]
Corks**

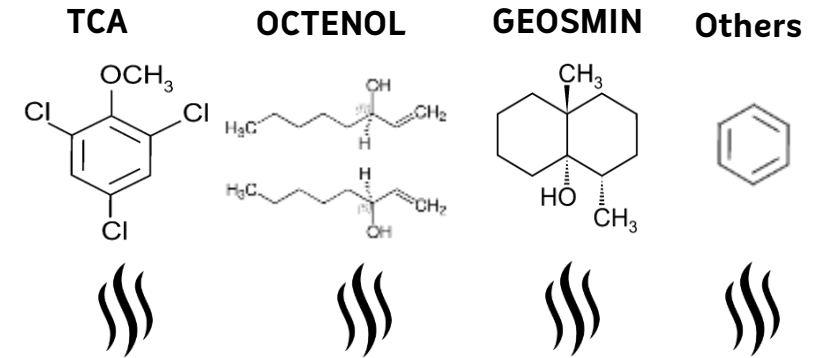
The method uses these controlled properties:

SARA ADVANCED®

 **TEMPERATURE** 

 **DRY STEAM** 

 **PRESSURE** 



VOLATILES EXTRACTION





SARA ADVANCED®

SARA ADVANCED®



TCA IS DRAMATICALLY REDUCED

– Corks are treated with pressurized steam to volatilize TCA and other phenols.

PORES DILATATION

– During the process, the elastic memory of cork is used. As it expands, the steam reaches deeper into the pores of each cork stopper to facilitate the volatilization and extraction of all undesirable compounds.

THE SYSTEM ENSURES A CONTINUOUS AND AUTOMATIC PROCESS

– Dry steam extraction avoids any risk of cross contamination by microorganisms, as well as creating optimal conditions to facilitate the process.

SARA ADVANCED®



SENSORY PERFORMANCE REMARKABLY ENHANCED

All natural cork products benefits from a drastically reduction in off-flavors **others than just TCA**

ISO 22308:2005 – Cork Stoppers – Sensory analysis
Group of odour/flavours identified:

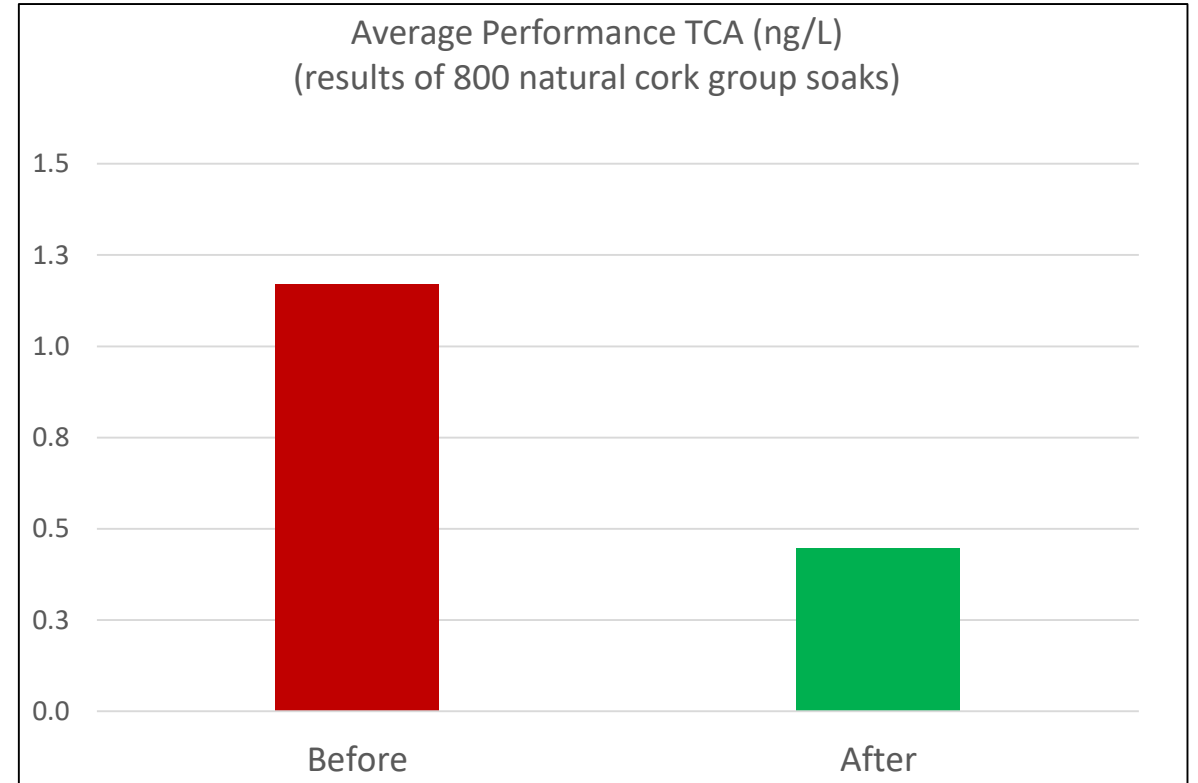
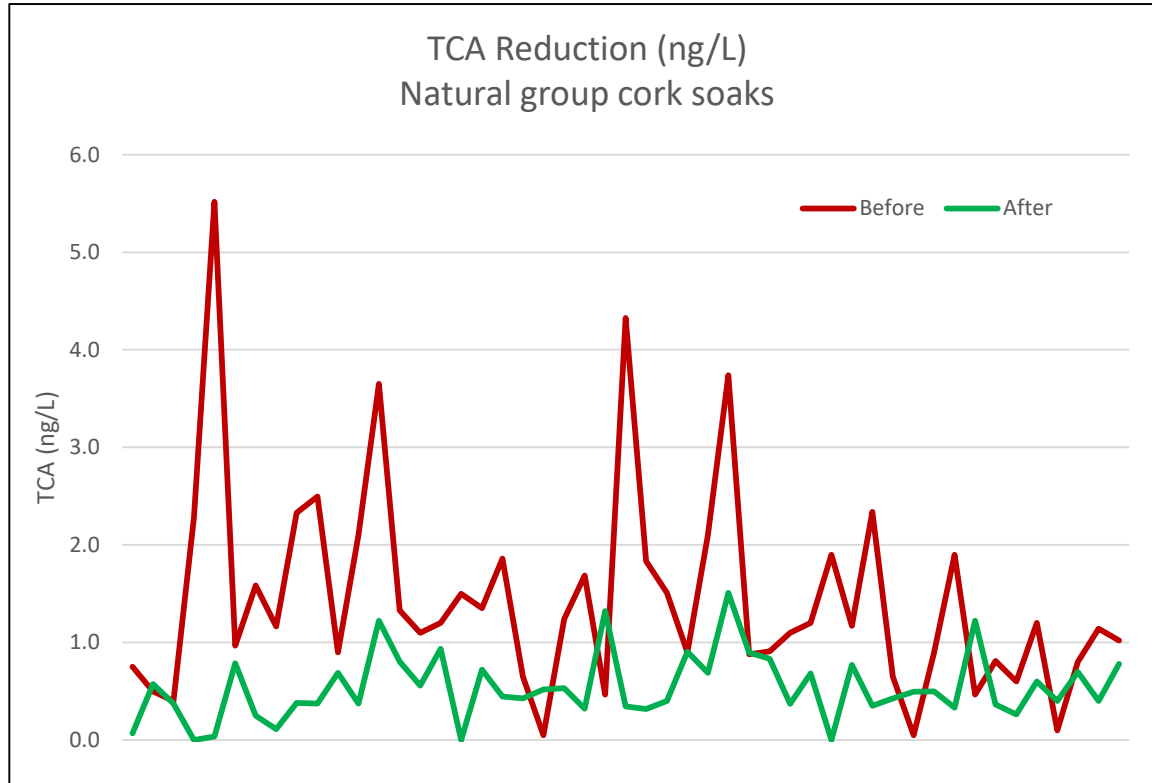
Chemical group	Phenol, hydrocarbon, ...
Vegetal group	Fresh grass, cut hay, Eucalyptus
Earth group	Damp earth, earth
Mold group	Dry mold, cellar mold, TCA



MASILVA
WEARECORK

QUALITY CONTROL RESULTS

SARA ADVANCED®

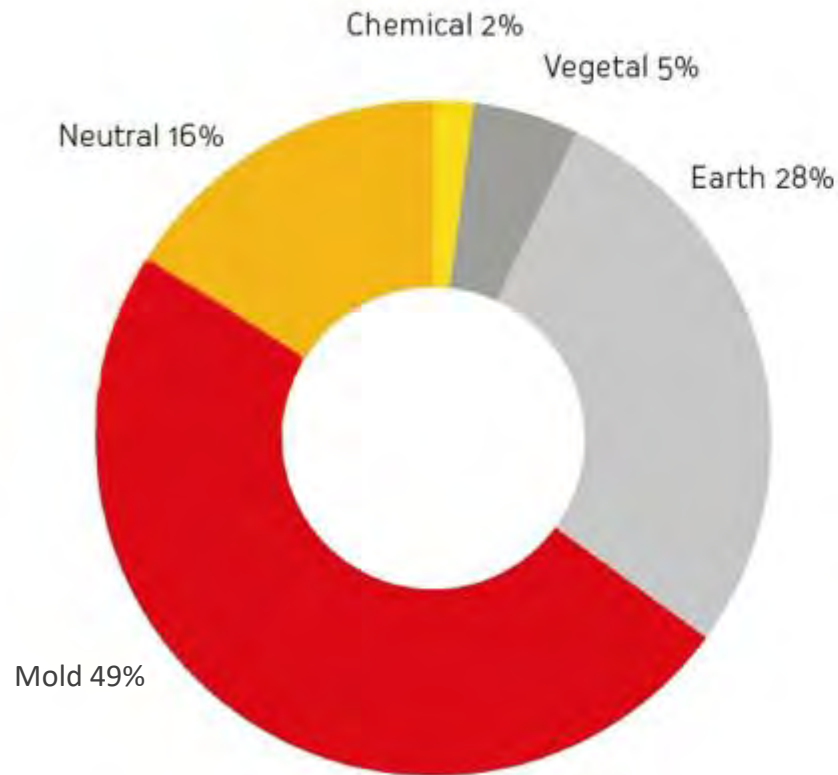


MASILVA
WEARECORK

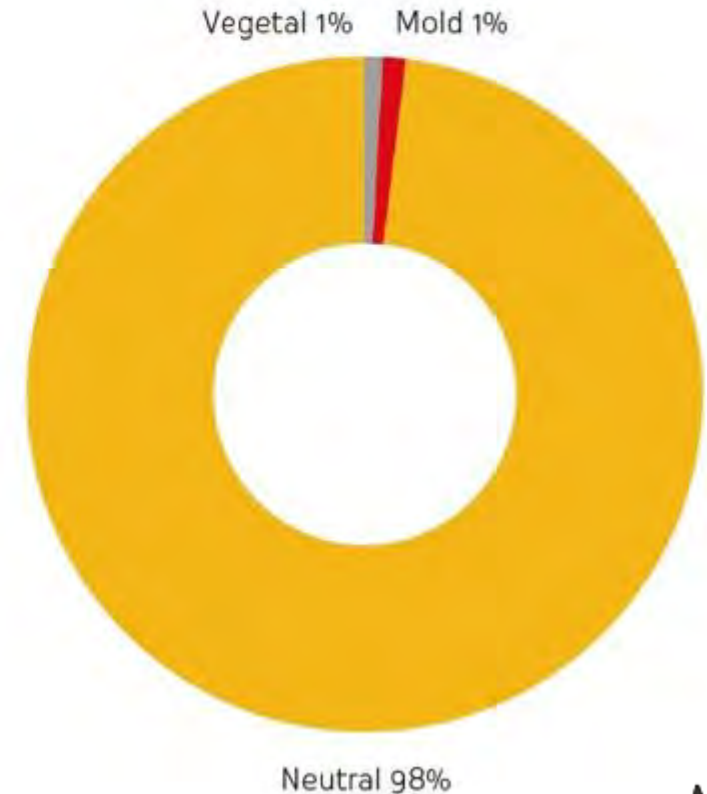
QUALITY CONTROL RESULTS

SARA ADVANCED®

SPECIALLY CONTAMINATED NATURAL CORKS



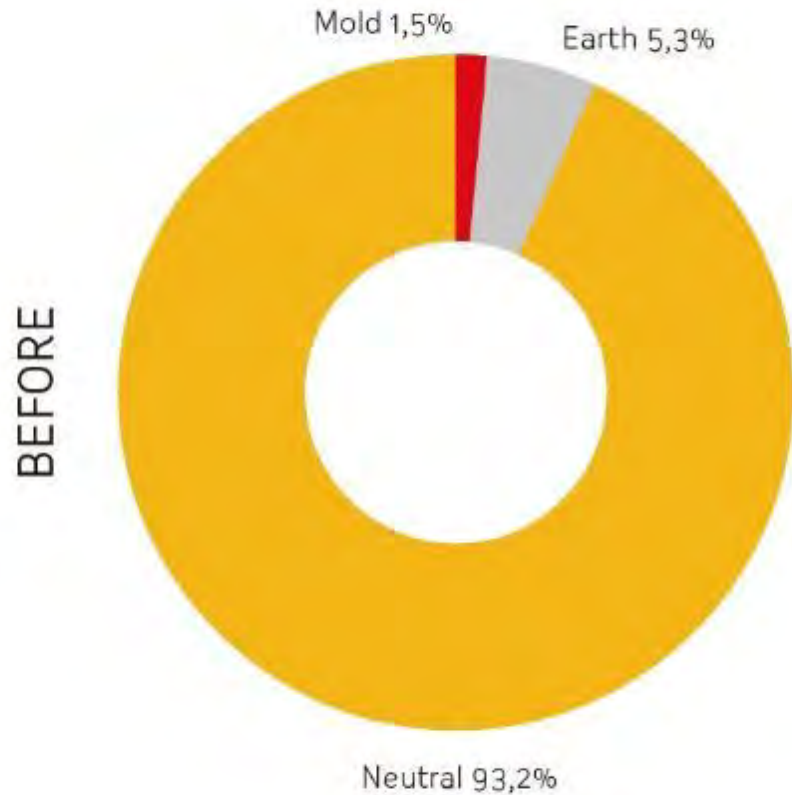
-  TEMPERATURE
-  DRY STEAM >
-  PRESSURE






QUALITY CONTROL RESULTS

SARA ADVANCED

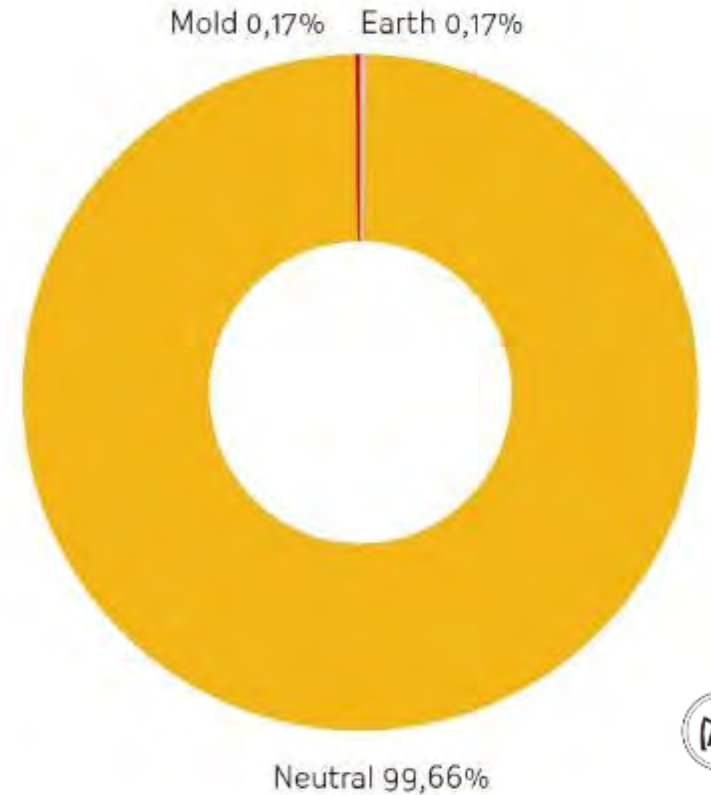
REGULAR NATURAL CORKS



-  TEMPERATURE
-  DRY STEAM
-  PRESSURE

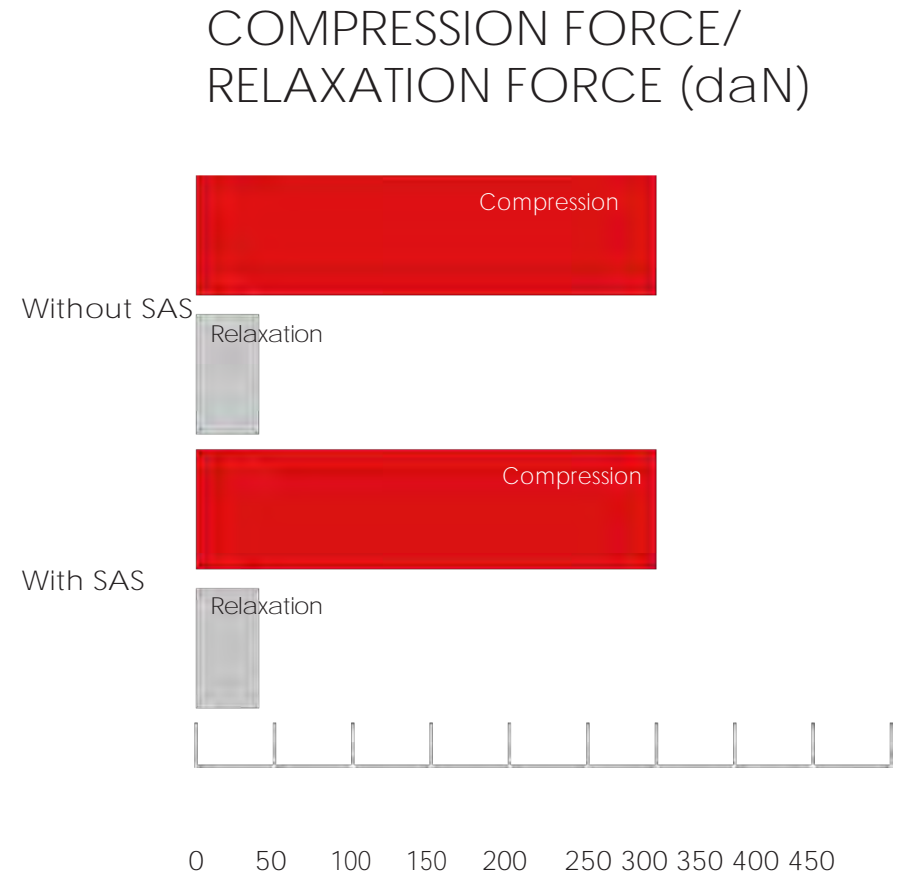
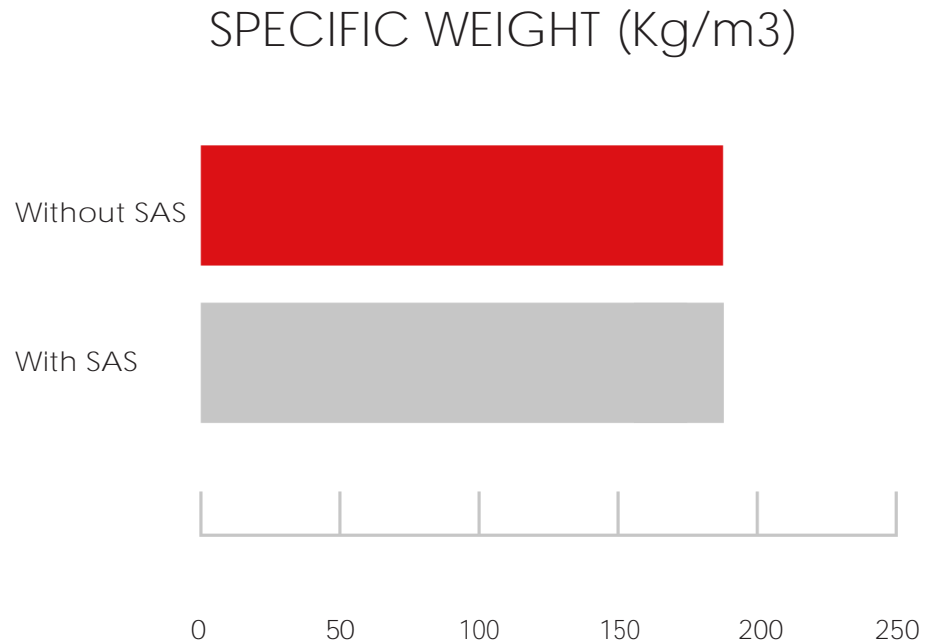


AFTER



MECHANICAL BEHAVIOUR

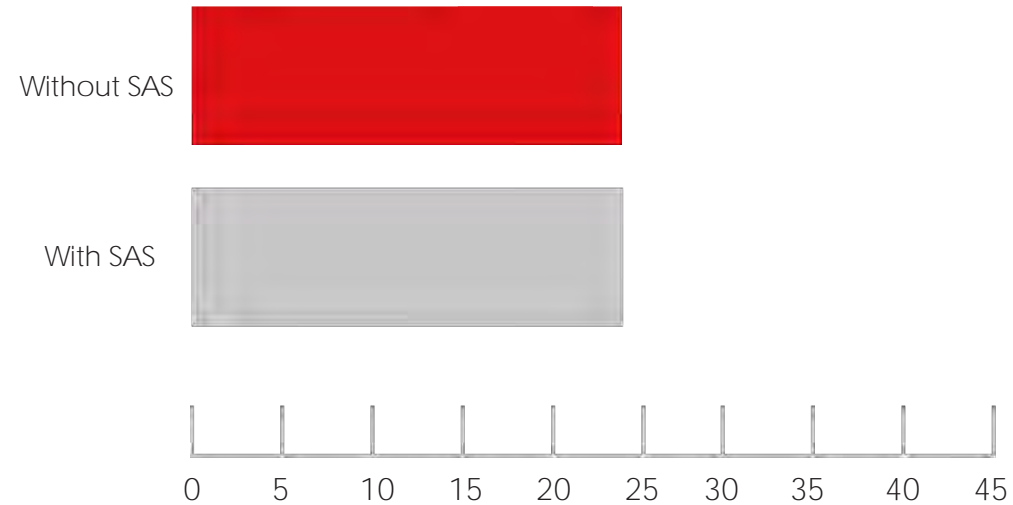
SARA ADVANCED



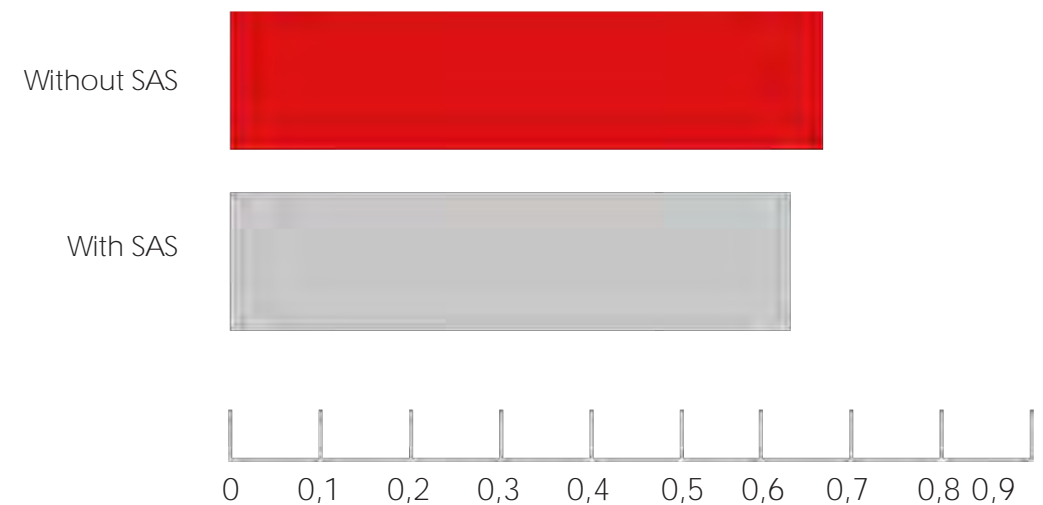
MECHANICAL BEHAVIOUR

SARA ADVANCED®

EXTRACTION FORCE (daN)



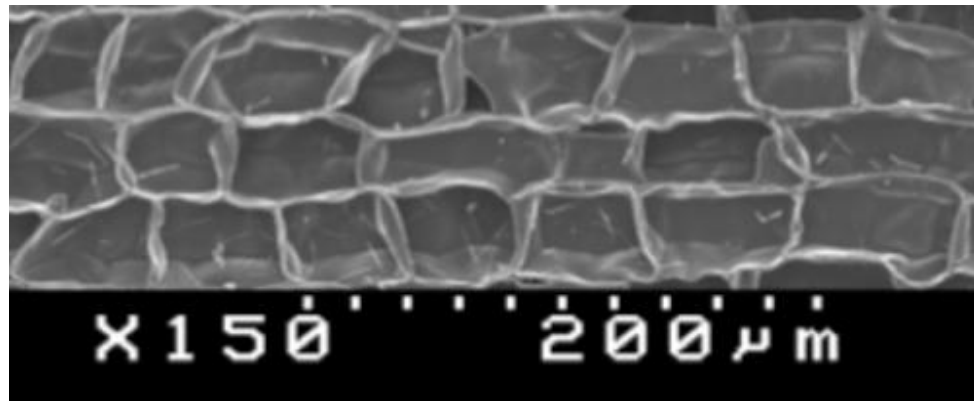
CAPILLARITY (mm)



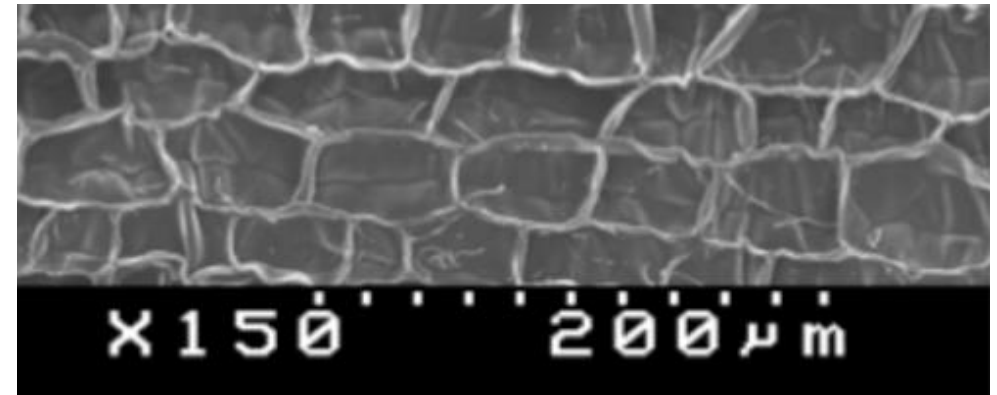
MECHANICAL BEHAVIOUR

SARA ADVANCED®

SCANNING ELECTRON MICROSCOPY (SEM)



Before SAS



After SAS

THANK YOU



MASILVA
WEARECORK