

# INOXPA PUMP GUIDE

## GENERAL APPLICATION

### KSF - Progressive Cavity Pump

- Excellent gentle handling of wine grapes and must
- Efficient design that can pump long distances

### RVN - Helicoidal Impeller Pump (Pumpovers)

- Best in class for pumpovers due to helicoidal design
- Gentle Handling of product
- No clogging

### Hyginex SEN - Centrifugal Pump

- Sanitary and economical design is highly efficient
- Value priced all around winery pump

## APPLICATION SPECIFIC

### HCP/HCPN - Centrifugal Pump

- Designed for high volume liquid transfers
- High speeds and efficient throughput
- Tank CIP

### RF - Flexible Impeller Pump

- Excellent value
- Reversible direction
- Machined head for high efficiency
- Easy maintenance

### TLS - Rotary Lobe Pump

- Most common all-purpose pump design for wineries
- Durable
- Compact design
- Sanitize with hot water up to 248°F

✓ Highly Recommended

	Must	Thick Liquids	Thin Liquids	Pumpover	Tank Transfer	Filtration
KSF - Progressive Cavity	✓	✓	✓			
RVN - Helicoidal				✓		
SEN - Centrifugal			✓		✓	✓
HCPN - Centrifugal			✓		✓	✓
RF - Flexible Impeller			✓		✓	✓
TLS - Rotary Lobe			✓	✓	✓	✓

# INOXPA HCPN CENTRIFUGAL PUMP WITH CART

## Overview

The PROLAC HCPN is a range of close-coupled centrifugal pumps with hygienic design, compact and highly efficient. It is made of a cold-formed stainless steel casing, impeller, mechanical seal, pump cover, lantern and shaft, connected to the motor shaft by mechanical compression. The motor complies with the IEC standards.



## Key Features

- Designed for liquid only transfers
- High efficiency speed and throughput
- Hygienic design with gentle handling of product
- Pump comes with a stainless steel cart and VFD with speed control
- Non-reversible and non-self-priming

MODEL	MAX FLOW RATE (GPM)	MAX PRESSURE	CONNECTIONS	PRICE
HCPN 50-190 w cart & VFD	5-250 GPM	116 PSI (8 BAR)	2.5" inlet x 2" outlet TC	\$8,600
HCPN 80-240(15HP) w cart & VFD	5-400 GPM	116 PSI (8 BAR)	4" inlet x 3" outlet TC	\$13,100
HCPN 80-240(20HP) w cart & VFD	5-750 GPM	116 PSI (8 BAR)	4" inlet x 3" outlet TC	\$14,000

*Pump and motor pricing without VFD and cart is available.*

## Equipment Details

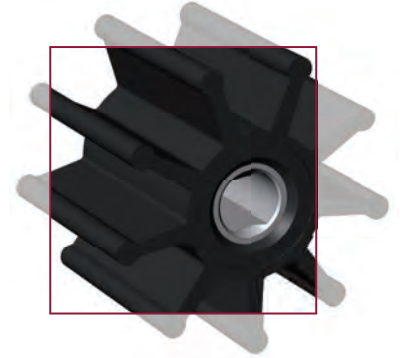
- All contact materials 316 L stainless steel
- Gaskets: EPDM
- Mechanical seal:
  - Rotary Part: Silicon carbide (SiC)
  - Stationary Part: Carbon (C)
- Temperature Range: Up to 248°F
- Voltage: Customer to specify
  - 3 Phase / 60 Hertz - 240v or 480v



# INOXPA RF FLEXIBLE IMPELLER PUMP WITH CART

## Overview

The RF pump is a flexible impeller pump. Due to the design, these pumps are reversible, self-priming and can suck from a maximum height of 16 feet. This type of pump is designed to pump products of both low and high viscosities at low or high volume



## Key Features

- Excellent value
- Transfer case ensures reversible capability
- Self-Priming
- Easy maintenance
- External Single mechanical seal
- Pumps products of both low and high viscosity

MODEL	MAX FLOW RATE (GPM)	MAX PRESSURE	CONNECTIONS	PRICE
RF 05/25 w cart & VFD	5-15 GPM	58 PSI (4 BAR)	1" TC	\$4,400
RF 10/40 w cart & VFD	5-35 GPM	58 PSI (4 BAR)	1.5" TC	\$6,700
RF 20/50 w cart & VFD	5-80 GPM	58 PSI (4 BAR)	2" TC	\$7,000

*Pump and motor without cart and VFD pricing is available.*

## Equipment Details

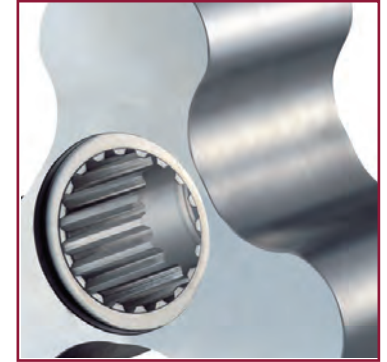
- All contact materials 316 L stainless steel
- Gaskets: Black NBR
- Mechanical seal:
  - Rotary Part: Carbon (C)
  - Stationary Part: Ceramic (Cer)
- Temperature Range: Up to 176°F
- Voltage: Customer to specify
  - 3 Phase / 60 Hertz - 240v or 480v



# INOXPA TLS ROTARY LOBE PUMP WITH CART

## Overview

The Inoxpa TLS is a positive displacement rotary lobe pump designed to meet the sanitary requirements of the winery. This all-purpose pump is highly efficient and reliable, with a compact footprint that makes it easy to work within tight winery and cellar spaces. Specially designed lobes ensure that must transfers are exceptionally gentle, preventing damage to your fruit.



## Key Features

- Durable
- Compact design
- Sanitize with hot water up to 248°F
- Reversible
- Non-self-priming

MODEL	MAX FLOW RATE (GPM)	MAX PRESSURE	CONNECTIONS	PRICE
TLS 1-40 w cart & VFD	5-35 GPM	102 PSI (7 BAR)	1.5" TC	\$7,600
TLS 2-50 w cart & VFD	5-75 GPM	102 PSI (7 BAR)	2" TC	\$9,400
TLS 3-80 w cart & VFD	5-160 GPM	102 PSI (7 BAR)	3" TC	\$13,800

*Pump and motor without cart and VFD pricing is available.*

## Equipment Details

- All contact materials 316 L stainless steel
- Gaskets: EPDM
- Mechanical seal:
  - Rotary Part: Silicon carbide (SiC)
  - Stationary Part: Carbon (C)
- Temperature Range: Up to 248°F
- Voltage: Customer to specify
  - 3 Phase / 60 Hertz - 240v or 480v

