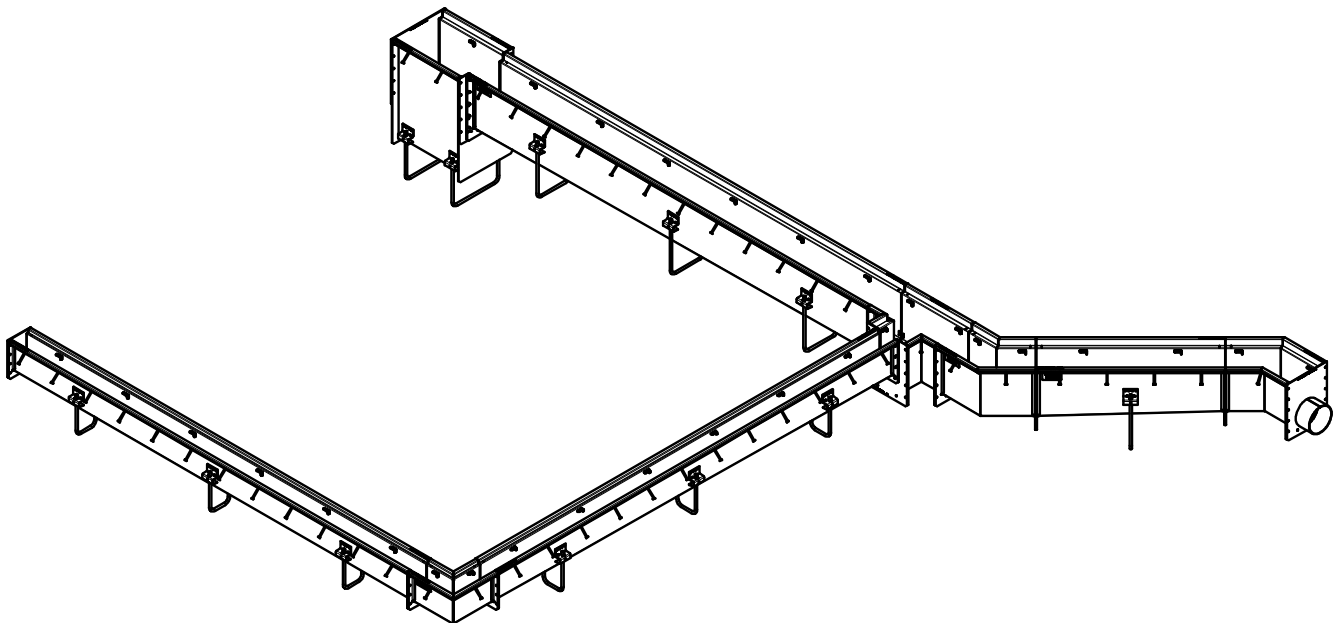


ABT, INC.[®]

Advanced Building Technologies, Inc.

Metal Trench Drains

MTX 04" - 08" - 12"
Enhanced Heavy Duty
Metal Trench Drain Systems



ABT METAL TRENCH DRAINS

MTX is a stainless steel trench drainage system for harsh environments and demanding applications. Designed for ease of assembly and installation, the system allows the designer to select from a wide variety of pre-engineered, modular components for a final product that is well fitted, aesthetically pleasing and reliable.

MATERIAL AND CORROSION RESISTANCE

Standard channels, grates and accessories are manufactured from AISI 304 stainless steel. For enhanced corrosion resistance, AISI 316L stainless steel is available on request.

STANDARD / SINGLE WALL TRENCH: Common in food processing industries, the single wall trench is fabricated from a continuous sheet of metal to provide superior containment and a smooth, seamless inner surface for washdown.

DOUBLE WALL TRENCH: Also known as Dual Containment, this is common in petrochemical industries. An inner sleeve is added to the trench section providing an additional environmental barrier. Channels are furnished with ports for inspection / leak detection between the inner and outer sleeves.

GRATE RETENTION:

For applications with higher loads and moderate longitudinal loading, grate Toggle locks are available with the optional Toggle Tabs in the channel components. Grate locks are commonly omitted in light load / duty applications where the weight of the grates is adequate to retain them; and in food processing / washdown applications to reduce areas of possible bacterial growth.

JOINTS BETWEEN CHANNEL SECTIONS:

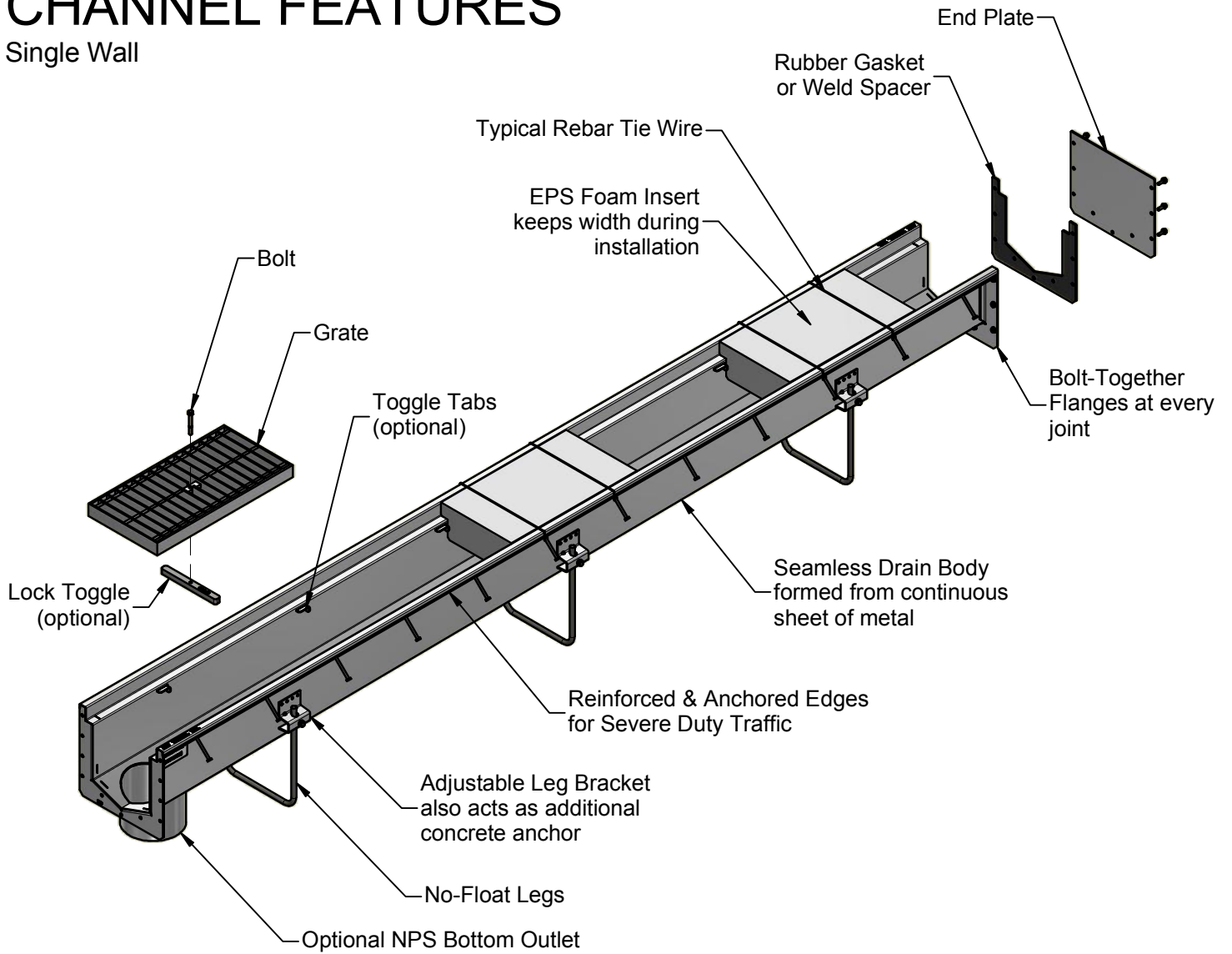
Joints may be field welded or rubber gasketed. Standard gasket material is EPDM rubber.

EASE OF INSTALLATION:

Utilizing a standard series of bolt-together flanges, each channel section and accessory is easily fitted to the next and joined with either a rubber gasket or a weld spacer. When applicable, field welding is performed from the top and inside of the channel only, with no reaching underneath in difficult spaces; and welding may be performed at any point of the installation, before or after the concrete pour. With ABT's no-float U-legs and horizontal suspension, the installation method allows for elevation adjustments prior to final concrete placement.

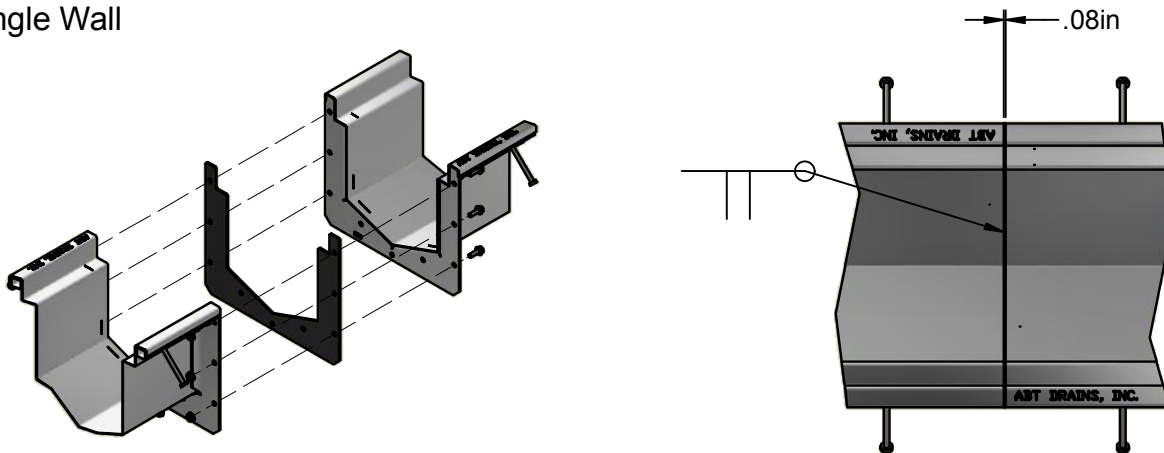
CHANNEL FEATURES

Single Wall



JOINTS

Single Wall



1. ASSEMBLE FLANGES WITH RUBBER GASKET OR METAL WELD SPACER

2a. GASKET: COMPRESSED TO .08" [2mm] OR THINNER
 2b. FIELD WELD: WELD ALL AROUND INSIDE OF CHANNEL*
 *field weld for 08in and 12in systems only

COMPONENTS

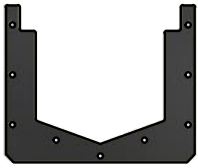
Single Wall



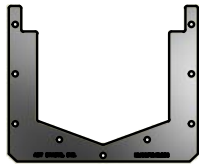
CHANNEL SECTION
1% slope and 0% (neutral slope)
Toggle retaining tabs optional



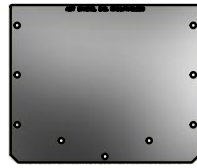
CHANNEL SECTION WITH BOTTOM OUTLET
Standard NPS outlet sizes
1% slope and 0% (neutral slope)
Toggle retaining tabs optional



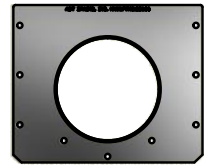
RUBBER GASKET
Weather-resistant
EPDM rubber



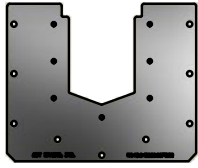
METAL WELD SPACER
Sets gap between channels
for easier and cleaner field
weld



BLANK END PLATE
Bolts to channel flange



OUTLET END PLATE
Bolts to channel flange
Standard NPS outlet sizes



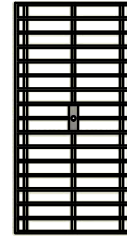
ADAPTER PLATE
Connects two
differently sized
channels end-to-end



NO-FLOAT U-LEG
Anchors channels to
resist flotation forces
during installation



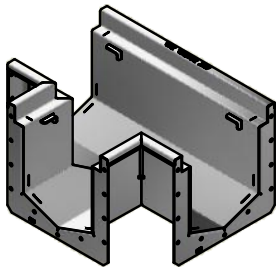
EPS FOAM INSERT
Maintains spacing
between channel sides
during installation
to ensure perfect fit



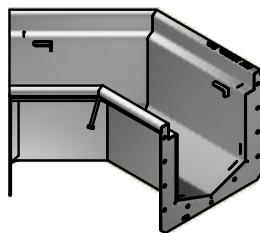
GRATE
Load rated and
independently tested
to support traffic
across the channel



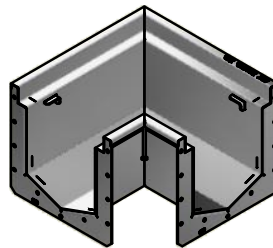
LOCK TOGGLE
Retains grate into
channel. Must be
used with toggle
tab channel option.



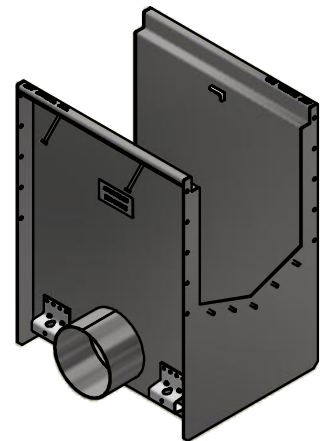
TEE SECTION
Joins three channels
of the same end depth
at a 90° angle.
Furnished with fitted grate.



45° ELBOW SECTION
Joins two channels
of the same end depth
at a 45° angle.
Furnished with fitted grate.



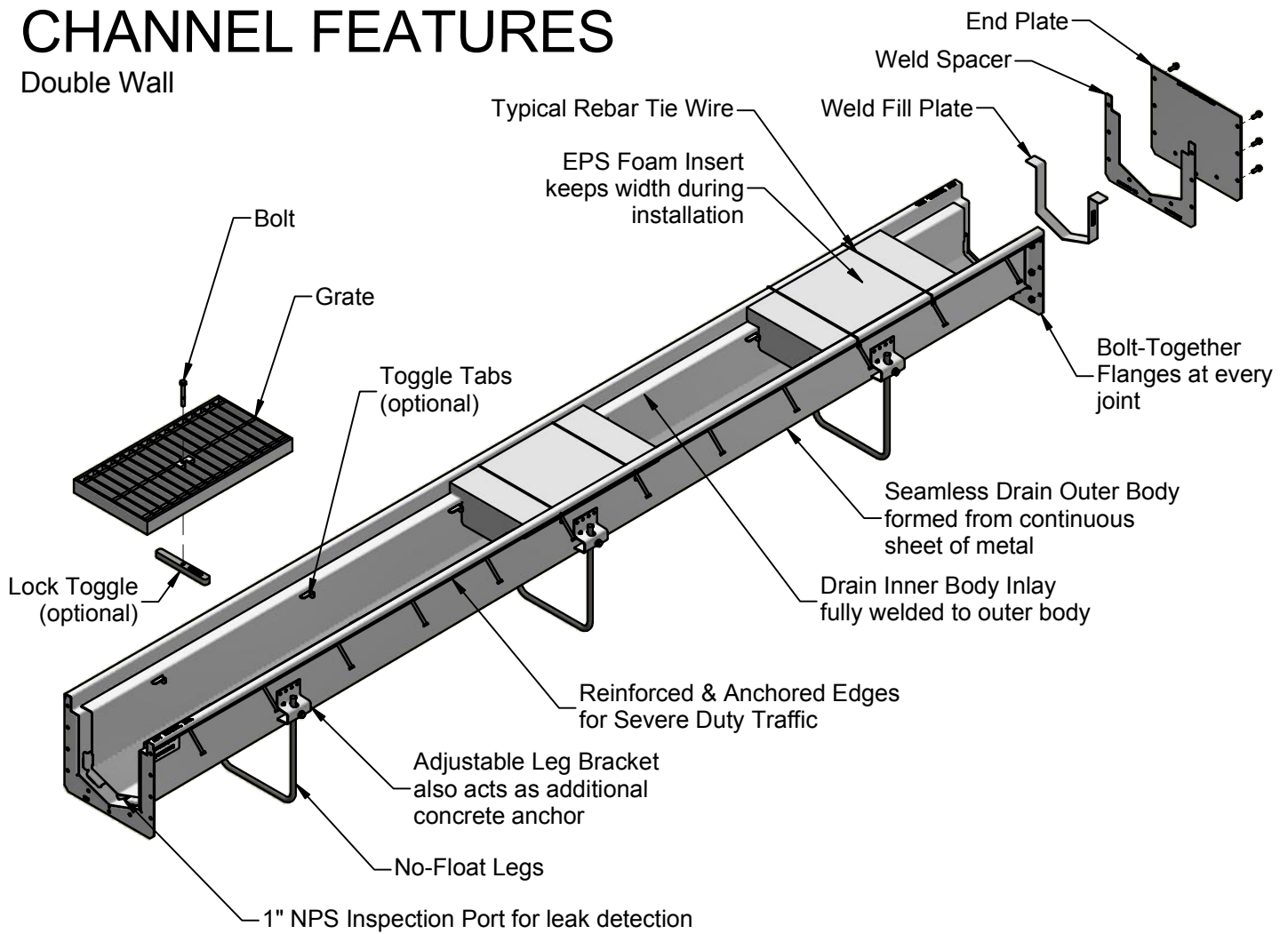
90° ELBOW SECTION
Joins two channels
of the same end depth
at a 90° angle.
Furnished with fitted grate.



CATCH BASIN
Side 6" NPS outlet.
Furnished with fitted grate
and adapter plates to suit.

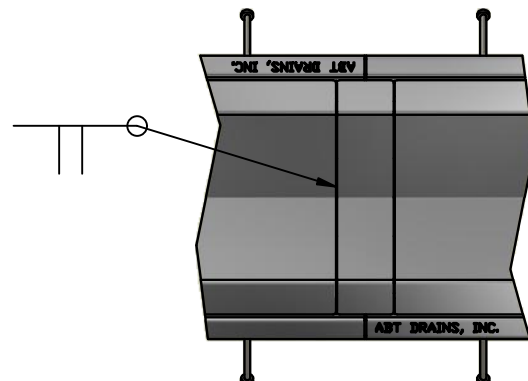
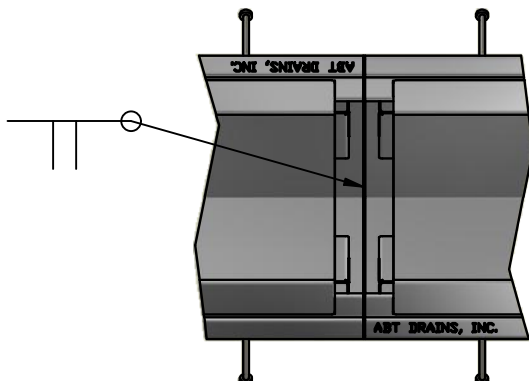
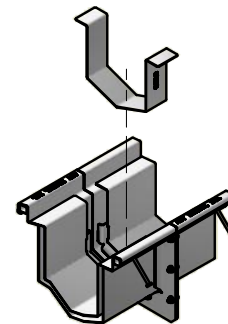
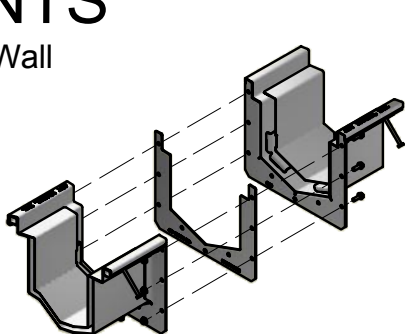
CHANNEL FEATURES

Double Wall



JOINTS

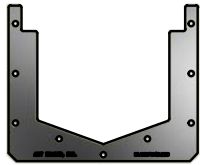
Double Wall



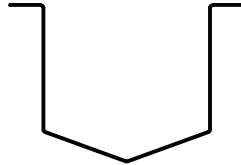
COMPONENTS

Double Wall

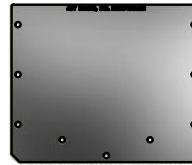
DOUBLE WALL CHANNEL SECTION
 1% slope and 0% (neutral slope)
 Toggle retaining tabs optional
 All channels furnished with 1" NPS inspection port for monitoring of dual containment.



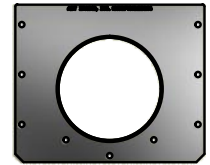
METAL WELD SPACER
 Sets gap between channels for easier and cleaner field weld



WELD FILL PLATE
 Fills gap between inner walls allowing all field welding to be easily accessible



BLANK END PLATE
 Bolts to channel flange



OUTLET END PLATE
 Bolts to channel flange
 Standard NPS outlet sizes



NO-FLOAT U-LEG
 Anchors channels to resist flotation forces during installation



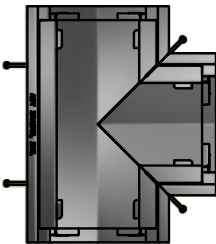
EPS FOAM INSERT
 Maintains spacing between channel sides during installation to ensure perfect fit



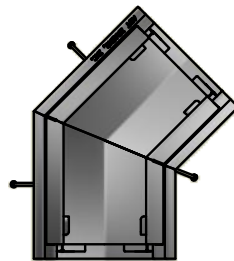
GRATE
 Load rated and independently tested to support traffic across the channel



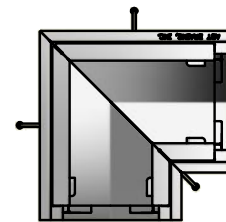
LOCK TOGGLE
 Retains grate into channel. Must be used with toggle tab channel option.



DOUBLE WALL TEE SECTION
 Joins three channels of the same end depth at a 90° angle.
 Furnished with fitted grate.



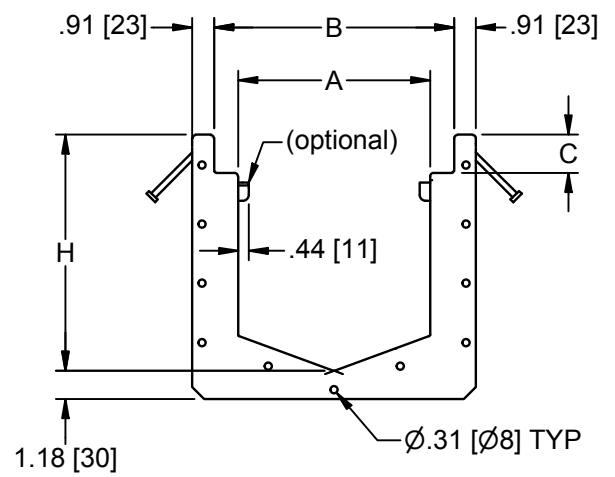
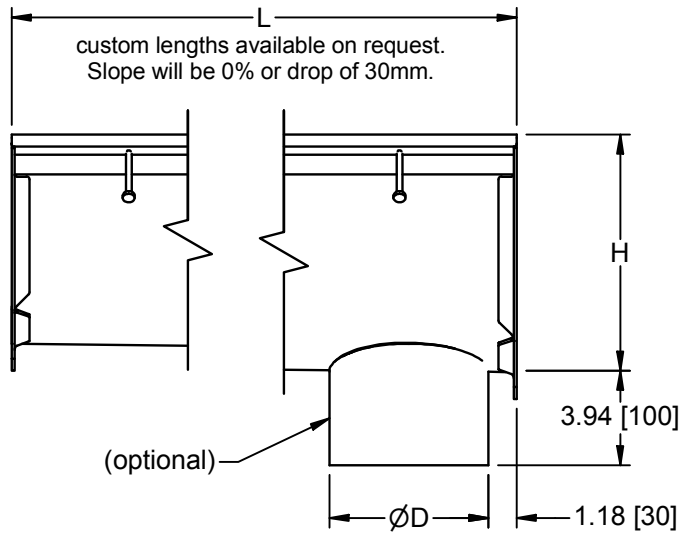
DOUBLE WALL 45° ELBOW SECTION
 Joins two channels of the same end depth at a 45° angle.
 Furnished with fitted grate.



DOUBLE WALL 90° ELBOW SECTION
 Joins two channels of the same end depth at a 90° angle.
 Furnished with fitted grate.

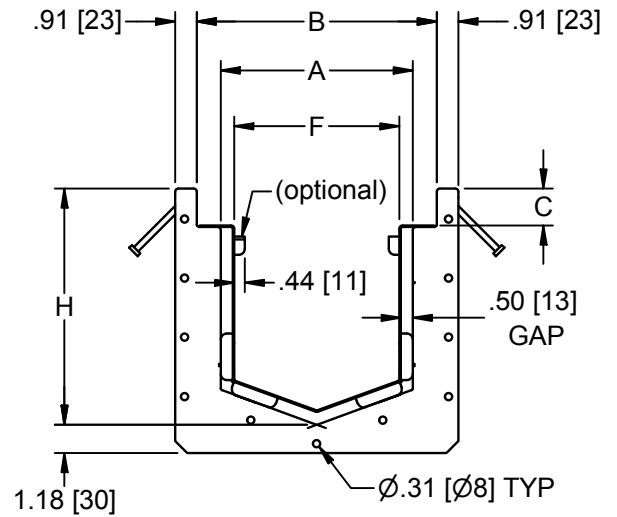
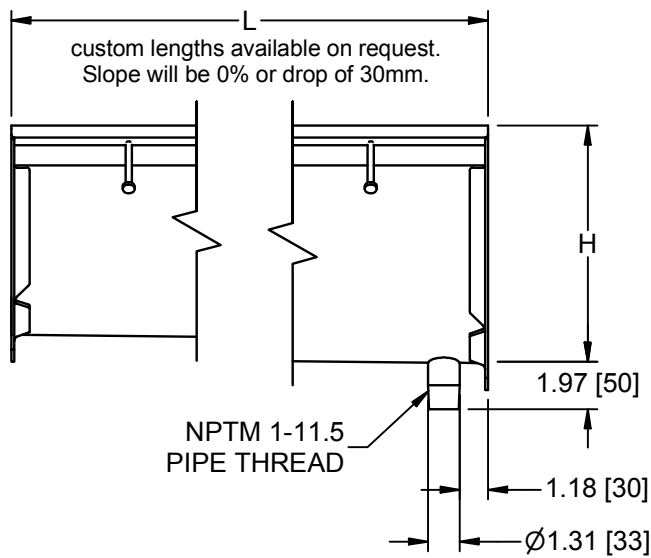
CHANNEL DIMENSIONS

Shown in inches. Dual dimensions in mm shown in brackets for reference only.



SINGLE WALL CHANNEL DIMENSIONS

Trench Size	Dim H Range (Increments of 30mm)	Dim L	Dim A	Dim B	Dim C	Dim D
4" System	5.12 [130] min - 9.84 [250] max	117.72 [2990]	4.10 [104]	5.00 [157]	0.81 [21]	3 NPS
8" System	6.30 [160] min - 15.75 [400] max	118.03 [2998]	8.00 [203]	10.00 [254]	1.56 [40]	6 NPS
12" System	6.30 [160] min - 15.75 [400] max	118.03 [2998]	12.00 [305]	14.00 [356]	1.56 [40]	10 NPS

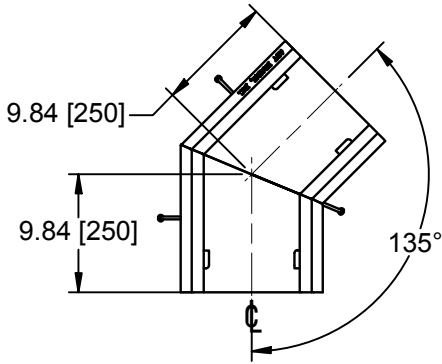


DOUBLE WALL CHANNEL DIMENSIONS

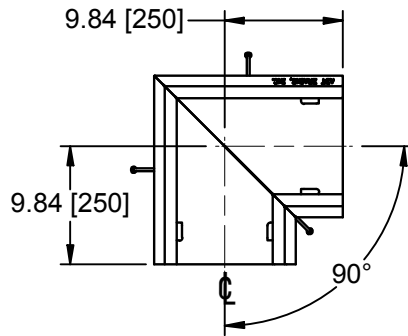
Trench Size	Dim H Range (Increments of 30mm)	Dim L	Dim A	Dim B	Dim C	Dim F
8" System	6.30 [160] min - 15.75 [400] max	118.03 [2998]	8.00 [203]	10.00 [254]	1.56 [40]	6.88 [175]
12" System	6.30 [160] min - 15.75 [400] max	118.03 [2998]	12.00 [305]	14.00 [356]	1.56 [40]	10.88 [276]

INTERSECTION DIMENSIONS

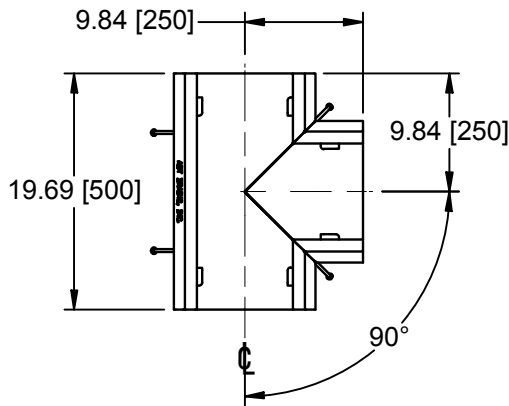
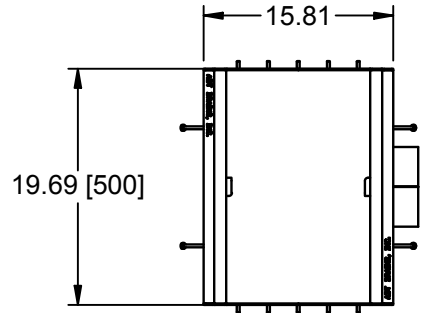
Shown in inches. Dual dimensions in mm shown in brackets for reference only.
 Dimensions apply to all trench widths and styles.
 Refer to channel dimensions for any measurements not shown here.



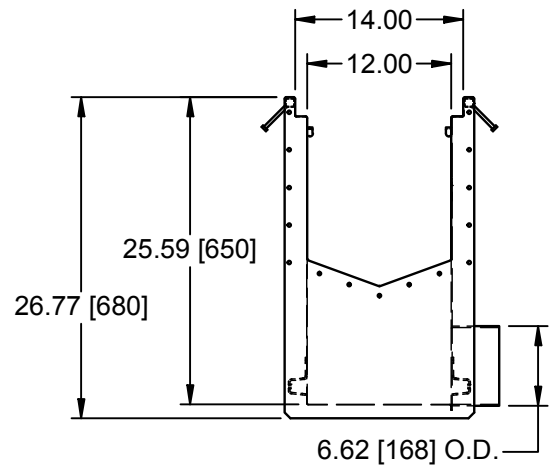
45° ELBOW SECTION



90° ELBOW SECTION



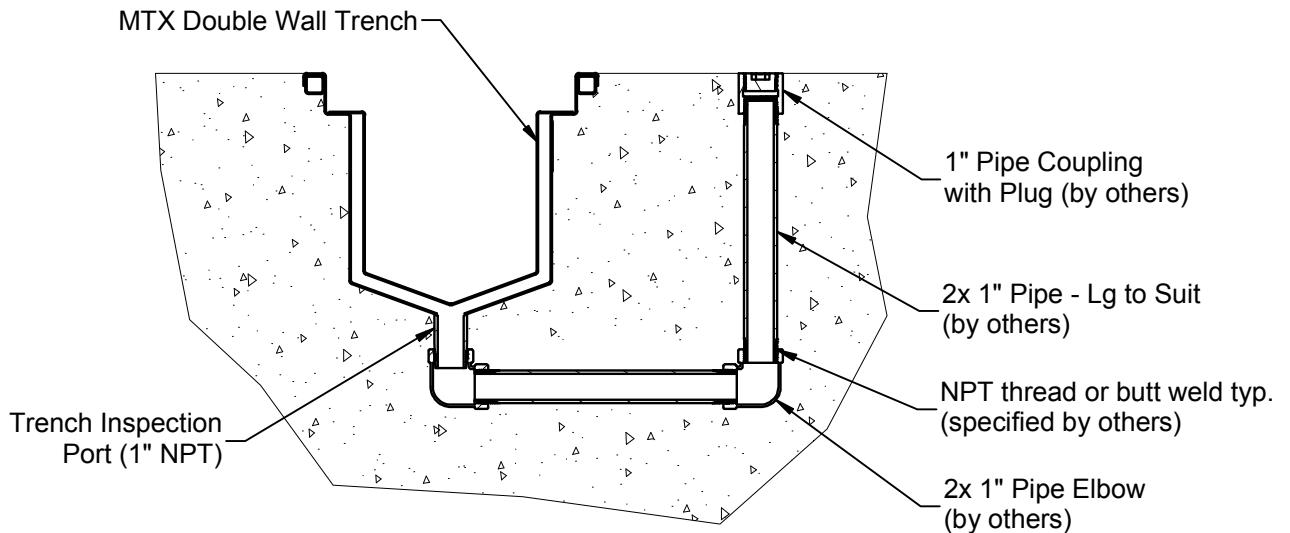
TEE SECTION



CATCH BASIN

TYPICAL DOUBLE WALL LEAK DETECTION

Common configuration shown. Others are possible.
 Standard pipe components supplied by others.



INSTALLATION PROCEDURE

Dimensions shown in inches. Dual dimensions in mm shown in brackets for reference only.

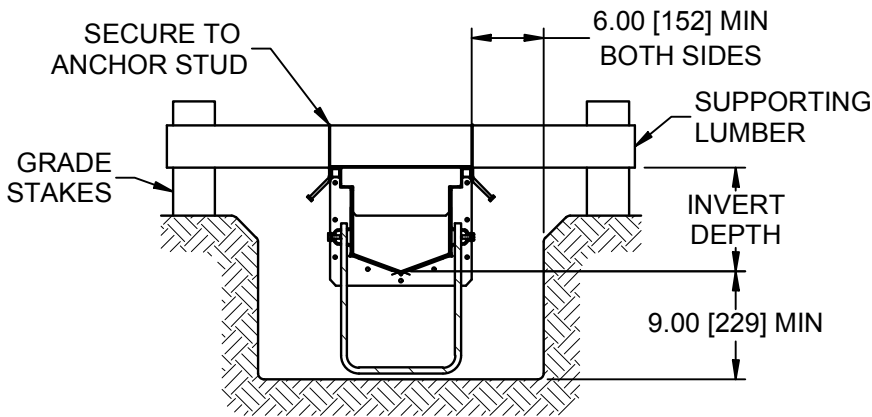


Figure 1

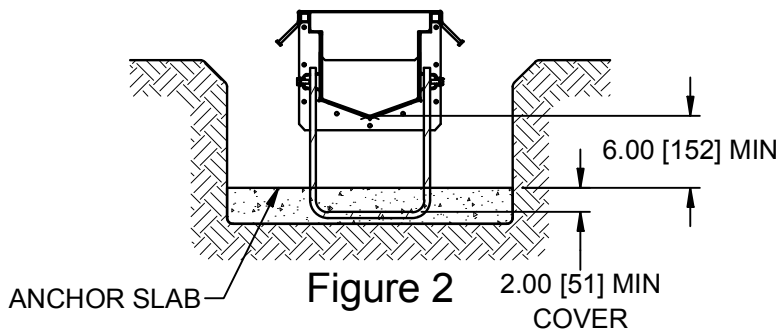


Figure 2

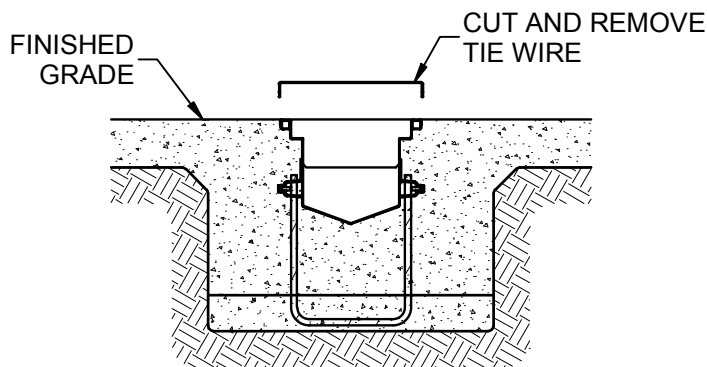


Figure 3

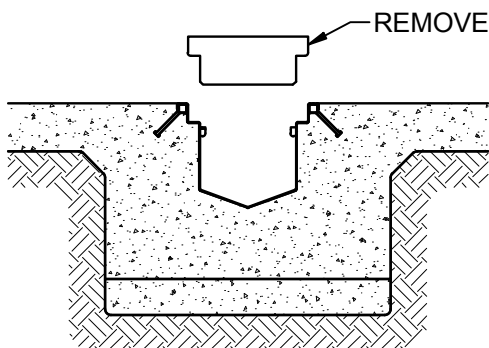


Figure 4

Excavation - must provide for 6 inches minimum on both sides of the channel and 9 inches minimum below the channel bottom (see Figure 1). Structural slabs may require additional excavation. Consult your structural engineer. Bottom allowance includes 3 inches of clearance for the no-float U-Legs and anchoring slab.

Pre-Assembly - Lay out the channel sections along the excavation in the proper sequence. Assemble all U-Legs to channel sections by inserting each leg into the holes of opposing rail clamps and secure with screws. Place Foam Inserts approximately at every U-Leg. Tightly secure rebar tie wire around opposing anchor studs and across the top of the Foam Insert to ensure a snug fit and precise grate seat dimension.

Component Placement - Begin installation at the outlet, or deep end, of the trench. Attach a length of supporting lumber near each joint, securing with tie wire around anchor studs (see Figure 1). Place the first channel section into the excavation. Hold the top of the rail to finished grade and attach lumber to grade stakes (see Figure 1). Place the next channel section against the first and bolt the flanges together, using gasket or weld spacer as appropriate, and then set to elevation. Continue for entire trench.

Anchor Slab Placement - Place a concrete anchoring slab wall-to-wall and end-to-end in the bottom of the excavation. Cover the U-Legs with 2 inches minimum of concrete (see Figure 2). Allow this slab to set hard. If needed, make final grade adjustments by loosening the screws which hold the U-Legs.

Field Welding - when a field welded system is used, the channel joint welds may be placed before or after final concrete placement. However, outlets must be welded before final pour.

Final Concrete Placement - Monopour trench bottom and walls, vibrating for good consolidation. While finishing concrete, remove tie wire by trimming below top of channel (see Figure 3).

Final Assembly - Refer to concrete mix design (by others) to determine minimum safe time before loading concrete. Lift the Foam Inserts from the trench (see Figure 4). Lay grates into trench leaving a small (approx 1/16") gap between grate ends. A standard 3-meter channel section will require 6x 1/2m grates or 3x 1m grates. Where applicable, secure grates with Toggle Locks.

PART NUMBERS

4" Trench System - AISI 304

AISI 316L available upon request

bold text with gray background indicates stocked part

		4" Trench System - AISI 304							
		AISI 316L available upon request		bold text with gray background indicates stocked part					
		Inlet	Discharge	Plain Channel	Plain Channel with Toggle Tabs	Bottom Outlet Channel	Bottom Outlet Channel with Toggle Tabs		
				1% Sloped Channels	130	160	MC04.BN4B.2990.130.160	MC04.BA4B.2990.130.160	MC04.BN4B.2990.130.160.03
	160	190	MC04.BN4B.2990.160.190	MC04.BA4B.2990.160.190	MC04.BN4B.2990.160.190.03	MC04.BA4B.2990.160.190.03			
	190	220	MC04.BN4B.2990.190.220	MC04.BA4B.2990.190.220	MC04.BN4B.2990.190.220.03	MC04.BA4B.2990.190.220.03			
	220	250	MC04.BN4B.2990.220.250	MC04.BA4B.2990.220.250	MC04.BN4B.2990.220.250.03	MC04.BA4B.2990.220.250.03			
Neutral Channels	160	160	MC04.BN4B.2990.160.160	MC04.BA4B.2990.160.160	MC04.BN4B.2990.160.160.03	MC04.BA4B.2990.160.160.03			
	190	190	MC04.BN4B.2990.190.190	MC04.BA4B.2990.190.190	MC04.BN4B.2990.190.190.03	MC04.BA4B.2990.190.190.03			
	220	220	MC04.BN4B.2990.220.220	MC04.BA4B.2990.220.220	MC04.BN4B.2990.220.220.03	MC04.BA4B.2990.220.220.03			
	250	250	MC04.BN4B.2990.250.250	MC04.BA4B.2990.250.250	MC04.BN4B.2990.250.250.03	MC04.BA4B.2990.250.250.03			
End Options	Invert	Blank End Plate		Outlet End Plate		Gasket, EPDM			
	130	MN04.BN4B.130	MN04.BN4B.130.03	MG04.BNEB.130					
	160	MN04.BN4B.160	MN04.BN4B.160.03	MG04.BNEB.160					
	190	MN04.BN4B.190	MN04.BN4B.190.03	MG04.BNEB.190					
	220	MN04.BN4B.220	MN04.BN4B.220.03	MG04.BNEB.220					
250	MN04.BN4B.250	MN04.BN4B.250.03	MG04.BNEB.250						
Tees	Invert	Plain Tee		Tee with Toggle Tabs					
	130	MJ04.BN4B.130	MJ04.BA4B.130						
	160	MJ04.BN4B.160	MJ04.BA4B.160						
	190	MJ04.BN4B.190	MJ04.BA4B.190						
	220	MJ04.BN4B.220	MJ04.BA4B.220						
250	MJ04.BN4B.250	MJ04.BA4B.250							
Elbows	Invert	Plain 45deg Elbow		45deg Elbow with Toggle Tabs		Plain 90deg Elbow		90deg Elbow with Toggle Tabs	
	130	MK04.BN4B.130	MK04.BA4B.130	MK04.BN4B.130	MK04.BA4B.130	ML04.BN4B.130	ML04.BA4B.130		
	160	MK04.BN4B.160	MK04.BA4B.160	ML04.BN4B.160	MK04.BA4B.160	ML04.BN4B.160	ML04.BA4B.160		
	190	MK04.BN4B.190	MK04.BA4B.190	ML04.BN4B.190	MK04.BA4B.190	ML04.BN4B.190	ML04.BA4B.190		
	220	MK04.BN4B.220	MK04.BA4B.220	ML04.BN4B.220	MK04.BA4B.220	ML04.BN4B.220	ML04.BA4B.220		
250	MK04.BN4B.250	MK04.BA4B.250	ML04.BN4B.250	MK04.BA4B.250	ML04.BN4B.250	ML04.BA4B.250			
Misc.	Toggle Lock		MT04.4B		Plain Catch Basin		MB12.FN4B.650.06		
	Foam Insert		MF04.0450		Catch Basin w/ Toggle Tabs		MB12.FA4B.650.06		
	U-Leg for Inv. 130 - 220		MU04.2B.10						
	U-Leg for Inv. 250		MU04.2B.12						

PART NUMBERS

8" Trench System - AISI 304

AISI 316L available upon request

bold text with gray background indicates stocked part

			Plain Channel	Plain Channel with Toggle Tabs	Bottom Outlet Channel	Bottom Outlet Channel with Toggle Tabs
	Inlet	Discharge				
1% Sloped Channels	160	190	MC08.FN4B.2998.160.190	MC08.FA4B.2998.160.190	MC08.FN4B.2998.160.190.06	MC08.FA4B.2998.160.190.06
	190	220	MC08.FN4B.2998.190.220	MC08.FA4B.2998.190.220	MC08.FN4B.2998.190.220.06	MC08.FA4B.2998.190.220.06
	220	250	MC08.FN4B.2998.220.250	MC08.FA4B.2998.220.250	MC08.FN4B.2998.220.250.06	MC08.FA4B.2998.220.250.06
	250	280	MC08.FN4B.2998.250.280	MC08.FA4B.2998.250.280	MC08.FN4B.2998.250.280.06	MC08.FA4B.2998.250.280.06
	280	310	MC08.FN4B.2998.280.310	MC08.FA4B.2998.280.310	MC08.FN4B.2998.280.310.06	MC08.FA4B.2998.280.310.06
	310	340	MC08.FN4B.2998.310.340	MC08.FA4B.2998.310.340	MC08.FN4B.2998.310.340.06	MC08.FA4B.2998.310.340.06
	340	370	MC08.FN4B.2998.340.370	MC08.FA4B.2998.340.370	MC08.FN4B.2998.340.370.06	MC08.FA4B.2998.340.370.06
	370	400	MC08.FN4B.2998.370.400	MC08.FA4B.2998.370.400	MC08.FN4B.2998.370.400.06	MC08.FA4B.2998.370.400.06

Neutral Channels	190	190	MC08.FN4B.2998.190.190	MC08.FA4B.2998.190.190	MC08.FN4B.2998.190.190.06	MC08.FA4B.2998.190.190.06
	220	220	MC08.FN4B.2998.220.220	MC08.FA4B.2998.220.220	MC08.FN4B.2998.220.220.06	MC08.FA4B.2998.220.220.06
	250	250	MC08.FN4B.2998.250.250	MC08.FA4B.2998.250.250	MC08.FN4B.2998.250.250.06	MC08.FA4B.2998.250.250.06
	280	280	MC08.FN4B.2998.280.280	MC08.FA4B.2998.280.280	MC08.FN4B.2998.280.280.06	MC08.FA4B.2998.280.280.06
	310	310	MC08.FN4B.2998.310.310	MC08.FA4B.2998.310.310	MC08.FN4B.2998.310.310.06	MC08.FA4B.2998.310.310.06
	340	340	MC08.FN4B.2998.340.340	MC08.FA4B.2998.340.340	MC08.FN4B.2998.340.340.06	MC08.FA4B.2998.340.340.06
	370	370	MC08.FN4B.2998.370.370	MC08.FA4B.2998.370.370	MC08.FN4B.2998.370.370.06	MC08.FA4B.2998.370.370.06
	400	400	MC08.FN4B.2998.400.400	MC08.FA4B.2998.400.400	MC08.FN4B.2998.400.400.06	MC08.FA4B.2998.400.400.06

			Double Wall Channel	Double Wall Channel with Toggle Tabs
	Inlet	Discharge		
1% Sloped Channels	160	190	MC08.FN4B.2998.160.190.D	MC08.FA4B.2998.160.190.D
	190	220	MC08.FN4B.2998.190.220.D	MC08.FA4B.2998.190.220.D
	220	250	MC08.FN4B.2998.220.250.D	MC08.FA4B.2998.220.250.D
	250	280	MC08.FN4B.2998.250.280.D	MC08.FA4B.2998.250.280.D
	280	310	MC08.FN4B.2998.280.310.D	MC08.FA4B.2998.280.310.D
	310	340	MC08.FN4B.2998.310.340.D	MC08.FA4B.2998.310.340.D
	340	370	MC08.FN4B.2998.340.370.D	MC08.FA4B.2998.340.370.D
	370	400	MC08.FN4B.2998.370.400.D	MC08.FA4B.2998.370.400.D

Neutral Channels	190	190	MC08.FN4B.2998.190.190.D	MC08.FA4B.2998.190.190.D
	220	220	MC08.FN4B.2998.220.220.D	MC08.FA4B.2998.220.220.D
	250	250	MC08.FN4B.2998.250.250.D	MC08.FA4B.2998.250.250.D
	280	280	MC08.FN4B.2998.280.280.D	MC08.FA4B.2998.280.280.D
	310	310	MC08.FN4B.2998.310.310.D	MC08.FA4B.2998.310.310.D
	340	340	MC08.FN4B.2998.340.340.D	MC08.FA4B.2998.340.340.D
	370	370	MC08.FN4B.2998.370.370.D	MC08.FA4B.2998.370.370.D
	400	400	MC08.FN4B.2998.400.400.D	MC08.FA4B.2998.400.400.D

	Invert	Blank End Plate	Outlet End Plate	Gasket, EPDM	Weld Spacer
		160	MN08.FN4B.160	MN08.FN4B.160.03	MG08.FNEB.160
190	MN08.FN4B.190	MN08.FN4B.190.03	MG08.FNEB.190	MW08.FN4B.190	
220	MN08.FN4B.220	MN08.FN4B.220.03	MG08.FNEB.220	MW08.FN4B.220	
250	MN08.FN4B.250	MN08.FN4B.250.06	MG08.FNEB.250	MW08.FN4B.250	
280	MN08.FN4B.280	MN08.FN4B.280.06	MG08.FNEB.280	MW08.FN4B.280	
310	MN08.FN4B.310	MN08.FN4B.310.06	MG08.FNEB.310	MW08.FN4B.310	
340	MN08.FN4B.340	MN08.FN4B.340.06	MG08.FNEB.340	MW08.FN4B.340	
370	MN08.FN4B.370	MN08.FN4B.370.06	MG08.FNEB.370	MW08.FN4B.370	
400	MN08.FN4B.400	MN08.FN4B.400.06	MG08.FNEB.400	MW08.FN4B.400	

PART NUMBERS

8" Trench System - AISI 304

AISI 316L available upon request

bold text with gray background indicates stocked part

End Options	Invert	Outlet End Plate for Double Wall	Fill Plate for Dbl Wall (channel - channel joint)	Fill Plate for Dbl Wall (end of run)
	160		MN08.FN4B.160.03D	MP08.FN4B.160.60
190		MN08.FN4B.190.03D	MP08.FN4B.190.60	MP08.FN4B.190.30
220		MN08.FN4B.220.03D	MP08.FN4B.220.60	MP08.FN4B.220.30
250		MN08.FN4B.250.06D	MP08.FN4B.250.60	MP08.FN4B.250.30
280		MN08.FN4B.280.06D	MP08.FN4B.280.60	MP08.FN4B.280.30
310		MN08.FN4B.310.06D	MP08.FN4B.310.60	MP08.FN4B.310.30
340		MN08.FN4B.340.06D	MP08.FN4B.340.60	MP08.FN4B.340.30
370		MN08.FN4B.370.06D	MP08.FN4B.370.60	MP08.FN4B.370.30
400		MN08.FN4B.400.06D	MP08.FN4B.400.60	MP08.FN4B.400.30

Elbows & Tees	Invert	Plain Tee	Tee with Toggle Tabs	Double Wall Tee	Double Wall Tee with Toggle Tabs
	160		MJ08.FN4B.160	MJ08.FA4B.160	MJ08.FN4B.160.D
190		MJ08.FN4B.190	MJ08.FA4B.190	MJ08.FN4B.190.D	MJ08.FA4B.190.D
220		MJ08.FN4B.220	MJ08.FA4B.220	MJ08.FN4B.220.D	MJ08.FA4B.220.D
250		MJ08.FN4B.250	MJ08.FA4B.250	MJ08.FN4B.250.D	MJ08.FA4B.250.D
280		MJ08.FN4B.280	MJ08.FA4B.280	MJ08.FN4B.280.D	MJ08.FA4B.280.D
310		MJ08.FN4B.310	MJ08.FA4B.310	MJ08.FN4B.310.D	MJ08.FA4B.310.D
340		MJ08.FN4B.340	MJ08.FA4B.340	MJ08.FN4B.340.D	MJ08.FA4B.340.D
370		MJ08.FN4B.370	MJ08.FA4B.370	MJ08.FN4B.370.D	MJ08.FA4B.370.D
400		MJ08.FN4B.400	MJ08.FA4B.400	MJ08.FN4B.400.D	MJ08.FA4B.400.D

Elbows & Tees	Invert	Plain 45deg Elbow	45deg Elbow with Toggle Tabs	Double Wall 45deg Elbow	Double Wall 45deg Elbow with Toggle Tabs
	160		MK08.FN4B.160	MK08.FA4B.160	MK08.FN4B.160.D
190		MK08.FN4B.190	MK08.FA4B.190	MK08.FN4B.190.D	MK08.FA4B.190.D
220		MK08.FN4B.220	MK08.FA4B.220	MK08.FN4B.220.D	MK08.FA4B.220.D
250		MK08.FN4B.250	MK08.FA4B.250	MK08.FN4B.250.D	MK08.FA4B.250.D
280		MK08.FN4B.280	MK08.FA4B.280	MK08.FN4B.280.D	MK08.FA4B.280.D
310		MK08.FN4B.310	MK08.FA4B.310	MK08.FN4B.310.D	MK08.FA4B.310.D
340		MK08.FN4B.340	MK08.FA4B.340	MK08.FN4B.340.D	MK08.FA4B.340.D
370		MK08.FN4B.370	MK08.FA4B.370	MK08.FN4B.370.D	MK08.FA4B.370.D
400		MK08.FN4B.400	MK08.FA4B.400	MK08.FN4B.400.D	MK08.FA4B.400.D

Elbows & Tees	Invert	Plain 90deg Elbow	90deg Elbow with Toggle Tabs	Double Wall 90deg Elbow	Double Wall 90deg Elbow with Toggle Tabs
	160		ML08.FN4B.160	ML08.FA4B.160	ML08.FN4B.160.D
190		ML08.FN4B.190	ML08.FA4B.190	ML08.FN4B.190.D	ML08.FA4B.190.D
220		ML08.FN4B.220	ML08.FA4B.220	ML08.FN4B.220.D	ML08.FA4B.220.D
250		ML08.FN4B.250	ML08.FA4B.250	ML08.FN4B.250.D	ML08.FA4B.250.D
280		ML08.FN4B.280	ML08.FA4B.280	ML08.FN4B.280.D	ML08.FA4B.280.D
310		ML08.FN4B.310	ML08.FA4B.310	ML08.FN4B.310.D	ML08.FA4B.310.D
340		ML08.FN4B.340	ML08.FA4B.340	ML08.FN4B.340.D	ML08.FA4B.340.D
370		ML08.FN4B.370	ML08.FA4B.370	ML08.FN4B.370.D	ML08.FA4B.370.D
400		ML08.FN4B.400	ML08.FA4B.400	ML08.FN4B.400.D	ML08.FA4B.400.D

Misc.	Toggle Lock	MT08.4B	U-Leg for Inv. 160 - 220	MU08.2B.10
	Toggle Lock for Double Wall	MT08.4B.D	U-Leg for Inv. 250-310	MU08.2B.12
	Foam Insert	MF08.0450	U-Leg for Inv. 340-400	MU08.2B.14
	Foam Insert for Double Wall	MF08.0450.D	Plain Catch Basin	MB12.FN4B.650.06
			Catch Basin w/ Toggle Tabs	MB12.FA4B.650.06

PART NUMBERS

12" Trench System - AISI 304

AISI 316L available upon request

bold text with gray background indicates stocked part

			Plain Channel	Plain Channel with Toggle Tabs	Bottom Outlet Channel	Bottom Outlet Channel with Toggle Tabs
	Inlet	Discharge				
1% Sloped Channels	160	190	MC12.FN4B.2998.160.190	MC12.FA4B.2998.160.190	MC12.FN4B.2998.160.190.10	MC12.FA4B.2998.160.190.10
	190	220	MC12.FN4B.2998.190.220	MC12.FA4B.2998.190.220	MC12.FN4B.2998.190.220.10	MC12.FA4B.2998.190.220.10
	220	250	MC12.FN4B.2998.220.250	MC12.FA4B.2998.220.250	MC12.FN4B.2998.220.250.10	MC12.FA4B.2998.220.250.10
	250	280	MC12.FN4B.2998.250.280	MC12.FA4B.2998.250.280	MC12.FN4B.2998.250.280.10	MC12.FA4B.2998.250.280.10
	280	310	MC12.FN4B.2998.280.310	MC12.FA4B.2998.280.310	MC12.FN4B.2998.280.310.10	MC12.FA4B.2998.280.310.10
	310	340	MC12.FN4B.2998.310.340	MC12.FA4B.2998.310.340	MC12.FN4B.2998.310.340.10	MC12.FA4B.2998.310.340.10
	340	370	MC12.FN4B.2998.340.370	MC12.FA4B.2998.340.370	MC12.FN4B.2998.340.370.10	MC12.FA4B.2998.340.370.10
	370	400	MC12.FN4B.2998.370.400	MC12.FA4B.2998.370.400	MC12.FN4B.2998.370.400.10	MC12.FA4B.2998.370.400.10

Neutral Channels	190	190	MC12.FN4B.2998.190.190	MC12.FA4B.2998.190.190	MC12.FN4B.2998.190.190.10	MC12.FA4B.2998.190.190.10
	220	220	MC12.FN4B.2998.220.220	MC12.FA4B.2998.220.220	MC12.FN4B.2998.220.220.10	MC12.FA4B.2998.220.220.10
	250	250	MC12.FN4B.2998.250.250	MC12.FA4B.2998.250.250	MC12.FN4B.2998.250.250.10	MC12.FA4B.2998.250.250.10
	280	280	MC12.FN4B.2998.280.280	MC12.FA4B.2998.280.280	MC12.FN4B.2998.280.280.10	MC12.FA4B.2998.280.280.10
	310	310	MC12.FN4B.2998.310.310	MC12.FA4B.2998.310.310	MC12.FN4B.2998.310.310.10	MC12.FA4B.2998.310.310.10
	340	340	MC12.FN4B.2998.340.340	MC12.FA4B.2998.340.340	MC12.FN4B.2998.340.340.10	MC12.FA4B.2998.340.340.10
	370	370	MC12.FN4B.2998.370.370	MC12.FA4B.2998.370.370	MC12.FN4B.2998.370.370.10	MC12.FA4B.2998.370.370.10
	400	400	MC12.FN4B.2998.400.400	MC12.FA4B.2998.400.400	MC12.FN4B.2998.400.400.10	MC12.FA4B.2998.400.400.10

			Double Wall Channel	Double Wall Channel with Toggle Tabs
	Inlet	Discharge		
1% Sloped Channels	160	190	MC12.FN4B.2998.160.190.D	MC12.FA4B.2998.160.190.D
	190	220	MC12.FN4B.2998.190.220.D	MC12.FA4B.2998.190.220.D
	220	250	MC12.FN4B.2998.220.250.D	MC12.FA4B.2998.220.250.D
	250	280	MC12.FN4B.2998.250.280.D	MC12.FA4B.2998.250.280.D
	280	310	MC12.FN4B.2998.280.310.D	MC12.FA4B.2998.280.310.D
	310	340	MC12.FN4B.2998.310.340.D	MC12.FA4B.2998.310.340.D
	340	370	MC12.FN4B.2998.340.370.D	MC12.FA4B.2998.340.370.D
	370	400	MC12.FN4B.2998.370.400.D	MC12.FA4B.2998.370.400.D

Neutral Channels	190	190	MC12.FN4B.2998.190.190.D	MC12.FA4B.2998.190.190.D
	220	220	MC12.FN4B.2998.220.220.D	MC12.FA4B.2998.220.220.D
	250	250	MC12.FN4B.2998.250.250.D	MC12.FA4B.2998.250.250.D
	280	280	MC12.FN4B.2998.280.280.D	MC12.FA4B.2998.280.280.D
	310	310	MC12.FN4B.2998.310.310.D	MC12.FA4B.2998.310.310.D
	340	340	MC12.FN4B.2998.340.340.D	MC12.FA4B.2998.340.340.D
	370	370	MC12.FN4B.2998.370.370.D	MC12.FA4B.2998.370.370.D
	400	400	MC12.FN4B.2998.400.400.D	MC12.FA4B.2998.400.400.D

	Invert	Blank End Plate	Outlet End Plate	Gasket, EPDM	Weld Spacer
	End Options	160	MN12.FN4B.160	MN12.FN4B.160.03	MG12.FNEB.160
190		MN12.FN4B.190	MN12.FN4B.190.03	MG12.FNEB.190	MW12.FN4B.190
220		MN12.FN4B.220	MN12.FN4B.220.03	MG12.FNEB.220	MW12.FN4B.220
250		MN12.FN4B.250	MN12.FN4B.250.06	MG12.FNEB.250	MW12.FN4B.250
280		MN12.FN4B.280	MN12.FN4B.280.06	MG12.FNEB.280	MW12.FN4B.280
310		MN12.FN4B.310	MN12.FN4B.310.06	MG12.FNEB.310	MW12.FN4B.310
340		MN12.FN4B.340	MN12.FN4B.340.06	MG12.FNEB.340	MW12.FN4B.340
370		MN12.FN4B.370	MN12.FN4B.370.10	MG12.FNEB.370	MW12.FN4B.370
400	MN12.FN4B.400	MN12.FN4B.400.10	MG12.FNEB.400	MW12.FN4B.400	

PART NUMBERS

12" Trench System - AISI 304

AISI 316L available upon request

bold text with gray background indicates stocked part

End Options	Invert	Outlet End Plate for Double Wall	Fill Plate for Dbl Wall (channel - channel joint)	Fill Plate for Dbl Wall (end of run)
	160		MN12.FN4B.160.03D	MP12.FN4B.160.60
190		MN12.FN4B.190.03D	MP12.FN4B.190.60	MP12.FN4B.190.30
220		MN12.FN4B.220.03D	MP12.FN4B.220.60	MP12.FN4B.220.30
250		MN12.FN4B.250.06D	MP12.FN4B.250.60	MP12.FN4B.250.30
280		MN12.FN4B.280.06D	MP12.FN4B.280.60	MP12.FN4B.280.30
310		MN12.FN4B.310.06D	MP12.FN4B.310.60	MP12.FN4B.310.30
340		MN12.FN4B.340.06D	MP12.FN4B.340.60	MP12.FN4B.340.30
370		MN12.FN4B.370.10D	MP12.FN4B.370.60	MP12.FN4B.370.30
400		MN12.FN4B.400.10D	MP12.FN4B.400.60	MP12.FN4B.400.30

Elbows & Tees	Invert	Plain Tee	Tee with Toggle Tabs	Double Wall Tee	Double Wall Tee with Toggle Tabs
	160		MJ12.FN4B.160	MJ12.FA4B.160	MJ12.FN4B.160.D
190		MJ12.FN4B.190	MJ12.FA4B.190	MJ12.FN4B.190.D	MJ12.FA4B.190.D
220		MJ12.FN4B.220	MJ12.FA4B.220	MJ12.FN4B.220.D	MJ12.FA4B.220.D
250		MJ12.FN4B.250	MJ12.FA4B.250	MJ12.FN4B.250.D	MJ12.FA4B.250.D
280		MJ12.FN4B.280	MJ12.FA4B.280	MJ12.FN4B.280.D	MJ12.FA4B.280.D
310		MJ12.FN4B.310	MJ12.FA4B.310	MJ12.FN4B.310.D	MJ12.FA4B.310.D
340		MJ12.FN4B.340	MJ12.FA4B.340	MJ12.FN4B.340.D	MJ12.FA4B.340.D
370		MJ12.FN4B.370	MJ12.FA4B.370	MJ12.FN4B.370.D	MJ12.FA4B.370.D
400		MJ12.FN4B.400	MJ12.FA4B.400	MJ12.FN4B.400.D	MJ12.FA4B.400.D

Elbows & Tees	Invert	Plain 45deg Elbow	45deg Elbow with Toggle Tabs	Double Wall 45deg Elbow	Double Wall 45deg Elbow with Toggle Tabs
	160		MK12.FN4B.160	MK12.FA4B.160	MK12.FN4B.160.D
190		MK12.FN4B.190	MK12.FA4B.190	MK12.FN4B.190.D	MK12.FA4B.190.D
220		MK12.FN4B.220	MK12.FA4B.220	MK12.FN4B.220.D	MK12.FA4B.220.D
250		MK12.FN4B.250	MK12.FA4B.250	MK12.FN4B.250.D	MK12.FA4B.250.D
280		MK12.FN4B.280	MK12.FA4B.280	MK12.FN4B.280.D	MK12.FA4B.280.D
310		MK12.FN4B.310	MK12.FA4B.310	MK12.FN4B.310.D	MK12.FA4B.310.D
340		MK12.FN4B.340	MK12.FA4B.340	MK12.FN4B.340.D	MK12.FA4B.340.D
370		MK12.FN4B.370	MK12.FA4B.370	MK12.FN4B.370.D	MK12.FA4B.370.D
400		MK12.FN4B.400	MK12.FA4B.400	MK12.FN4B.400.D	MK12.FA4B.400.D

Elbows & Tees	Invert	Plain 90deg Elbow	90deg Elbow with Toggle Tabs	Double Wall 90deg Elbow	Double Wall 90deg Elbow with Toggle Tabs
	160		ML12.FN4B.160	ML12.FA4B.160	ML12.FN4B.160.D
190		ML12.FN4B.190	ML12.FA4B.190	ML12.FN4B.190.D	ML12.FA4B.190.D
220		ML12.FN4B.220	ML12.FA4B.220	ML12.FN4B.220.D	ML12.FA4B.220.D
250		ML12.FN4B.250	ML12.FA4B.250	ML12.FN4B.250.D	ML12.FA4B.250.D
280		ML12.FN4B.280	ML12.FA4B.280	ML12.FN4B.280.D	ML12.FA4B.280.D
310		ML12.FN4B.310	ML12.FA4B.310	ML12.FN4B.310.D	ML12.FA4B.310.D
340		ML12.FN4B.340	ML12.FA4B.340	ML12.FN4B.340.D	ML12.FA4B.340.D
370		ML12.FN4B.370	ML12.FA4B.370	ML12.FN4B.370.D	ML12.FA4B.370.D
400		ML12.FN4B.400	ML12.FA4B.400	ML12.FN4B.400.D	ML12.FA4B.400.D

Misc.	Toggle Lock	MT12.4B	U-Leg for Inv. 160 - 220	MU12.2B.10
	Toggle Lock for Double Wall	MT12.4B.D	U-Leg for Inv. 250-310	MU12.2B.12
	Foam Insert	MF12.0450	U-Leg for Inv. 340-400	MU12.2B.14
	Foam Insert for Double Wall	MF12.0450.D	Plain Catch Basin	MB12.FN4B.650.06
			Catch Basin w/ Toggle Tabs	MB12.FA4B.650.06

PART NUMBERS

Adapter Plates - AISI 304

Parts in AISI 316L available upon request **bold text with gray background indicates stocked part**

		Smaller End					
		8"					
		160	190	220	250	280	
Larger End	12"	400	MA4B.08F160.12F400	MA4B.08F190.12F400	MA4B.08F220.12F400	MA4B.08F250.12F400	MA4B.08F280.12F400
		370	MA4B.08F160.12F370	MA4B.08F190.12F370	MA4B.08F220.12F370	MA4B.08F250.12F370	MA4B.08F280.12F370
		340	MA4B.08F160.12F340	MA4B.08F190.12F340	MA4B.08F220.12F340	MA4B.08F250.12F340	MA4B.08F280.12F340
		310	MA4B.08F160.12F310	MA4B.08F190.12F310	MA4B.08F220.12F310	MA4B.08F250.12F310	MA4B.08F280.12F310
		280	MA4B.08F160.12F280	MA4B.08F190.12F280	MA4B.08F220.12F280	MA4B.08F250.12F280	
		250	MA4B.08F160.12F250	MA4B.08F190.12F250	MA4B.08F220.12F250		
		220	MA4B.08F160.12F220	MA4B.08F190.12F220			
		190	MA4B.08F160.12F190				

Smaller End		
8"		
310	340	370
MA4B.08F310.12F400	MA4B.08F340.12F400	MA4B.08F370.12F400
MA4B.08F310.12F370	MA4B.08F340.12F370	
MA4B.08F310.12F340		

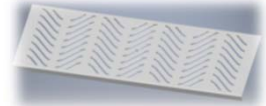
		Smaller End					
		4"					
		130	160	190	220	250	
Larger End	12"	400	MA4B.04B130.12F400	MA4B.04B160.12F400	MA4B.04B190.12F400	MA4B.04B220.12F400	MA4B.04B250.12F400
		370	MA4B.04B130.12F370	MA4B.04B160.12F370	MA4B.04B190.12F370	MA4B.04B220.12F370	MA4B.04B250.12F370
		340	MA4B.04B130.12F340	MA4B.04B160.12F340	MA4B.04B190.12F340	MA4B.04B220.12F340	MA4B.04B250.12F340
		310	MA4B.04B130.12F310	MA4B.04B160.12F310	MA4B.04B190.12F310	MA4B.04B220.12F310	MA4B.04B250.12F310
		280	MA4B.04B130.12F280	MA4B.04B160.12F280	MA4B.04B190.12F280	MA4B.04B220.12F280	MA4B.04B250.12F280
		250	MA4B.04B130.12F250	MA4B.04B160.12F250	MA4B.04B190.12F250	MA4B.04B220.12F250	
		220	MA4B.04B130.12F220	MA4B.04B160.12F220	MA4B.04B190.12F220		
		190	MA4B.04B130.12F190	MA4B.04B160.12F190			
		160	MA4B.04B130.12F160				
	8"	400	MA4B.04B130.08F400	MA4B.04B160.08F400	MA4B.04B190.08F400	MA4B.04B220.08F400	MA4B.04B250.08F400
		370	MA4B.04B130.08F370	MA4B.04B160.08F370	MA4B.04B190.08F370	MA4B.04B220.08F370	MA4B.04B250.08F370
		340	MA4B.04B130.08F340	MA4B.04B160.08F340	MA4B.04B190.08F340	MA4B.04B220.08F340	MA4B.04B250.08F340
		310	MA4B.04B130.08F310	MA4B.04B160.08F310	MA4B.04B190.08F310	MA4B.04B220.08F310	MA4B.04B250.08F310
		280	MA4B.04B130.08F280	MA4B.04B160.08F280	MA4B.04B190.08F280	MA4B.04B220.08F280	MA4B.04B250.08F280
		250	MA4B.04B130.08F250	MA4B.04B160.08F250	MA4B.04B190.08F250	MA4B.04B220.08F250	
		220	MA4B.04B130.08F220	MA4B.04B160.08F220	MA4B.04B190.08F220		
		190	MA4B.04B130.08F190	MA4B.04B160.08F190			
		160	MA4B.04B130.08F160				

PART NUMBERS

Grates

Stainless Wave Style, ADA & Heel Proof, Pedestrian Rated (Load Class A)

	Fits 4" System	Fits 8" System	Fits 12" System
Straight, 1m	04.406A.BB	08.406A.FB	12.406A.FB
Tee	MJG.04.406A.BB	MJG.08.406A.FB	MJG.12.406A.FB
45deg Elbow	MKG.04.406A.BB	MKG.08.406A.FB	MKG.12.406A.FB
90deg Elbow	MLG.04.406A.BB	MLG.08.406A.FB	MLG.12.406A.FB



Stainless Banded Bar Style, Hard Tire Forklift Rated (Load Class E)

	Fits 4" System	Fits 8" System	Fits 12" System
Straight, 1/2m	04.408E.BB	08.408E.FB	12.408E.FB
Tee	MJG.04.408E.BB	MJG.08.408E.FB	MJG.12.408E.FB
45deg Elbow	MKG.04.408E.BB	MKG.08.408E.FB	MKG.12.408E.FB
90deg Elbow	MLG.04.408E.BB	MLG.08.408E.FB	MLG.12.408E.FB



Misc. Straight Grates

(All PolyDrain Grates fit 4" system)

(FRP Grates available for all systems)

(8" and 12" accepts new TrenchFormer Proprietary Width Cast Grates - NOT YET RELEASED)