



The Vintner Vault



3230 Riverside Ave Suite 140 Paso Robles, CA 93446

Ph: (805) 226-8100 Fax: (805) 226-8188

www.TheVintnerVault.com

Athena 25HL Press

Pneumatic press with central elastic membrane “Athena 25”, with the following technical features:

- Tank capacity: 25 hl
- Tubular elastic membrane approved for food applications, supported by inner clevises; thickness: 7.5 mm
- Wholly-pierced stainless-steel tank
- Air compressor for air inlet and outlet
- Self-braking motor reducer for tank rotation
- **Power supply: 230 V – 3 phases – 60 Hz**; maximum requested power: 4 kW
- Rotation transmission by crown, pinion and chain
- **Double door** for tank loading and marcs discharge
- Axial loading with stainless-steel 120-mm ball valve with 4" clamp fitting
- Fixed hanging must-collecting hopper; hopper fitting: 2" clamp
- Central sliding skid for marcs discharge
- Automatic device for must-hopper level control and pump drive
- Side doors on the chassis can be opened
- Inside conveyors for marcs discharge
- Porthole for inspection and washing
- Wheels for press movement
- Washing pipe with nozzles, 1" ball-valve connection

- Electrical board, IP66 protection
- Electromechanical manual commands on a pushbutton control board with cable, actionable while moving around the press; manual command are electromechanical and not managed by the electronic devices
- Automatic pressing cycle controlled by PLC and colour touch-screen operating panel by Omron. Simple, flexible and robust program, allows, amongst else:
 - to visualize cycle parameters and state of the process
 - to add customized programs
 - to execute special programs like Cremant
 - to have options like skipping phases, repeating phases etc.
 - to manage automatically marcs discharge
 - to shift among different languages (including English and Spanish)

- Main sizes: length: m 4.0; width: m 1.65; height: m 2.35 (including 330 mm raising legs); weight: 1,300 kg
- Entirely built in first-rate AISI 304 stainless steel



The Vintner Vault



3230 Riverside Ave Suite 140 Paso Robles, CA 93446

Ph: (805) 226-8100 Fax: (805) 226-8188

www.TheVintnerVault.com

Productivity

ATHENA 25	Loading capacity	Average daily production (*)
Whole grapes (door loading)	1700-2100 kg	11500 kg
Whole grapes (axial loading)	2400-3000 kg	14500 kg
destemmed-destalked grapes	4300-5700 kg	24000 kg
Fermented grapes (tank capacity)	100-120 hl	75000 l
apples (chopped)	2150-2850 kg	8000 kg

(*) assuming about 10 working hs/day

ATHENA

(picture slightly differs from actual product)





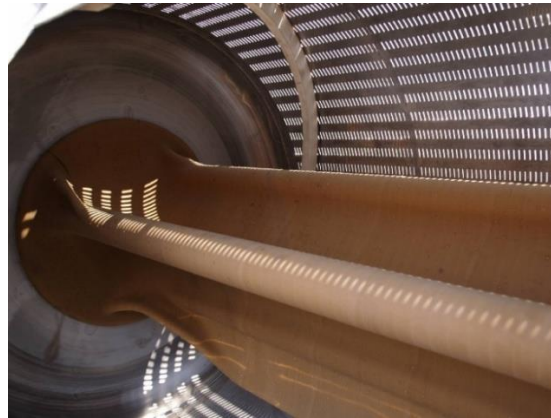
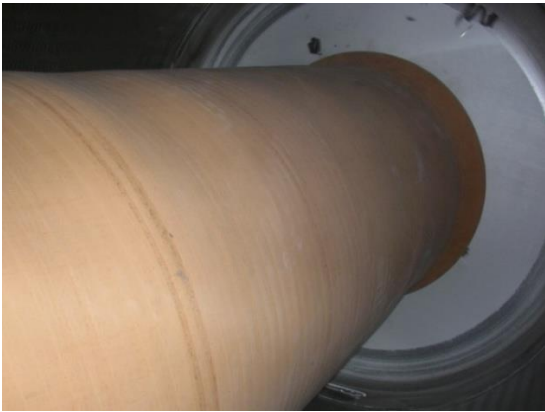
The Vintner Vault



3230 Riverside Ave Suite 140 Paso Robles, CA 93446

Ph: (805) 226-8100 Fax: (805) 226-8188

www.TheVintnerVault.com



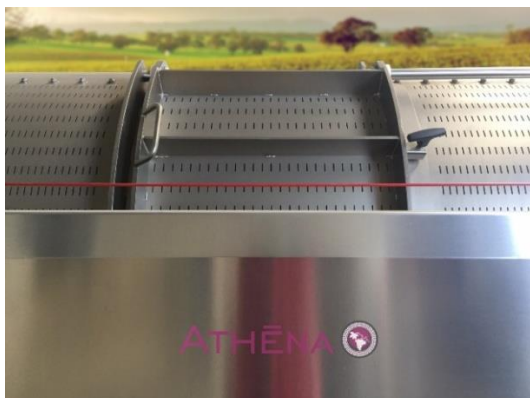
Tubular elastic membrane in natural rubber



Control board with touch-screen, IP66 protection



Electromechanical manual commands on a pushbutton control board with cable



Tank door, for grapes loading and marcs discharge



Stainless-steel loading ball valve, \varnothing 120 mm



The Vintner Vault



3230 Riverside Ave Suite 140 Paso Robles, CA 93446

Ph: (805) 226-8100 Fax: (805) 226-8188

www.TheVintnerVault.com



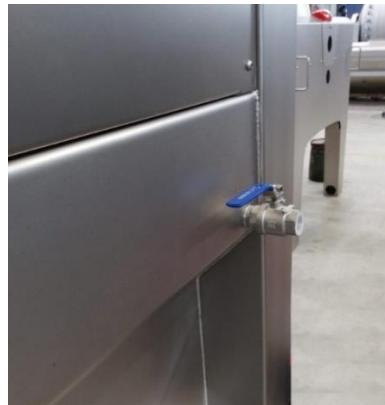
Stainless-steel conveyors for marcs discharge



Whole-tank-length must-collecting hopper on wheels



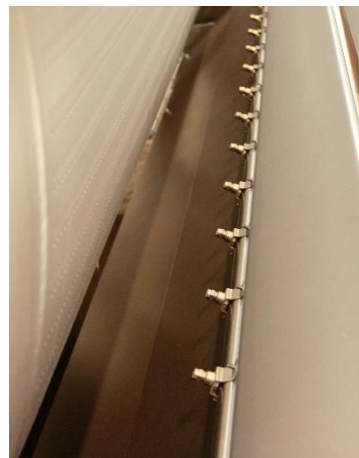
Must hopper level control



1" ball-valve connection for the washing pipe



Washing pipe



Washing nozzles



The Vintner Vault



3230 Riverside Ave Suite 140 Paso Robles, CA 93446

Ph: (805) 226-8100 Fax: (805) 226-8188

www.TheVintnerVault.com

HL 25

Price:.....\$47,500.00*

Pre-Harvest Sale Price\$46,500.00*

TERMS AND CONDITIONS:

- Prices are for goods FOB Paso Robles CA
- Applicable taxes Extra
- Payment: 50% Down 50% Prior to Delivery
- Shipping: Not Included in this Quote
- Delivery time: To Be Agreed

This quotation automatically expires 30 days from January 25, 2021

We hereby offer to purchase the item(s)

Described above under the general

Please use our purchase order No.....

Date.....

Company.....

Signature.....

Prepared by Larry Reeves