



# COLLARD®

## PROFILMATIC® VINE TRIMMERS



*Model P2200S Shown*

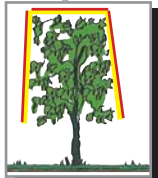
COLLARD designed the first vine trimmers and continues to be the World leader in vine trimmers. The heart of the COLLARD Trimmers is the unique lightweight aluminum alloy extrusion that provides a rugged, rust-proof framework for the cutting blades. This blade framework is so strong that it has a **lifetime guarantee**. The unique saber shaped, non-clogging stainless steel blades never need sharpening. Our trimmers eliminate excess vine growth, open canopies for better air circulation and greatly improve spray and dust penetration.

We have a complete line of machines available for trimming one half row, two half rows, one or two complete rows. Also, if none of our standard models fit your requirements, custom built models are available.

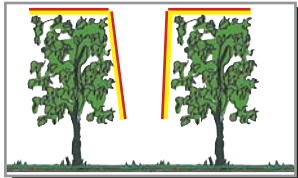
1 half row



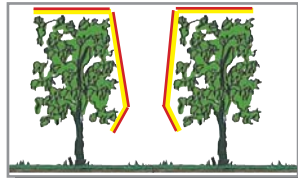
1 complete row



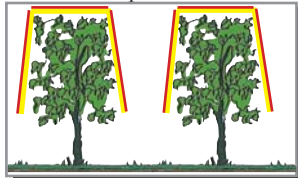
2 half rows



2 half rows w/skirts



2 complete rows



Marketed By:

**GEARMORE INC.**

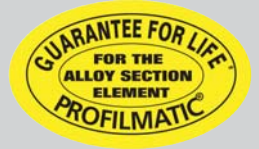
13477 Benson Ave. • Chino, CA 91710 • Ph: 909/548-4848 • Fax: 909/548-4747

[www.gearmore.com](http://www.gearmore.com)



# COLLARD®

# UNIQUE FEATURES



## DESIGNED FOR TRIMMING

The aerodynamic shape of this profiled body was designed to facilitate more efficient penetration of the Trimmer **PROFILMATIC®** into the canopy, this profile also improves the fluid discharge of cut material.

## RIGID BLADE ELEMENT (COLLARD patent)

This extreme duty assembly is nearly indestructible due to the unique design. This unit is without equal and guarantees the reliability of the blade transmission.

## PROTECTED TRANSMISSION

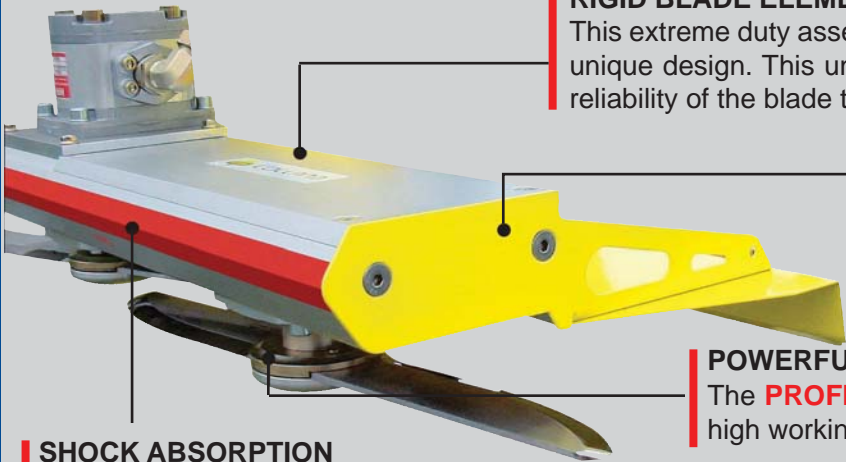
Enclosed by a special cover, the transmission is completely protected against debris, dust, rain, etc.

## POWERFUL TRANSMISSION

The **PROFILMATIC®** is even more powerful, ensuring a very high working speed yet reducing the required power input.

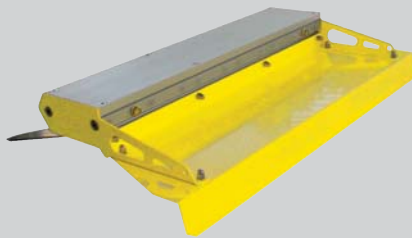
## SHOCK ABSORPTION

The leading edge of this section is made of synthetic material, it absorbs possible shocks, recessed screws of connection between the modules, ensures a smoother profile which facilitates the smooth evacuation of cut material.



## HYDRAULIC POWER

Only modern hydraulic drive technology can provide high power transmission for trimming with exceptional reliability and durability.



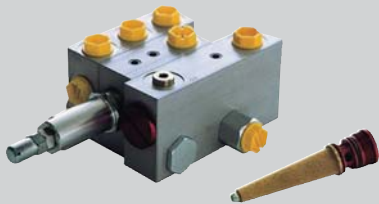
## SAFETY GUARDS

The **PROFILMATIC®** has a one piece rigid deflector, providing additional strength, offering complete protection and conformity of the applicable safety norms.



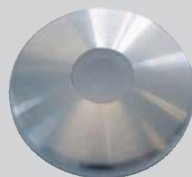
## JOYSTICK

**NEW** Compact "user friendly" controls.



## EXCEPTIONAL HYDRAULIC COMPONENTS

Trimmer motors, distributor, etc. are all fitted with 60 micron oil filters for maximum protection. Special flow divider regulate the maximum speed of the blades. All settings are sealed at the factory for reliability.



## BLADE SAFETY COVERS (COLLARD patent)

Designed to remove the contact of the moving parts with the vegetation, it safeguards the quality of cut. Providing extra security to blade attachment, an added safety feature.



## TOP ADJUSTMENT (Optional)

The height adjustment of the top cutting element is independent to the vertical cutting element.



## COLLARD OFFERS THE MOST COMPLETE RANGE OF VINE TRIMMERS



Model P1100  
Trims Half Rows



Model P3000 LZP  
Trims 1 Complete Row



Model P2200  
Trims 2 Half Rows



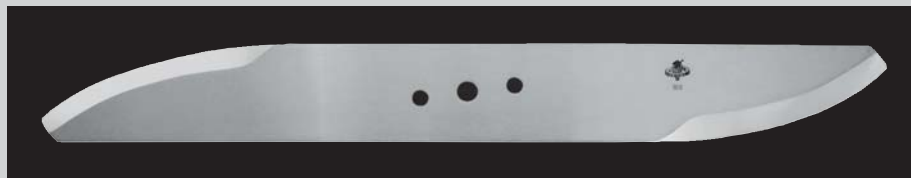
Model P2200S  
Trims 2 Half Rows, Plus Skirts



Model P2200T  
Trims 2 Half Rows, Terraced Vineyard



Model P3200I  
Trims 2 Complete Rows



The COLLARD patented stainless steel blades have a saber profile edge that maintains the high velocity over the length of the cutting edge. The blades cut up to 1/2 inch thick vines and limbs, is rustproof, self-cleaning, and never needs sharpening.



# COLLARD®

# HISTORY, QUALITY CONTROL FEATURES & SPECIFICATIONS

## STANDARD FEATURES

- Heavy duty modular frame construction
- Vertical breakaway system to protect the trimmer and tractor
- Flow limiter for motor controls
- "State of the Art" hydraulic motors to insure long life
- Smooth, thin line blade transmission for easy movement through the foliage
- Rigid deflectors so cut material is thrown away from the operator
- Wide range of adjustments for setting trimmers to operator's exact requirements
- Most operators are confidently operating the trimmer at 6 miles per hour
- Strong, but lightweight and easy to operate
- Blades turn at 2200 R.P.M., ensures clean cane ends, which dry and seal neatly to reduce the risk of disease
- Machine runs smooth and quiet, with no vibration
- Equipped with electro-hydraulic joystick controls for precise trimmer adjustments
- High speed stainless steel blades, self cleaning and never need sharpening
- Hydraulic cylinders are fitted with load/hold check valves for safety in case a hose fails
- Trimmers come with all hoses, fittings & JIC couplers

## HISTORY

The COLLARD family has been servicing wine growers for 5 generations. Andre Collard invented the first mechanical vine trimmer in 1962. Since that development COLLARD has made numerous improvements and continues to be the world leader in trimmers.

## QUALITY CONTROL

Every stage in the production process is controlled to guarantee superior quality. After final assembly, each machine is run through the test bench where everything is checked - rotation speed, operating pressure, hydraulic cylinders, flow rates, etc. All this is done to insure that every machine leaving the factory is in perfect working order.

Your **COLLARD** Dealer

## SPECIFICATIONS

Order Code	Model Number	Rows Trimmed	Vertical Cut	Blades Per Vertical	Row Width Adjustment	Frame Type	Skirts
0134 0400	P1100	1/2 Row	51"	3	D.N.A.	1 Beam	No
0112 0050	P1100Z	1/2 Row	63"	4	D.N.A.	1 Beam	No
0111 0450	P3000LZP	1 Row	63"	4	D.N.A.	1 Beam	No
0113 2400-1504	P2200A	2-1/2 Rows	51"	3	39.3" to 71"	Simple	No
0113 2450-1504	P2200B	2-1/2 Rows	63"	4	39.3" to 71"	Simple	No
0113 0300-1481J	P2200C	2-1/2 Rows	51"	3	49" to 108"	Standard	No
0113 2550-1481J	P2200S	2-1/2 Rows	63"	4	49" to 108"	Standard	Yes
0113 2950-1481J	P2200SR	2-1/2 Rows	63"	4	49" to 108"	Reinforced	Yes
0113-3750	P2200T	2-1/2 Rows	51"	3	49" to 108"	Double	No
0113-3650	P2200TS	2-1/2 Rows	63"	4	49" to 108"	Double	Yes
0114 0300	P3200I	2 Rows	63"	4	Custom	Reinforced	No

*Note: All models have 2 hydraulic driven blades that will cut up to 30.7 inches horizontally, except P1100 cut is 27.5"*