

WE ARE EAGER TO FIND STUDENTS WHO SHARE OUR PASSION TO IMPROVE PEOPLE'S LIVES AND WHO WILL IMMERSE THEMSELVES IN EVERYTHING CAMPBELL MEDICINE HAS TO OFFER. WHILE GRADES AND TEST SCORES ARE IMPORTANT, WE CONSIDER OUR PROSPECTIVE STUDENTS WITH A HOLISTIC APPROACH.

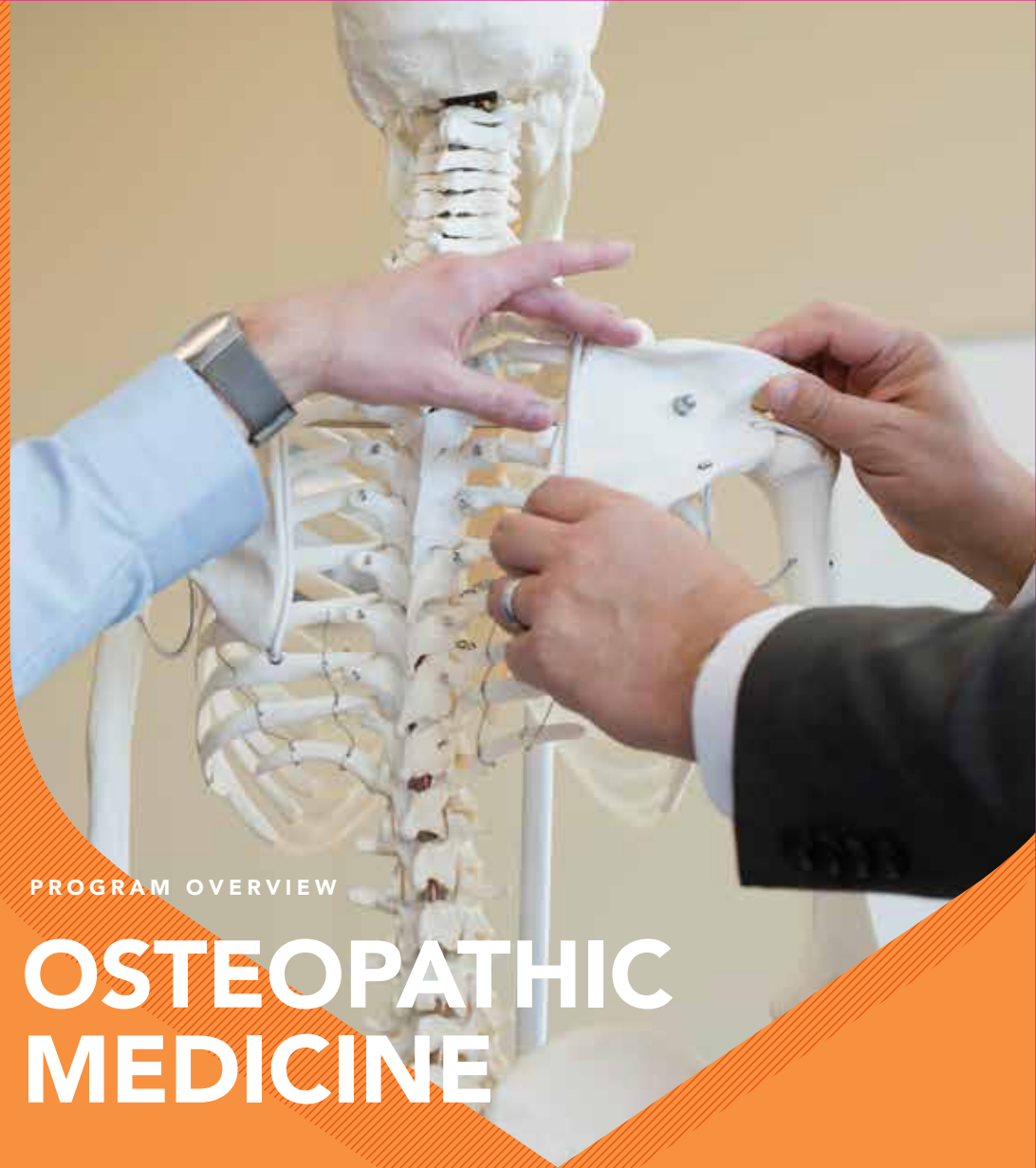
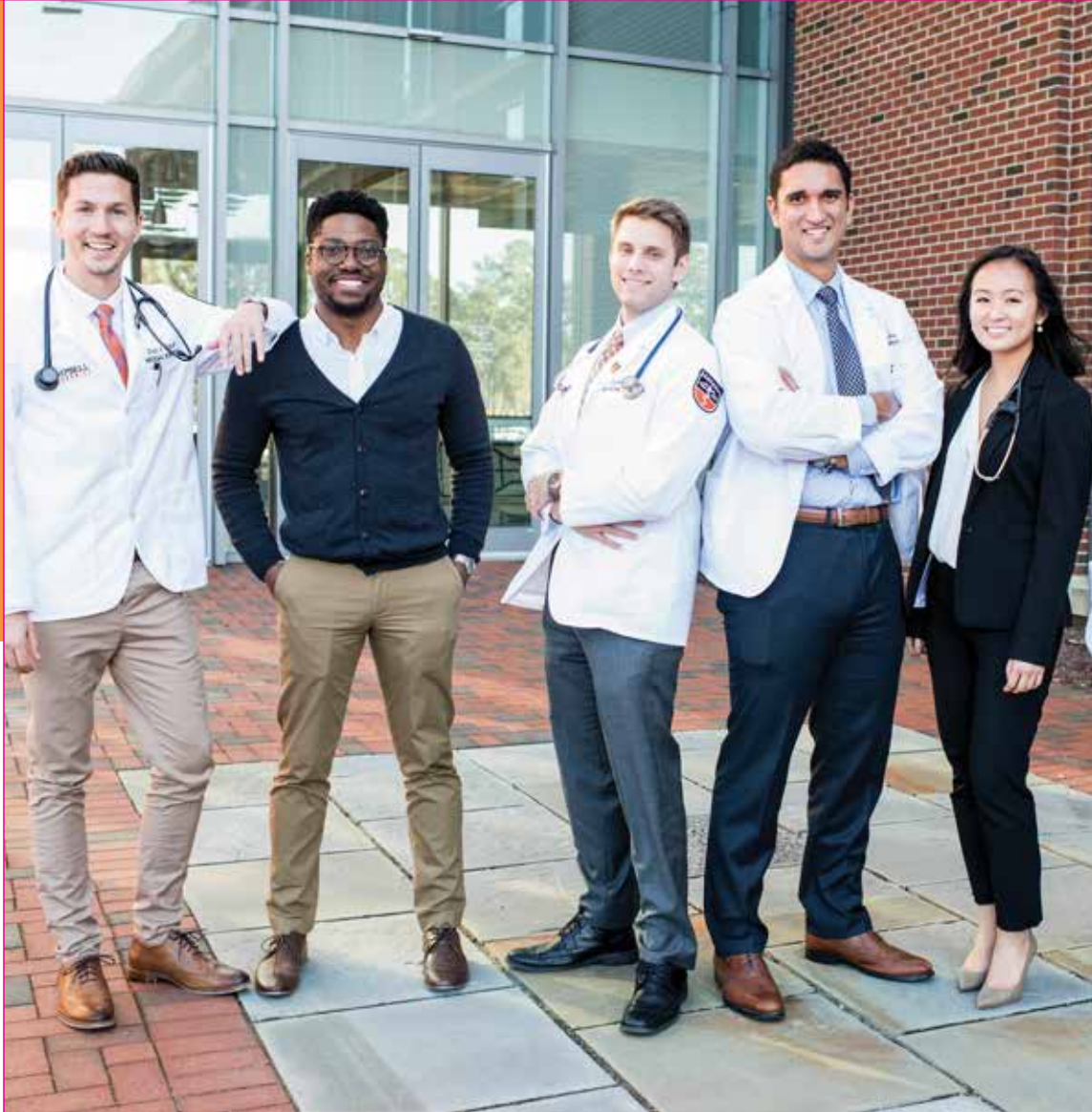
To find out more about our admissions requirements, please visit medicine.campbell.edu/admissions

NO POSTAGE
NECESSARY
IF MAILED
IN THE
UNITED STATES

BUSINESS REPLY MAIL
FIRST-CLASS MAIL PERMIT NO. 1 BUIES CREEK, NC

POSTAGE WILL BE PAID BY ADDRESSEE

OFFICE OF ADMISSIONS
JERRY M. WALLACE SCHOOL OF OSTEOPATHIC MEDICINE
POST OFFICE BOX 4280
BUIES CREEK NC 27506-9909



PROGRAM OVERVIEW

OSTEOPATHIC MEDICINE



4350 US 421 South
Lillington, NC 27546
(855) 287-6613

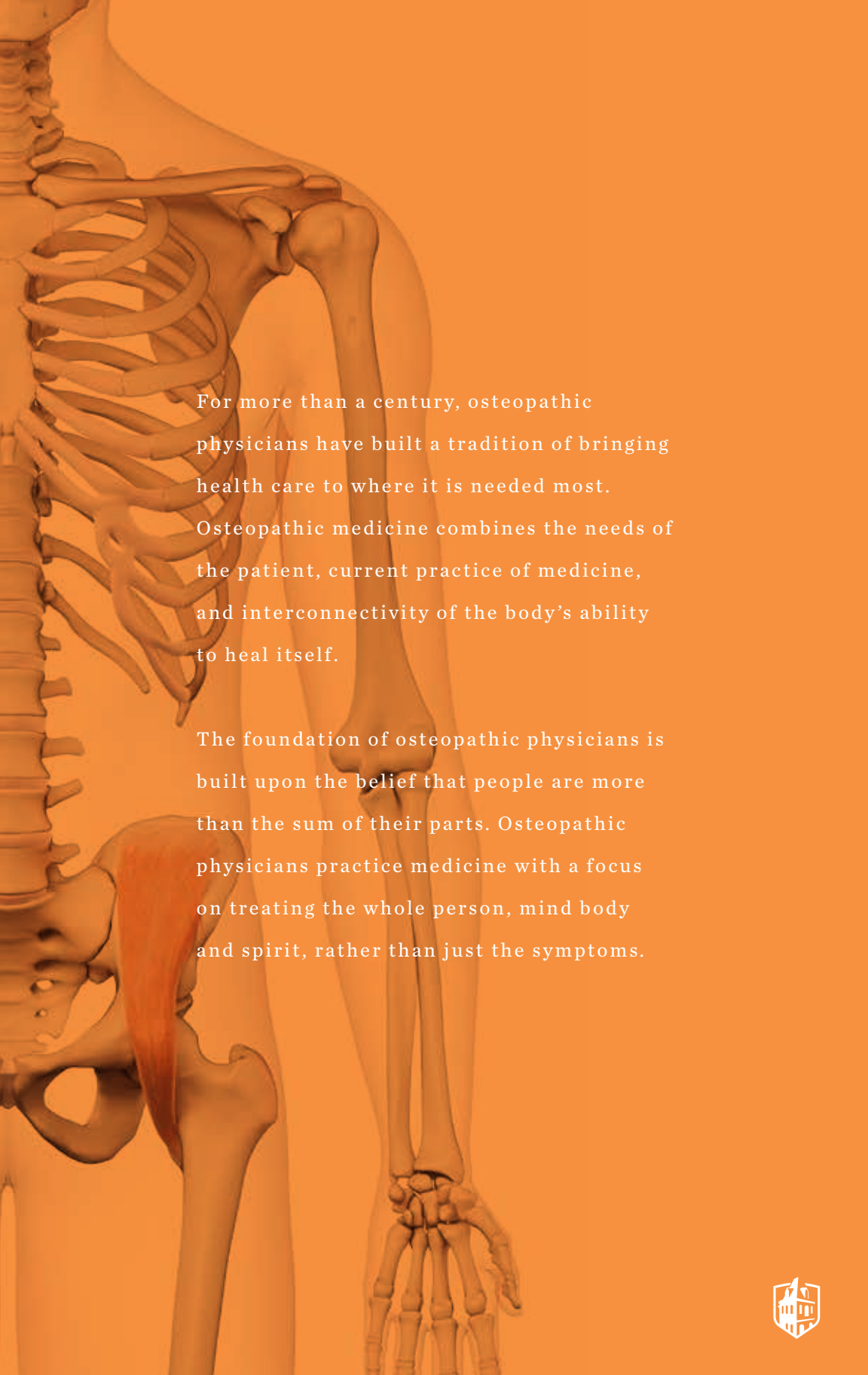
SEE WHAT'S HAPPENING AT #CAMPBELLMEDICINE
MEDICINE.CAMPBELL.EDU/NEWS





TREATING

MIND BODY SPIRIT



For more than a century, osteopathic physicians have built a tradition of bringing health care to where it is needed most.

Osteopathic medicine combines the needs of the patient, current practice of medicine, and interconnectivity of the body's ability to heal itself.

The foundation of osteopathic physicians is built upon the belief that people are more than the sum of their parts. Osteopathic physicians practice medicine with a focus on treating the whole person, mind body and spirit, rather than just the symptoms.



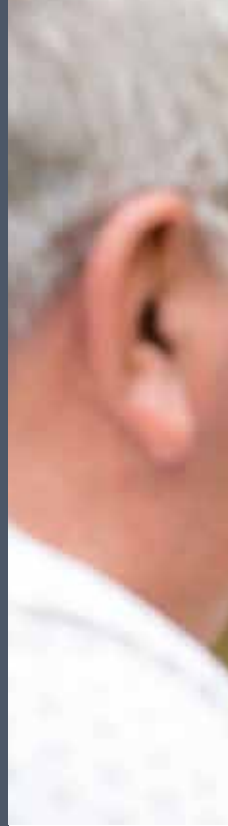
THE

DO

DIFFERENCE

DOs provide osteopathic manipulation medicine, or OMM, in the realm of healthcare. OMM is a popular manual treatment that heals the body and correct faulty function of the musculoskeletal system.

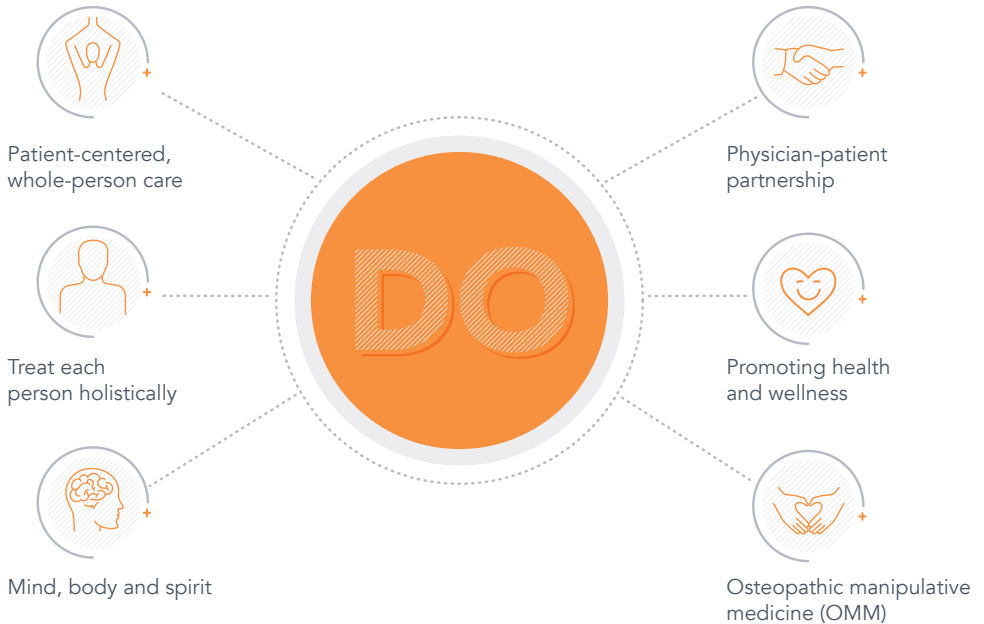
Campbell Medicine offers the education and experience you need to succeed in today's competitive medical field. Our students excel by learning the whole-person approach to delivering superior patient care in the communities they serve. Many alumni of Campbell Medicine go on to fill a critical need.





Why DO?

Same training, same education, different philosophy.



A passion to care for rural and underserved areas is the heart of Campbell University School of Osteopathic Medicine. Through meaningful service, we desire to bring together teams that deliver health care with compassion.

From medical missions to the student-run Community Care Clinic, getting involved in the community is part of our culture.

Our curriculum prepares future health care professionals for the finest internships, residencies and careers.





In every discipline, we treat the whole human by considering physical, environmental and psychological aspects. Our students excel by learning this holistic approach.

Students have access to 25+ organizations and clubs that provide them opportunities to connect, attend conventions, participate in clinical experiences and advocate for the health care profession.

We value diversity, mutual respect, teamwork and open communication.



PROGRAM HIGHLIGHTS

As the first osteopathic medical school established in the state of North Carolina, our faculty prepare students to be lifelong learners and excellent practitioners that are holistic in their approach to patient care.



The only osteopathic school in NC



State-of-the-art Facility

100%

Residency Placement



Our students learn in a state-of-the-art 96,500-square-foot facility known as the Leon Levine Hall of Medical Sciences. Medical students are educated on clinical skills and simulation medicine in the SIM lab, introduced to osteopathic manipulative medicine in our OMM lab, and assigned to regional clinical sites in North Carolina.

Additionally, there are opportunities to engage with our community health centers and serve on medical missions.

We also have a large number of medical students who enter residency specialties such as neurology, family medicine, dermatology, surgery, anesthesiology, psychiatry and many others.





Learn more about our innovative curriculum at medicine.campbell.edu

MEDICAL SCHOOL CURRICULUM

Campbell Medicine's curriculum is designed to provide students necessary skills to pursue careers in primary care or medical and surgical subspecialties.

Our Clinical Skills course provides in depth instruction which encompasses interviewing skills, physical diagnosis, and clinical reasoning. Additionally, students gather in small groups weekly to discuss clinical cases based on the coursework for that week.

The Foundations of Medical Practice Course teaches research methodology, experimental design, biostatistics, evidence based medicine and epidemiology.

The Professional Core Competencies Course addresses medical ethics, humanities, health systems, global health and professionalism.

Considerable emphasis in the curriculum is placed on research.



Campbell Medicine has partnered with several large tertiary care medical centers, hospitals and clinics throughout the Carolina region to provide clinical training opportunities for our students.





YEARS ONE AND TWO

During years one and two the curriculum is highly integrated to provide both a strong core of biomedical principles and a robust foundation in clinical sciences including osteopathic principles, clinical skills, and professionalism. Content is delivered in 9-week blocks over four semesters. The week between blocks allows time for students to have a vacation or participate in medical mission trips.

Blocks one and two cover fundamental basic sciences through a set of courses designed to provide optimal integration while providing clarity on discipline-specific concepts.

Blocks three through eight integrate basic and clinical sciences through an organ system approach, covering the clinical presentations and underlying pathophysiology of common disease states.



YEARS THREE AND FOUR

Students in years three and four train at regional clinical sites throughout North Carolina. Clinical experiences occur within hospitals for inpatient experiences, ambulatory practices and in acute care facilities. All students will spend time in rural and critical access hospitals for an underserved care experience; reflecting the Mission to prepare primary care and specialty physicians for underserved areas while preparing students to enter residency in any field.

We've developed 350+ residency positions in multiple specialties at reputable organizations.



LOCATION & FACILITIES

Just 30 miles from Raleigh/Durham, students experience Leon Levine Hall of Medical Sciences – home to Campbell Medicine. Adjacent to the central campus of Campbell University in Buies Creek, North Carolina, Levine

Hall consists of approximately 96,500 square feet and is designed to accommodate future leaders in the medical field through forms of interactive, hands-on learning environments that simulate realistic clinical experiences.



“With plenty of opportunities for collaboration, we believe the real value isn’t in the sunny spaces or shiny, new facilities. It’s in the strong sense of community that develops when our students work together, learn together and ground themselves in our cultivating atmosphere.”



LEON LEVINE HALL OF MEDICAL SCIENCES

ANATOMY LAB - Our 5,300 sq. ft. anatomy lab is located on the fourth floor and can accommodate over 150 students.

CAFE - Full-service cafe on site to grab coffee, snacks, sushi and even made-to-order meals during study breaks.

MEDICAL LIBRARY - The Medical Library is located on the second floor of Leon Levine Hall and provides faculty and students access to professional medical resources, peer-reviewed medical journals and full-text databases.

OMM LAB - Our 3,635 sq. ft. Osteopathic Manipulative Medicine (OMM) and Clinical Skills Lab is located on the third floor of Levine Hall and can accommodate over 80 students per lab session.

RESEARCH FACILITIES - Students have access to nearly 10,000 sq. ft. of research laboratories on main campus that includes a vivarium and human performance lab. The research center at Tracey F. Smith Hall of Nursing & Medical Sciences is our newest addition and adds approximately 7,000 sq. ft. designated for medical research.

SIMULATION CENTER - The 9,000 sq. ft. Simulation Center is located on the second floor of Levine Hall. It is equipped with 12 Objective Structured Physical Examination (OSCE) suites where learners engage with standardized patients to simulate doctor-patient interactions. It encompasses high fidelity simulation for learners from all of Campbell's health science programs as well as continuing education.

STUDY - Multiple study spaces and interaction areas including 24 small-group rooms equipped with the latest technology to facilitate optimal learning.

STUDENT UNION - a 100,000 square-foot student union will enhance the educational lives of students by blending the academic experience with social opportunities. Expected to be finished fall 2019, it will provide academic support, promote student involvement, foster engagement, offer amenities that enhance campus life and support campus partners.



VISIT CAMPBELL MEDICINE

To learn more about Campbell Medicine, simply return the attached reply card. Even better, take the time to come visit us. Tour Leon Levine Hall of Medical Sciences to experience our positive culture and view our classrooms and facilities that house modern state-of-the-art technology. Meet students, faculty and admissions counselors. To arrange a visit, or if you have any questions, please call our Admissions Office at 855-287-6613.

YES!

*Please send me more information
about Campbell Medicine!*

FIRST NAME

LAST NAME

MIDDLE

DATE OF BIRTH

ADDRESS

CITY

STATE

ZIP

PHONE

EMAIL

COLLEGE NAME

DEGREE RECEIVED Y N