



The Taneja College of Pharmacy has created a program that aims to bridge the gap between nanotechnology and medicine, providing students with advanced knowledge, skills and practical experience within the principles, technology and applications of this exciting and innovative area.

The Master of Science degree in Pharmaceutical Nanotechnology is designed to train students in the skills they will need to understand the burgeoning technological advances in science at the nanoscale and how new nanomaterials and processes can be applied to drug delivery, diagnosis, treatment monitoring, tissue regeneration, personalized medicine, and more.

Nanopharmacy and nanomedicine is a unique interdisciplinary science that integrates the knowledge of natural sciences and engineering with pharmacy and medicine to develop nanopharmaceuticals.

## PROGRAM HIGHLIGHTS

Online, on-campus, and hybrid formats

Can be completed in one year

Start in fall or spring terms

32 credit hours to completion

Multiple academic tracks and concentrations

Opportunity to conduct research

Internships available for selected tracks

## ACADEMIC TRACKS

### GENERAL TRACK

Provides a foundation in pharmaceutical sciences and nanotechnology for students planning to enter a professional program.

### ENTREPRENEURSHIP TRACK

Provides opportunity to complete 1 semester internship. Ideal for students wishing to pursue a career in industry. Prior research experience is required. \*Not available for INTO Pathway students.

### RESEARCH TRACK

Provides opportunity to conduct research in a variety of areas, ideal for students wishing to pursue an advanced degree. Requires completion of thesis.

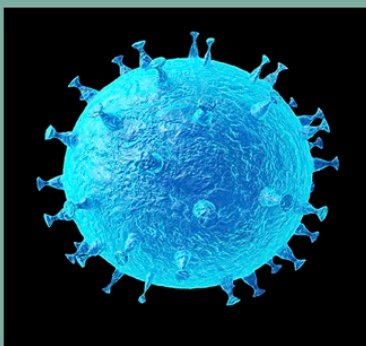
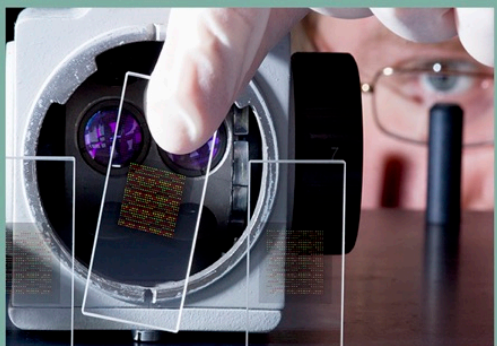
## ACADEMIC CONCENTRATIONS

### DRUG DISCOVERY, DELIVERY, DEVELOPMENT & MANUFACTURING

Provides opportunity to conduct research in the areas specific to D4M. Ideal for students wishing to pursue an advanced degree or enter a career in industry. Requires completion of thesis.

### BIOMEDICAL ENGINEERING

Provides a foundation in pharmaceutical sciences and nanotechnology from an engineering perspective, ideal for those wishing to pursue an advanced degree or enter a career in industry. \*Not available for INTO Pathway students.



## ADMISSIONS REQUIREMENTS

- Bachelor's degree from a regionally accredited institution (or international equivalent), preferably in the sciences
- English Proficiency Examination (if applicable)
- GRE scores (taken within five years, may be waived with overall undergraduate GPA of 3.8 or above, may be substituted with PCAT, MCAT, DAT, or OAT scores)
- Minimum of two letters of recommendation
- Official transcripts from all institutions attended (international transcript evaluations and translation required, if applicable)
- Personal statement
- Resume
- 3.0 or above overall GPA (Applicants with a GPA below 3.0 will be considered on a case by case basis)

**FOR COMPLETE APPLICATION INSTRUCTIONS AND A LIST OF AVAILABLE CERTIFICATE PROGRAMS, PLEASE VISIT:**

**[HTTP://HEALTH.USF.EDU/PHARMACY/GRADUATE-PROGRAMS/](http://health.usf.edu/pharmacy/graduate-programs/)**

**pharmacyadmissions@usf.edu**

**813-974-4562**