

Enhanced Data

Easily add enhanced data to your BATS system from TrackMan, TrackMan Portable, Rapsodo, or FlightScope



Import

- Import complete pitch-by-pitch data for any game or practice session

Sync

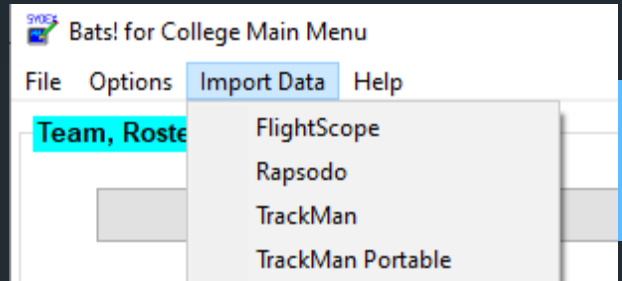
- Sync radar measurements with BATS data and video

Analyze

- Analyze enhanced data and video in BATS reports

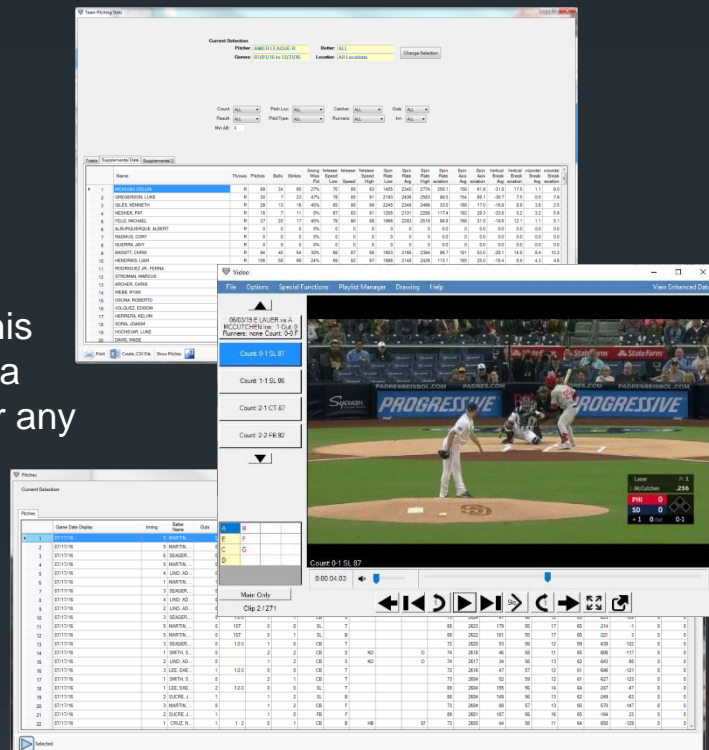
Import and Sync Enhanced Data with BATS

- Easily access the import modules from the BATS software menu
- Select games from a list of files to merge into your BATS database
- Choose which data points to import
- Enhanced data merges seamlessly with existing BATS data and video
- Note: Modules for each third-party data provider are priced separately as an additional one-time set-up fee for standard BATS for College users. All modules come included in the BATS for College Platinum edition.



Analyze Enhanced Data

- Enhanced Pitching and Enhanced Batting reports allow for sorting by radar measurements
- Choose any player to see a list of all his pitches or at-bats along with radar data
- Sort by any column and view video for any pitch



View Enhanced Data with Video

- Anytime you play a clip, select "View Enhanced Data" to display all available data on an additional screen
- In the Options dropdown, select "Enhanced Data Text Display" to choose up to 3 enhanced data metrics to display in the text line of the video player during playback

