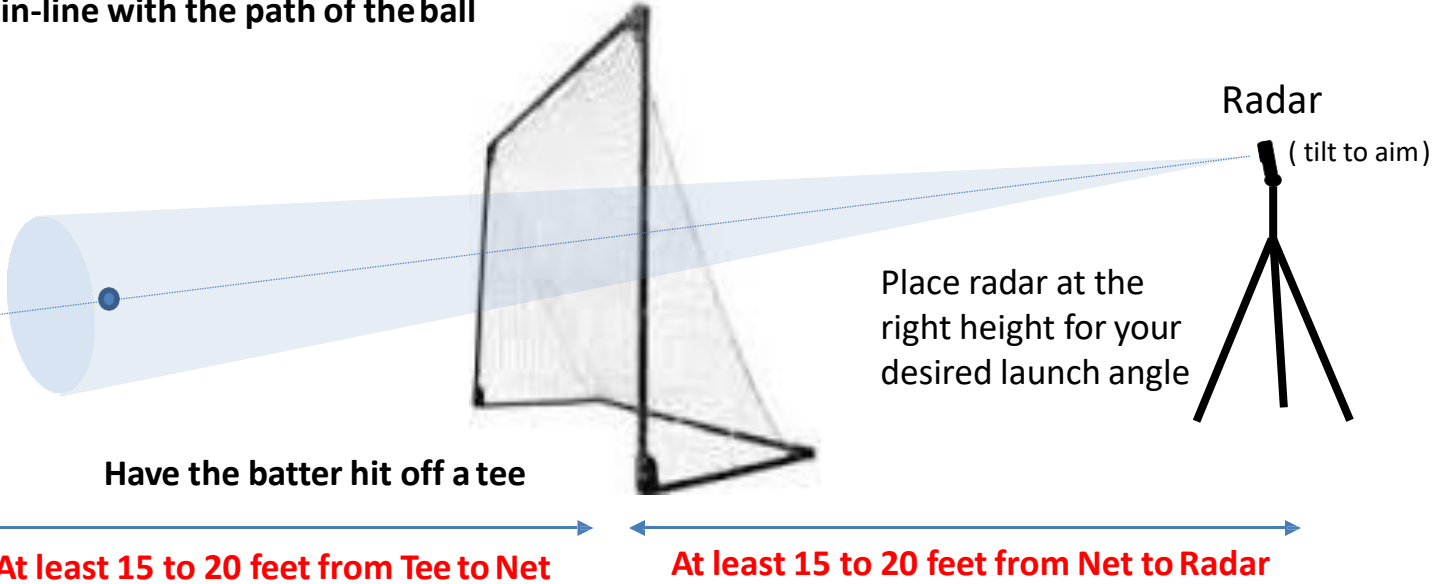


Measuring Ball Exit Velocity with a Ball Coach or Smart Coach Radar

Radar guns create a narrow, focused beam of invisible radio waves. This beam must be aimed directly in-line with the path of the ball

Only count the speeds where the ball goes directly toward the radar



Have the batter hit off a tee

At least 15 to 20 feet from Tee to Net

Place radar at the right height for your desired launch angle

At least 15 to 20 feet from Net to Radar

Have the net or target at least 15 to 20 feet away from the hitter.

(This allows ball to be in flight long enough for the radar to find the ball moving in a straight line.)

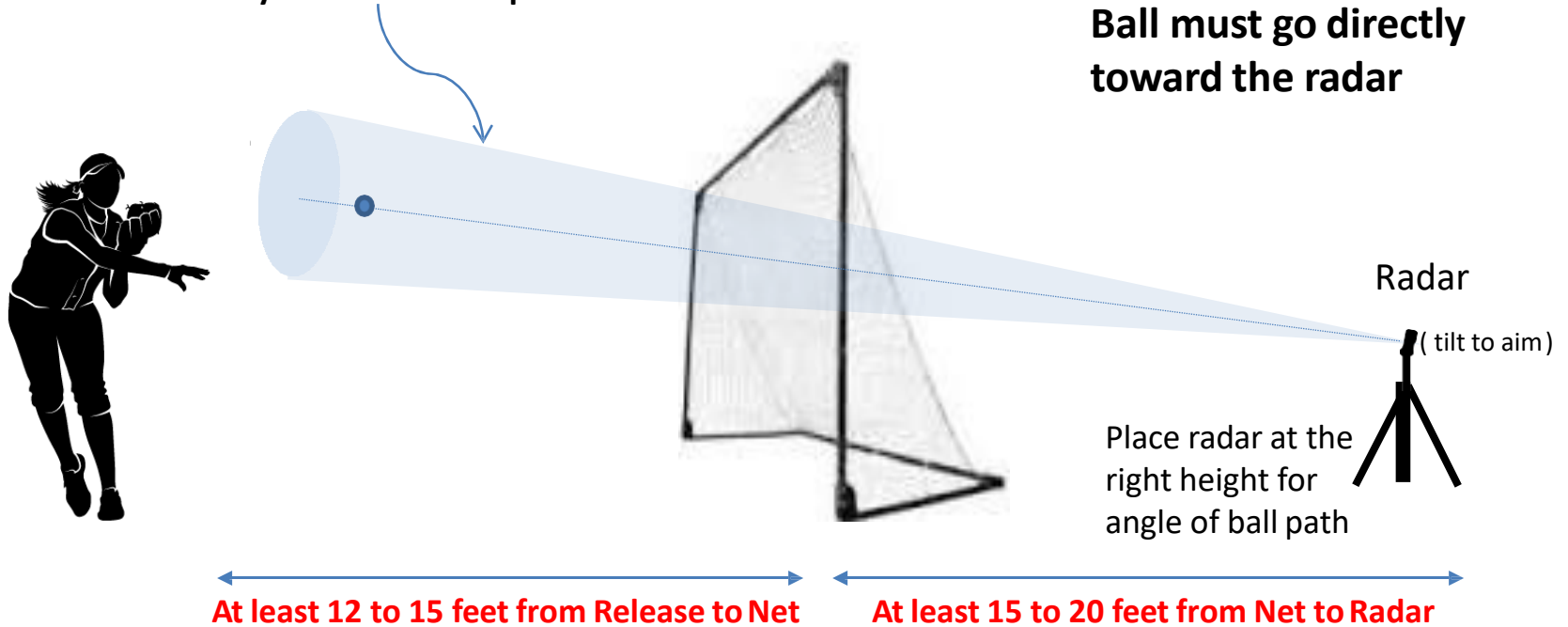
Have the radar 15 to 20 feet back behind the net and aimed at the ball on the tee.

(This allows the spot size of the beam to spread out to make it easier to aim in-line with the path of the ball.)

Measuring Arm Strength Drills with a Ball Coach or Smart Coach Radar

Radar guns create a narrow, focused beam of invisible radio waves. This beam must be aimed directly in-line with the path of the ball

Ball must go directly toward the radar



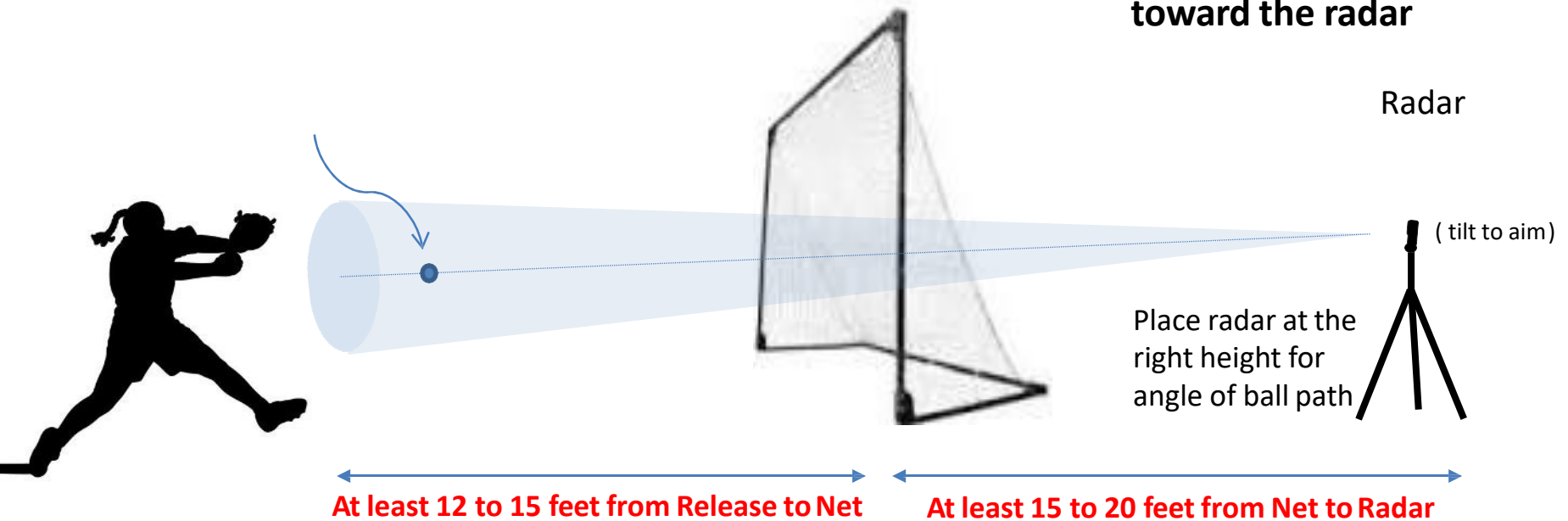
Have the net or target at least 12 to 15 feet away from the release point of the ball.
(This allows ball to be in flight long enough for the radar to find the ball moving in a straight line.)

Have the radar 15 to 20 feet back behind the net and aimed at the release point of the ball.
(This allows the spot size of the beam to spread out to make it easier to aim in-line with the path of the ball.)

Measuring a Softball Pitch with a Ball Coach or Smart Coach Radar

Radar guns create a narrow, focused beam of invisible radio waves. This beam must be aimed directly in-line with the path of the ball

Ball must go directly toward the radar



Have the net or target at least 12 to 15 feet away from the release point of the ball, further is better. (This allows ball to be in flight long enough for the radar to find the ball moving in a straight line.)

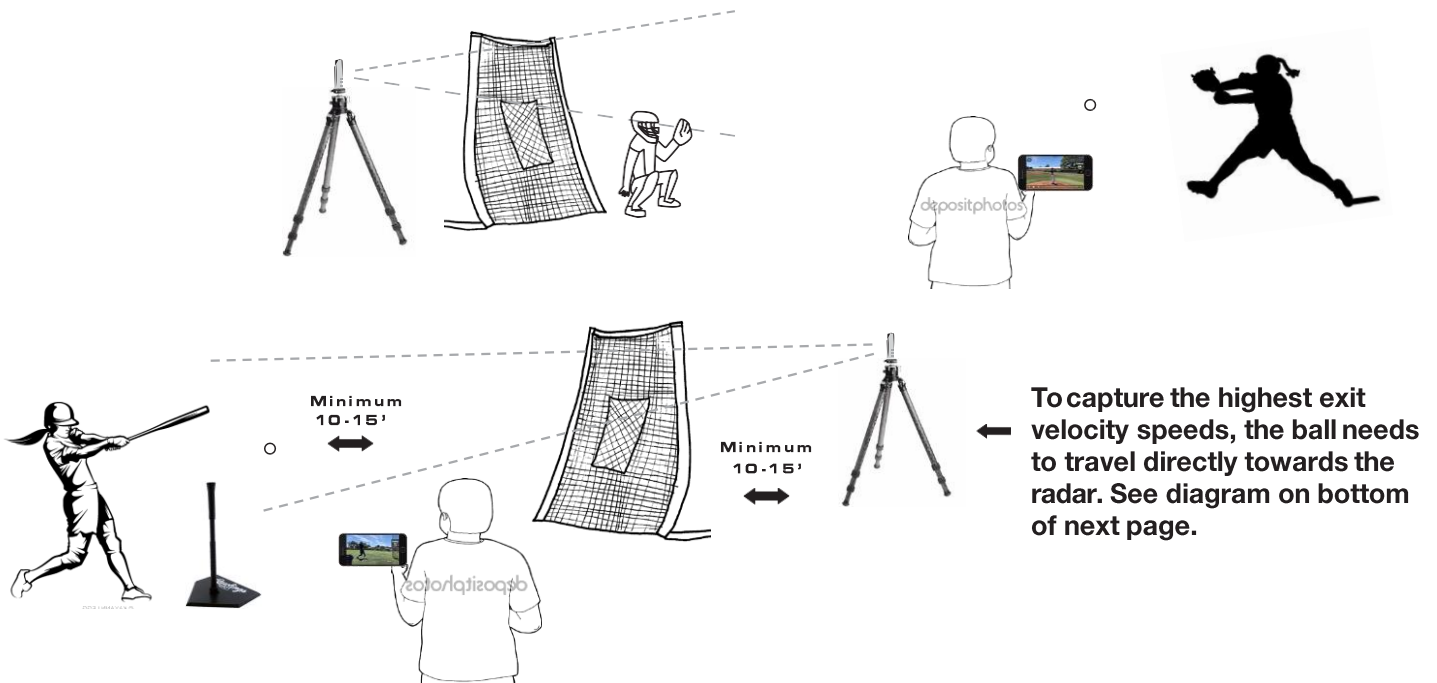
Have the radar 15 to 20 feet back behind the net and aimed at the release point of the ball. (This allows the spot size of the beam to spread out to make it easier to aim in-line with the path of the ball.)

Smart Coach Radar & App Set-Up Instructions

There are many ways you can configure the set-up in regards to the radar gun and device being used with the app to capture the video. Below you will find a few radar set-up illustrations, #1 includes the ideal set-up to capture the video for hitting or pitching.

1. Ideal Radar Set-Up for Pitching or Hitting

Set the radar on a tripod (attached to tripod mount) behind the catcher (for pitching) or behind a net (for hitting) at the other end of the tunnel. This range allows the radar beam to expand and capture the most accurate ball reading (+/-1 MPH) out of the hand or off the bat. Have someone (friend, teammate or family member) off to the side recording the video.

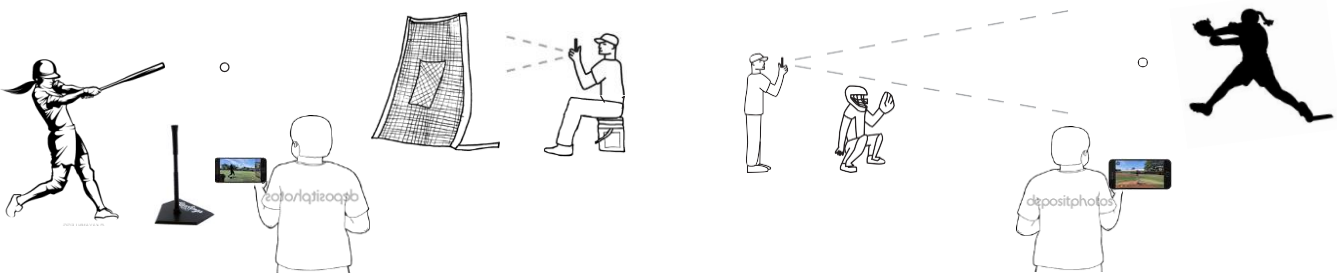


2. Other set-up illustrations to consider if #1 does not work

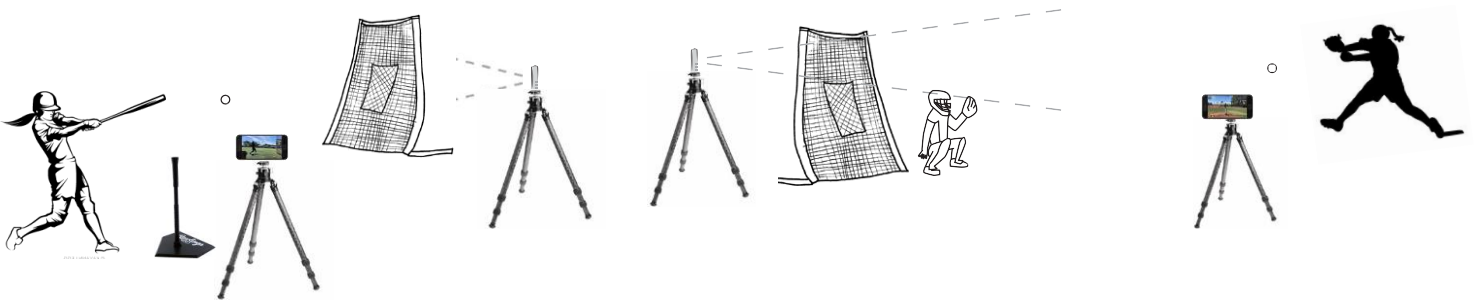
a. Radar is held manually while device is on tripod



b. Radar and phone are both held up manually

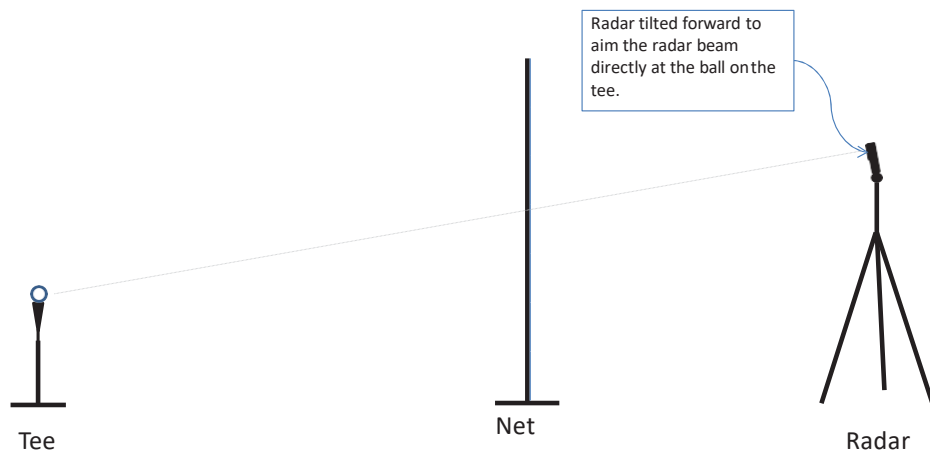


c. Radar and phone are both attached to a tripod



As you have seen by the mockups, there are multiple configurations for using the radar and app successfully. If you have any questions about your set-up, please do not hesitate to give us a call at 888-381-2672 or send us an email with some pics of your facility layout. We want to make sure that we have all of your questions answered. Thanks!

Recommended Radar Set-up for Hitting Target (Radar Behind the Net)



IMPORTANT:

The Exit Velocity must be greater than the bat swing speed for the radar to pick up the ball speed. This should always be the case for a well hit ball.

* Let the Ball travel at least 10-15 feet from the net.