



Performance data you can trust

Tracking radar for
pitching and hitting

FLIGHTSCOPE STRIKE

PORTABLE, NONINTRUSIVE

FlightScope Strike is the only technology on the market that accurately captures both in-game and practice data in an indoor or outdoor environment without impeding play





PORTABLE, NONINTRUSIVE

The only technology that accurately captures in-game and practice data in an indoor or outdoor environment



SCOREKEEPING, TAGGING

Give accurate and contextual meaning to your data using scorekeeping and tagging



YOU OWN THE DATA

FlightScope Cloud provides data visualization and tables to facilitate player development and recruiting



SOFTBALL PORTAL

With an easy post-session upload process, data is translated into detailed reports and charts on FlightScope Cloud



VIDEO INTEGRATION

Action video clips are automatically created from any camera source and uploaded to FlightScope Cloud for review with session data

Additional video integration and storage fees apply

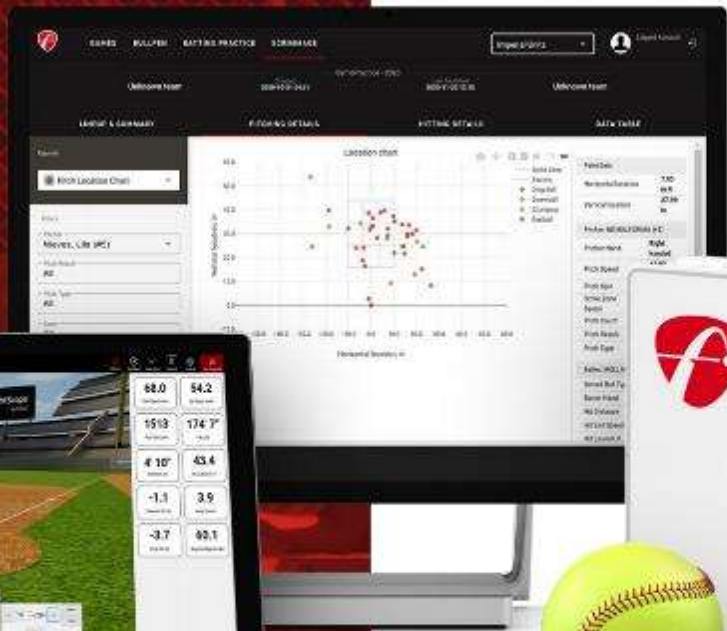
AVAILABLE DATA

PITCHING DATA

- Pitch speed
- Vertical launch
- Horizontal launch
- Spin rate
- Spin direction
- Spin tilt
- Release height
- Release side
- Extension
- Vertical break
- Horizontal break
- Induced break
- Time to plate
- Strike zone location
- Vertical approach angle
- Horizontal approach angle
- Approach pitch speed

HITTING DATA

- Exit velocity
- Launch angle
- Batted ball direction
- Carry distance
- Hang time
- Hit spin



ONLINE REPORTING

Detailed player, game, and team reporting and analysis

The FlightScope Cloud is an online platform that provides users a detailed picture from all softball environments:

- In-game
- Scrimmages
- Batting practice
- Bullpen sessions
- Cage work
- Live at-bats
- and more..



EXTENDED REPORTING ON FLIGHTSCOPE CLOUD



GAME REPORTS

Evaluate team and lineup performance with post-game summaries and in-depth, filterable pitching and hitting results.



PLAYER REPORTS

Analyze player performance with in-depth hitting and pitching reports featuring spray charts, zone maps, and player matchup data.



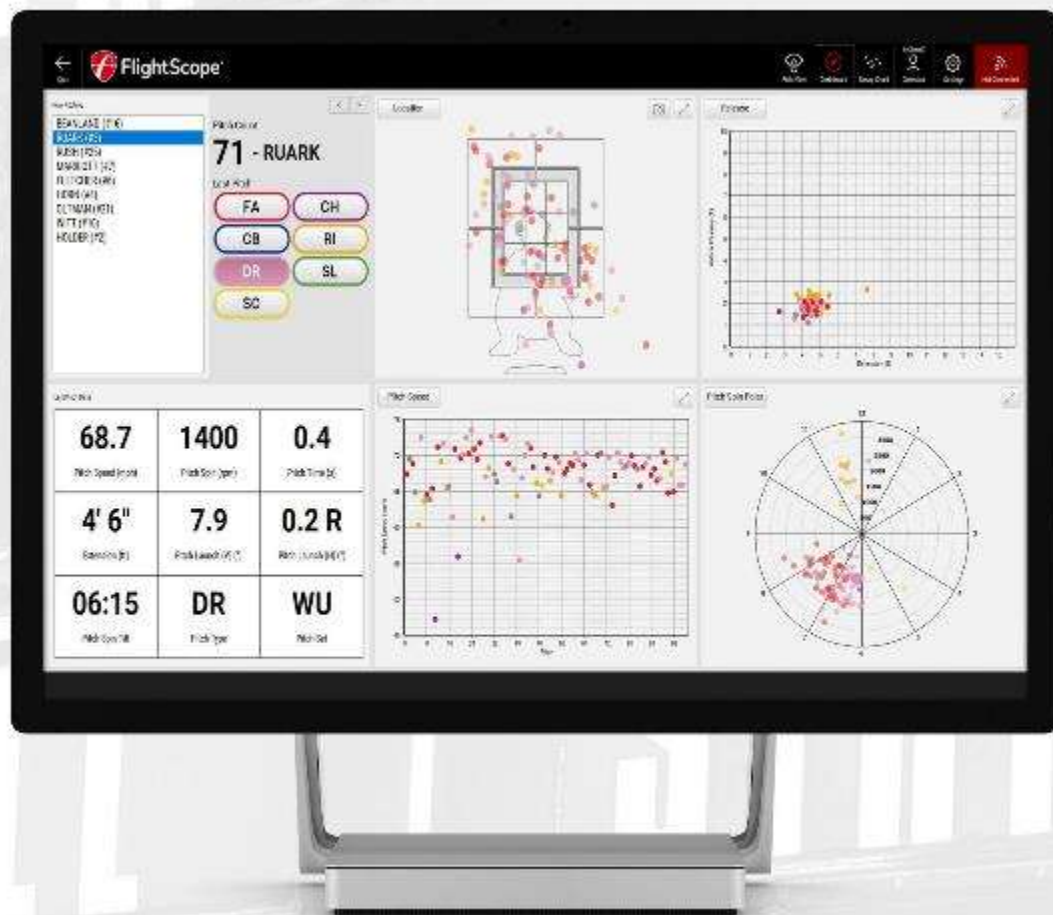
“In an effort to gain a competitive advantage and be one of the leading institutions in college softball in the race for analytics information we were looking for a mobile device that would allow us to gather data on pitch velocity, pitch spin rates, pitch break data, zone location/accuracy, hit exit velocity, hit launch angle, hit carry distance.

With those needs we purchased a FlightScope Strike system.”

Matt Meuchel

UNIVERSITY OF ARKANSAS SOFTBALL

Assistant Coach



IN-GAME AND PRACTICE TRACKING

FlightScope Strike is the only portable in-game tracking system that allows users to measure both pitching and hitting data.



All players can be tagged for post-game review, analysis, and improved player development plans

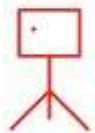


Use in practice sessions both outdoors and indoors, in any environment



All the data within FlightScope software is saved and can be analyzed on FlightScope Cloud

TRIPOD USE



Tripod included for use
in any environment



MOUNTED USE



Multiple mounting options for permanent and semi-permanent installations





We are a technology driven company that is continuously exploring ways to improve our products and services for our customers.

FlightScope is dedicated to the baseball and softball industry and we hope that you will join us on your pursuit of improving performance through technology and data analytics.

Henri Johnson
Founder, CEO





Contact Us

+1 407.967.7121

sales@flightscope.com

Visit Us

softball.flightscope.com



FlightScopeSTBL