



# CHANGE THE *Game*



OFFICIAL  
SPONSOR

REDEFINE

# HOME FIELD *Advantage*



Our goal was simple: design an artificial turf system specifically for softball. But like every road to greatness, creating the perfect surface took time and patience.

We started by testing and analyzing some of the nation's elite clay, grass and turf facilities to study ball-surface interaction, speed and consistency. Then we designed our new series to emulate the best results.

Our journey rewrote the book on testing and product development. Introducing our new softball line, TripleThreat Speed and TripleThreat Natural.

**IF YOU SWING, MAKE IT COUNT.**

TRIPLETHREAT SOFTBALL



“

It's inspiring to see a company devote this much effort to the advancement of softball. I'm proud to partner with FieldTurf on their new TripleThreat softball series because it was created for the benefit of the athlete and of the sport. Finally, there will be a field surface that's designed uniquely for softball. FieldTurf boasts that it's "built on innovation", and now, being part of the process, I can see why it's true. The science, research—hours and technology used in the development of TripleThreat is remarkable. Together, FieldTurf and I are embarking on a mission to Change The Game for softball. Join our team.”

**JESSICA MENDOZA**

- FORMER PROFESSIONAL SOFTBALL PLAYER (ARIZONA HEAT, USSSA PRIDE) & NCAA PLAYER, STANFORD UNIVERSITY
- FOUR-TIME FIRST TEAM ALL-AMERICAN OUTFIELDER
- OLYMPIC GOLD & SILVER MEDALIST

UNIVERSITY OF MONTANA  
GRIZZLY SOFTBALL FIELD

# TECHNOLOGY FUELED OUR PURSUIT OF EXCELLENCE

Our journey had us push the boundaries of testing and product innovation like never before. We used a scientific approach to analyze ball-surface interaction on a variety of systems. Through the use of advanced high-tech motion video cameras, we were able to translate what we found into real-life data. Never before has there been a way to build your FieldTurf softball field with such precision.

USING OUR THREE CRITICAL PERFORMANCE CRITERIA - SPEED, LINE & BOUNCE - YOU CAN BUILD YOUR FIELD TO PLAY FAST OR TO PLAY LIKE A NATURAL SURFACE.



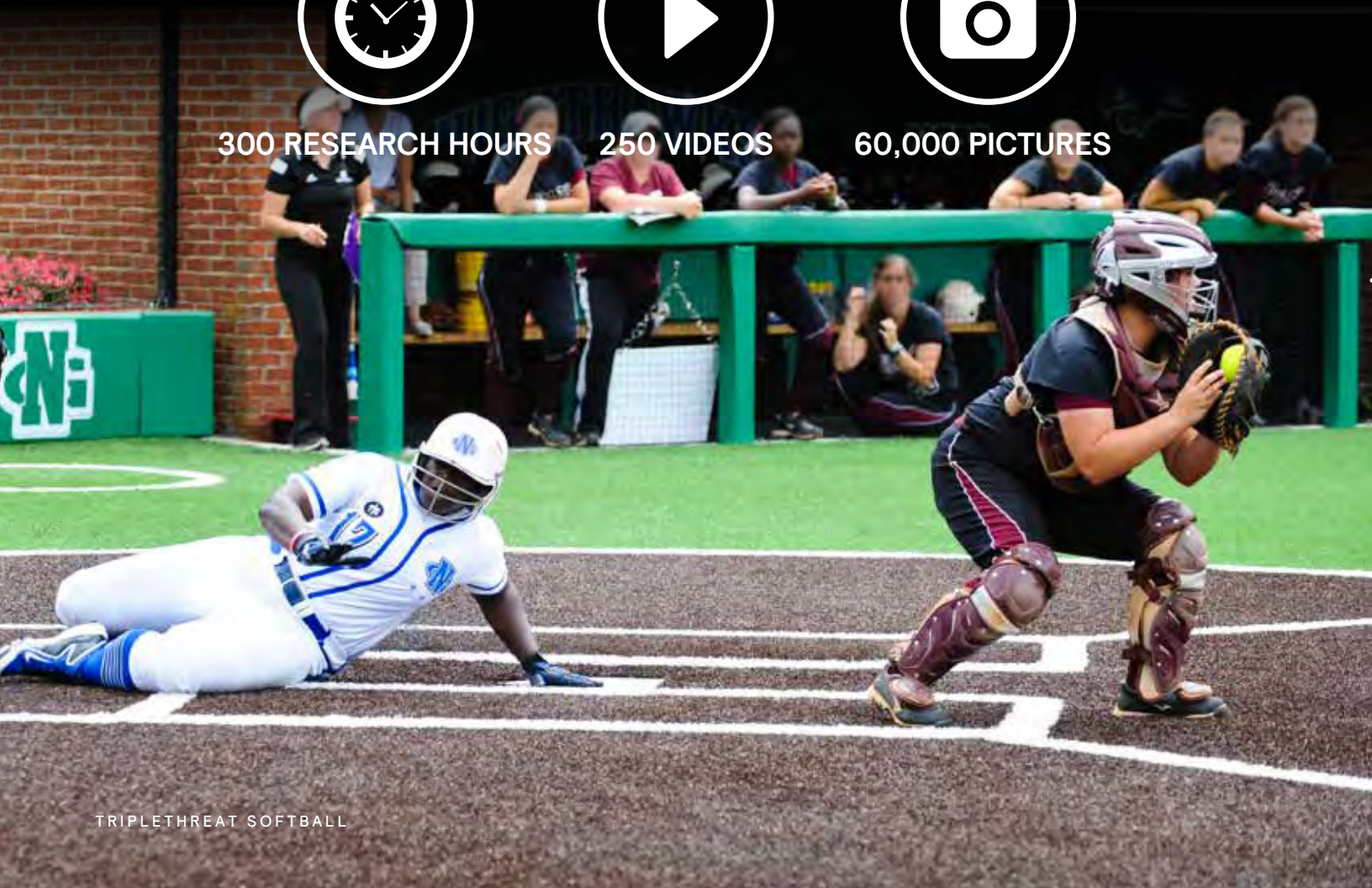
300 RESEARCH HOURS



250 VIDEOS



60,000 PICTURES

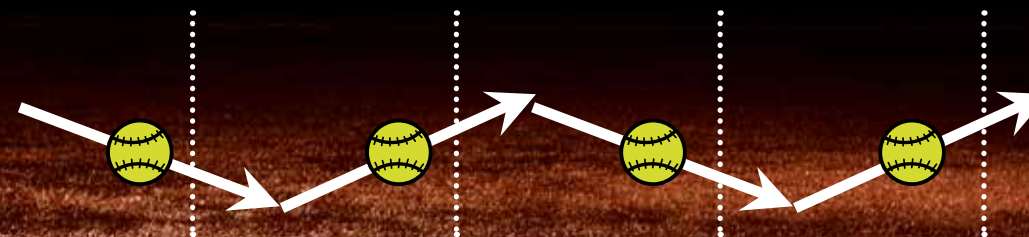


## 1

### SPEED

Speed is a total average of the ball speed-in and ball speed-out at the bounce points. Measured in feet per second.

**WHY IT'S IMPORTANT**  
The *SPEED* score allows you to select a system that either plays fast or plays like a natural surface.

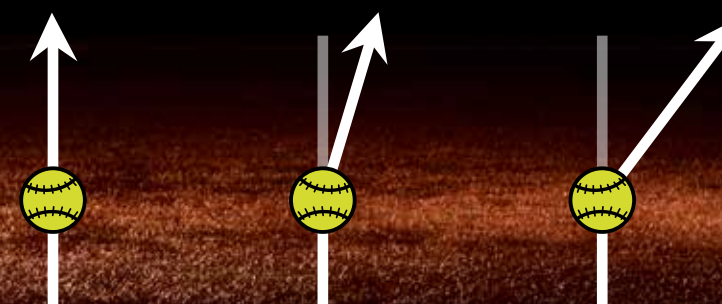


## 2

### LINE

Line is a total average of the ball bounce straightness variation. Measured in degrees.

**WHY IT'S IMPORTANT**  
The *LINE* score indicates if the hop plays true.



## 3

### BOUNCE

Bounce height is a total average of the max height obtained at the bounce points. Measured in feet.

**WHY IT'S IMPORTANT**  
The *BOUNCE* score indicates if the ball plays like a natural surface.



# WHY

## FieldTurf



### VERTICALLY INTEGRATED

FieldTurf controls all aspects of the manufacturing value chain. From start to finish, we're in control of your field.



### EXPERIENCED

With over 20,000 installations worldwide, FieldTurf has been the surface of choice for the last 20+ years.



### LEADING DURABILITY

Manufactured and installed with the highest attention to detail, FieldTurf systems showcase proven durability. There are over 2,000 FieldTurf fields still in use that are 8+ years old.



### FINANCIALLY STABLE

Part of Tarkett Sports, a division of the Tarkett Group, a worldwide leader of innovative flooring and sports surface solutions, FieldTurf has unprecedented financial support and stability. You can rest easy.



### TRUSTED

Regardless of the sport, FieldTurf is the trusted surface of the most elite programs in the world.



### ENDLESS PURSUIT OF INNOVATION

From the original 3-layer infill system; to our SureLock coating drainage application; to our game-changing CoolPlay infill - our innovations continue to change the game.



### SERVICE

We are as committed to your program as you are; and we're with you for the long term. When you buy a field from FieldTurf, you're buying from a company that knows how to take care of you. It's what we do best.



*“Hill Stadium was already one of the premier softball facilities in Division II, but our move to FieldTurf has truly made it one of the best softball stadiums in the country. Our FieldTurf field offered us superior playability and consistency throughout the season.”*

**MIKE DAVENPORT**  
HEAD SOFTBALL COACH, UNIVERSITY OF NORTH GEORGIA



*“The upgrades to DeWitt Family Field will give us an edge in so many ways. Weather is one of our biggest challenges here in the Northeast in the spring, and the turf changes that quite a bit. The number of cancellations we have had over the past few years has been unreal. The frost, the rain, the field prep... The turf will allow us to get on the field in February on those mild days we tend to have. When it comes to a rainy April, the drainage will assure us that no matter how much it rains overnight, we will be able to get onto our field the next day.”*

**JEN GOODWIN**  
HEAD SOFTBALL COACH, YALE UNIVERSITY



*“We love our field! It has been a game changer for us. Our field before wasn't something we showed off to people, so this is a night-and-day difference. I like how every time I go to our field, it is ready to go. There is still maintenance and upkeep of the field, but not like what we had to do in the past. During the installation, I was amazed by how quickly things went and how detailed the work was.”*

**DARREN MUELLER**  
HEAD SOFTBALL COACH, NORTH DAKOTA STATE UNIVERSITY

