

an
INTRODUCTION
to



Integrity

Excellence

Experience

Leadership

SERVING NATIONALLY. BUILDING LOCALLY.

Whiting-Turner // Introduction



OUR MISSION

Build on our reputation for integrity, excellence, experience and leadership as the nation's finest construction organization by:

- Continuously improving the quality of our work and services.
- Constantly striving to exceed each client's expectations.
- Maintaining our dedication to the highest moral principles.
- Providing our people with a challenging, secure and safe environment in which to achieve personal career goals.

OVERVIEW

The Whiting-Turner Contracting Company provides construction management, general contracting and design-build services on projects small and large for a diverse group of customers.

Since 1909, our firm has been guided by the principles of integrity, excellence and an unwavering dedication to customer delight. With our headquarters in Baltimore and 31 regional offices nationwide, Whiting-Turner is currently ranked 2nd in domestic building construction by Engineering News Record (ENR). The firm's over 2,600 salaried professionals provide a depth of resources to service nationally and to build locally.

The strength and stability of the firm is well documented. Whiting-Turner enjoys a 5A-1 Dun & Bradstreet rating – the only top 50 ENR domestic builder with this highest rating and a bonding capacity of \$4 billion. The firm is financially independent, having not borrowed money since 1938.

WHITING-TURNER HISTORY

Since 1909, the mission of Whiting-Turner has been, and still is, to build on our reputation for integrity, excellence, experience and leadership as the nation's finest construction organization.

1
9
0
9



G.W.C. WHITING AND LEBARON TURNER, MIT CLASSMATES, FOUNDED THE FIRM.

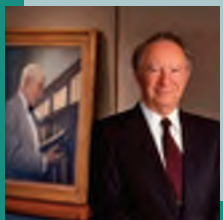
WHITING HIRES WILLARD HACKERMAN, 19-YEAR-OLD CIVIL ENGINEERING GRADUATE OF JOHNS HOPKINS UNIVERSITY.

1
9
3
8



HACKERMAN IS NAMED AS COMPANY'S SECOND PRESIDENT.

1
9
5
5



WHITING-TURNER CELEBRATES 100 YEARS.

2
0
0
9



TIMOTHY REGAN IS NAMED AS COMPANY'S THIRD PRESIDENT.

2
0
1
4



OUR ORGANIZATION

- » Over 2,600 construction professionals nationwide
- » Decentralized structure promotes enthusiasm and accountability
- » Personnel cross-trained in all construction systems and services
- » Project teams supported by specialized corporate services:
 - » Building Information Modeling / Virtual Design and Construction
 - » Mechanical and electrical
 - » Cost engineering and scheduling
 - » Safety

HOW WE WORK

- » Never compromise our integrity
- » Treat every project as a once-in-a-lifetime opportunity
- » Build nationally, hire locally
- » Anticipate, innovate and quietly execute
- » Save money and time
- » Maintain function and design integrity
- » Take quality personally
- » Work safely all the time
- » Empower the project teams
- » Be team players
- » Never miss a deadline
- » Do whatever it takes to delight our customers
- » Use BIM when advantageous

INTEGRITY

EXCELLENCE

EXPERIENCE

LEADERSHIP

INTEGRITY
EXCELLENCE
EXPERIENCE
LEADERSHIP

...THAT'S THE WHITING-TURNER

DIFFERENCE.

Values such as integrity, loyalty, and customer delight—while routinely thrown about without substance in the business community—have always been taken very seriously by our firm. Whiting-Turner's mission statement is the embodiment of these values.



// TIM REGAN, PRESIDENT & CEO //

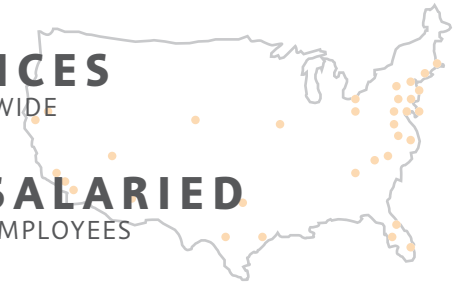


WHITING-TURNER **SNAPSHOT**



31 OFFICES
NATIONWIDE

2636 SALARIED
EMPLOYEES



\$4

BILLION

BONDING
CAPACITY



274 LEED
CERTIFIED
PROJECTS

22 LEED
PLATINUM
PROJECTS

>\$1.8B
DESIGN BUILD

>\$2.5B
CM @ RISK



WHAT WE DO

WELL-QUALIFIED TO BUILD YOUR NEXT PROJECT

Whiting-Turner provides construction management, general contracting and design-build services on projects small and large for a diverse group of customers.

Markets include:

- Healthcare
- Hospitality
- Retail & Entertainment
- Mixed-Use
- Mission Critical
- Sports
- Public Sector
- Senior Living
- Life Sciences
- Infrastructure
- Cultural
- Religious
- Multi-family Residential
- Urban Redevelopment
- Office and Headquarters
- Microelectronics
- Higher Education & K-12
- Industrial
- Warehouse & Distribution
- Transportation



Whiting-Turner was awarded the American Architectural Foundation Keystone Award by the American Architectural Foundation. The award is given to an individual or organization whose portfolio "increases the value of the built environment".

SUCCESS IN THE SOUTHEAST

RECENTLY COMPLETED PROJECTS

Whiting-Turner ranks as one of the top contractors by ENR, ENR Southeast, and BD+C here in the following industries. Here is a snapshot of recent projects completed.

HIGHER EDUCATION



EMORY UNIVERSITY/
GEORGIA INSTITUTE OF
TECHNOLOGY LIBRARY
SERVICE CENTER
ATLANTA, GA

RETAIL



PHIPPS PLAZA
RENOVATION
ATLANTA, GA

ENTERTAINMENT



HARRAH'S CHEROKEE
VALLEY RIVER
CASINO & HOTEL
MURPHY, NC

OFFICE



PORSCHE CARS
NORTH AMERICAN
HEADQUARTERS
ATLANTA, GA

RENOVATION



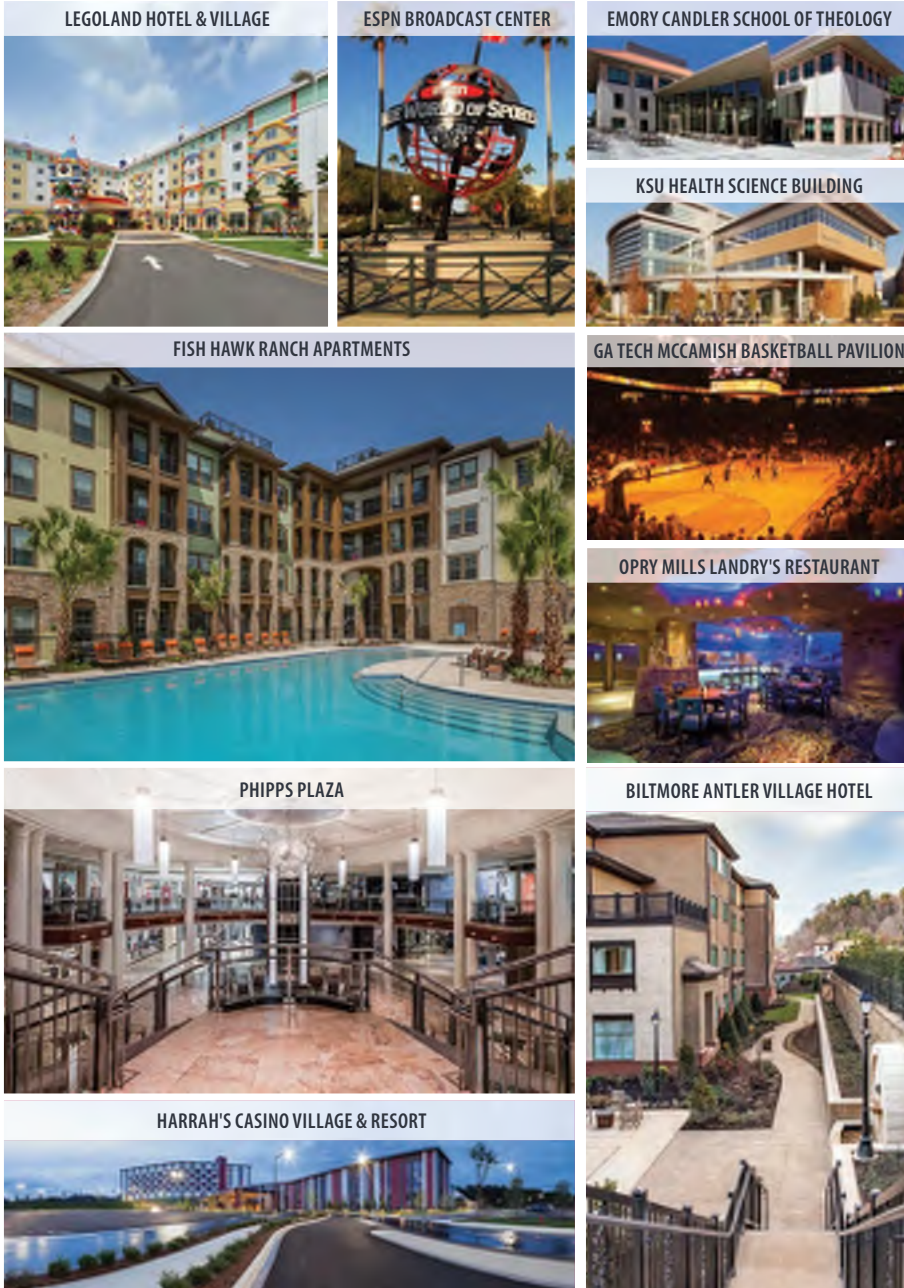
OPRY MILLS MALL
NASHVILLE, TN

HOSPITALITY



ANTLER HILL
VILLAGE HOTEL
ASHEVILLE, NC

SUCCESS IN THE SOUTHEAST



ATLANTA OFFICE

Whiting-Turner's Atlanta office focuses on a select group of industries.

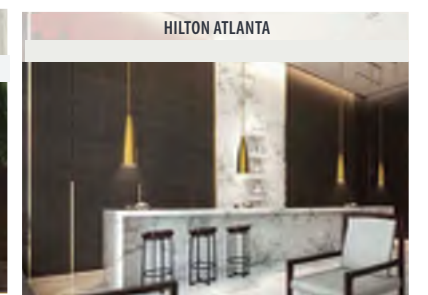
100
LOCAL
CONSTRUCTION
PROFESSIONS

- Higher Education
- Office/Headquarters
- Mission Critical
- Multi-family Residential
- Retail & Entertainment
- Healthcare
- Hospitality
- Sports
- Senior Living
- Transportation
- Manufacturing
- Healthcare

ATLANTA OFFICE ACTIVE PROJECTS

Nationally...

- » University of Kentucky, Research Bldg, Ph II
- » BMW Hall 50 Expansion
- » Crescent Communities, Two Greenway Centre
- » Confidential Mission Critical Project





RETAIL EXPERIENCE



// FEATURED PROJECT //
Gilmcher Realty Trust
Polaris Lifestyle Center & Expansion
Columbus, OH
\$84M

Whiting-Turner // Introduction

“The diligence, integrity, teamwork and commitment to client service and satisfaction consistently demonstrated by the entire Whiting-Turner project staff played a huge role in the successful completion of the Coastland Center redevelopment. I would welcome the opportunity to go into battle with any one of these troops again!”

———— Dean A. Lopez • Formerly with Jones Lang LaSalle Americas, Inc. ————

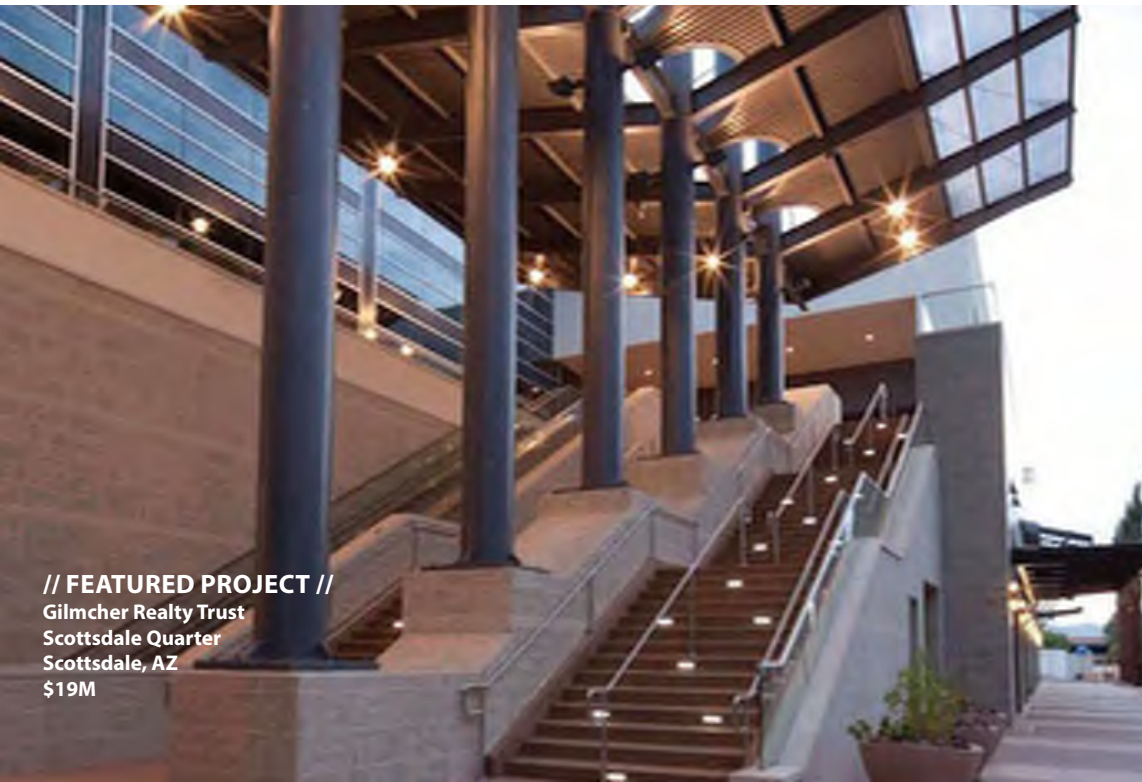
SAMPLE CLIENT LIST

- | | |
|---------------------------------|--------------------------|
| Coca-Cola | JC Penney Company, Inc. |
| Costco Wholesale | Kohl's |
| CVS | Kroger |
| Restoration Hardware | LTD Management |
| Dick's Sporting Goods | Macerich |
| Federal Realty Investment Trust | Macy's |
| Forest City Enterprises | Mall Properties |
| General Growth Properties | Simon Property Group |
| Glimcher Realty Trust | Starbucks |
| Harley-Davidson | Target Corporation |
| Home Depot | Vornado Realty Trust |
| | Walt Disney World Resort |





MIXED-USE EXPERIENCE



// FEATURED PROJECT //
Gilmcher Realty Trust
Scottsdale Quarter
Scottsdale, AZ
\$19M

Whiting-Turner // Introduction

“JKRP Architects recently completed a substantial mixed-use project with Whiting-Turner. Thanks to the entire management team at Whiting-Turner, the finished product and the schedule were never compromised. Their commitment to operating in a team environment and focusing on solutions made it a pleasure to be a part, and we look forward to working with them again.”

Robert McCall, AIA, NCARB, Principal • JKRP Architects

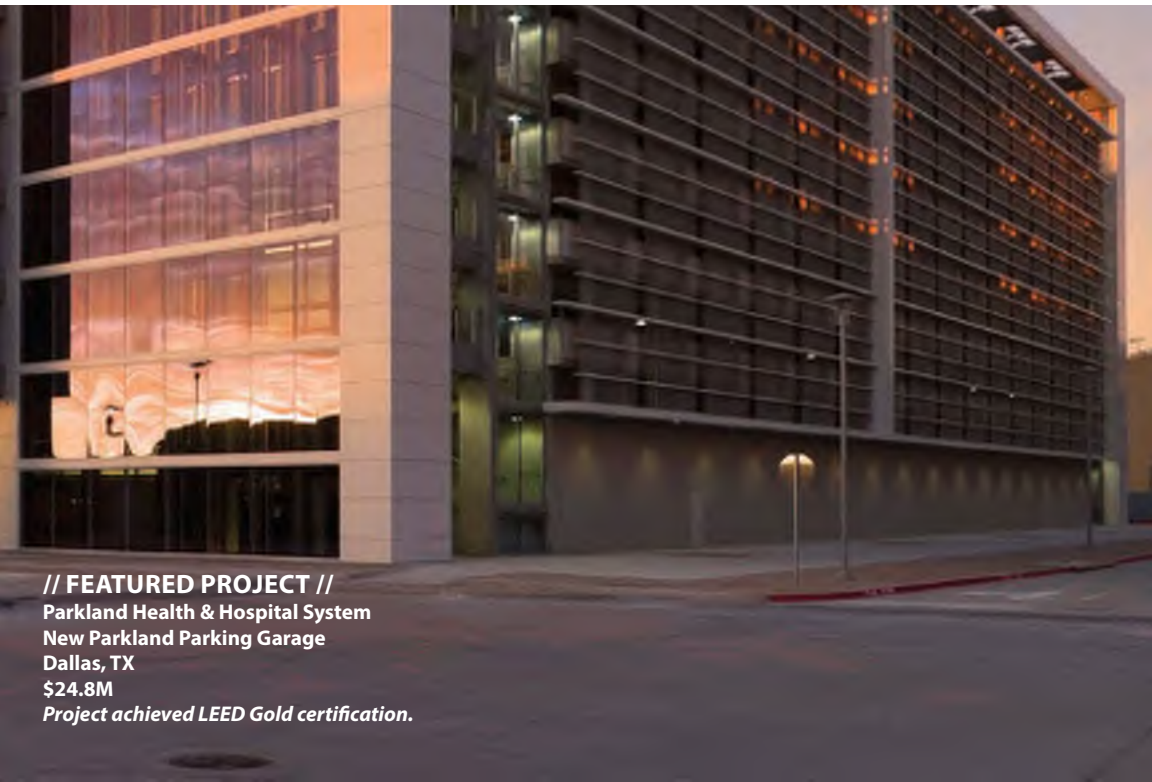
SAMPLE CLIENT LIST

- Caruso Affiliated
- Caves Valley Partners
- Centro Properties Group
- Charter Properties
- City of Rockville
- Equity Residential
- Federal Realty Investment Trust
- Forest City Ratner Companies
- General Growth Properties
- Glimcher Realty Trust
- GreenStone Ventures II, LLC
- HB Nitkin Group
- Jones Lang LaSalle
- Kimco Realty
- Lockwood Associates, LLC
- Macerich
- Petrie Ventures Inc.
- Somerset Construction Company
- Stark Enterprises
- Terra Nova Ventures
- The Howard Hughes Corporation
- The O’Connor Group
- Vornado Realty Trust
- World Market Center Las Vegas





PARKING EXPERIENCE



// FEATURED PROJECT //
Parkland Health & Hospital System
New Parkland Parking Garage
Dallas, TX
\$24.8M
Project achieved LEED Gold certification.

Whiting-Turner // Introduction

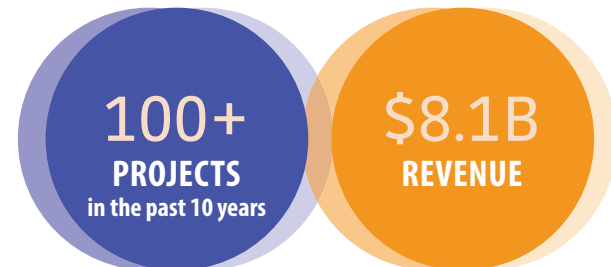
“Knowledge, dedication and expertise were merely three of the key qualifications Whiting-Turner brought to our job. Kennedy Krieger Institute was pleased with the efficient work, time and effort that went into bringing our new parking facility in under budget and ahead of schedule.”

— Kristin R. Jeanneault, Assistant Administrator • Kennedy Krieger Institute —

SAMPLE CLIENT LIST

Federal Realty Investment Trust
The Salvation Army
Jones Lang LaSalle
LifeBridge Health, Inc.
YMCA
General Growth Properties
Target Corporation
Fannie Mae
International Business Machines
Robertson Properties Group
Glimcher Realty Trust

The Irvine Company
Wake Forest Innovations
Hertz
Hines
Costco Wholesale
Cleveland Clinic Foundation
Frito-Lay, Incorporated
OfficeMax
The College of William & Mary
Kaiser Permanente
Chrysler Realty Corporation
City of Las Vegas





OFFICE EXPERIENCE



// FEATURED PROJECT //

Porsche Cars North America
North American Headquarters, Training and Driving Experience Center
Atlanta, GA
\$65M

Project achieved LEED Gold certification and received the following awards:

- 2015 Project of the Year by Construction Management Association of America – South Atlantic Chapter.
- 2015 Project of the Year by ENR Southeast.
- 2015 Best Projects Award, Office/Retail/Mixed-Use by ENR Southeast.

Whiting-Turner // Introduction

“...From our first pre-bid meeting through substantial completion, Whiting-Turner has always been professional and dedicated and shown commitment to the client...2000 Tower Oaks is the first LEED® CS Platinum building in Washington, D.C...Whiting-Turner made this possible by making sure that we achieved every LEED point...”

David Borchardt, Director of Sustainable Development
The Tower Construction Group, LLC

SAMPLE CLIENT LIST

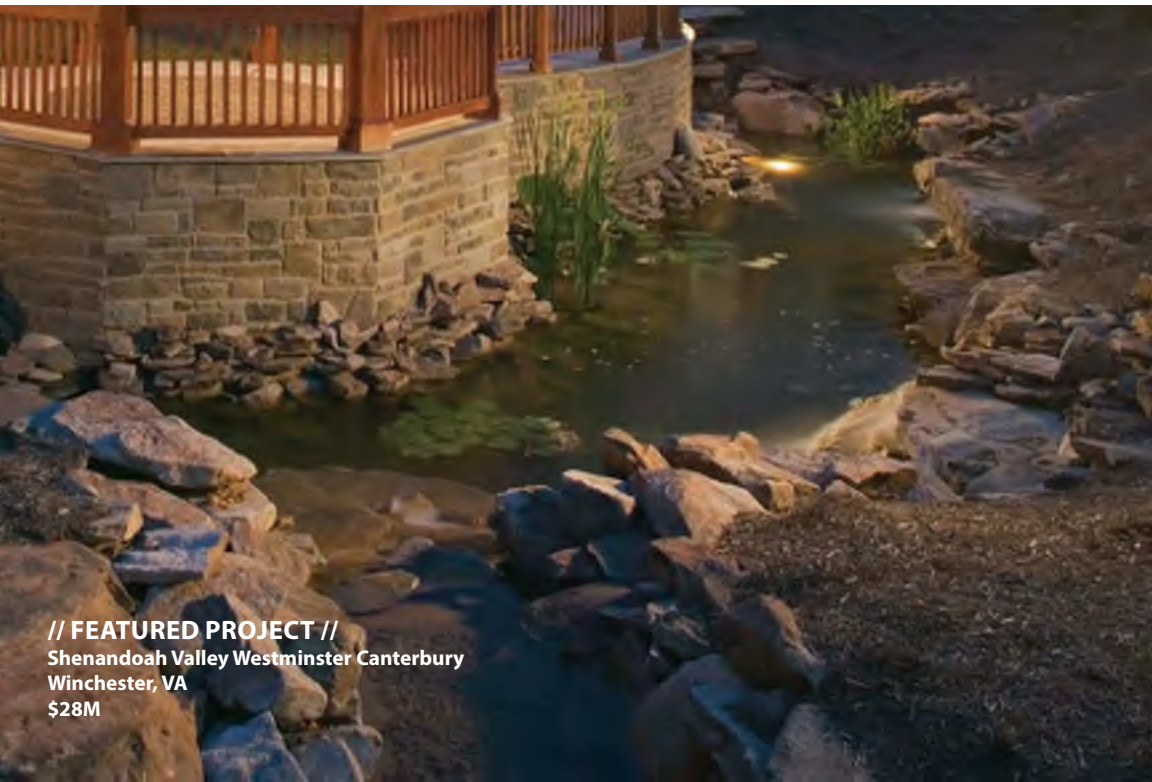
Progressive Casualty Insurance Co.
Bank of America
Hines
International Business Machines
Protometrix
AT&T
ATAPCO Properties, Inc.
Camden Partners Holdings, LLC
MBC Realty, Inc.
American Red Cross
Unilever Bestfoods North America
JBG Companies
Chase Manhattan Bank

PECO Energy Company
The World Bank
Capital One Services, Inc.
Nielsen
AEGON USA Realty Advisors
Kaiser Associates
T. Rowe Price Associates, Inc.
Parsons
MasterCard Worldwide
Irvine Company
Lockheed Martin
M&T Bank
Verizon
State Farm Insurance Companies





SENIOR LIVING EXPERIENCE



// FEATURED PROJECT //
Shenandoah Valley Westminster Canterbury
Winchester, VA
\$28M

Whiting-Turner // Introduction

“It is remarkable to work together with the investment made by a General Contractor to provide the very best project management, supervision and management systems available. This alone is extraordinary and rare to find in this marketplace... My summary comment is simply that I consider “Whiting-Turner, integrity at its best – performance at its finest.”

Joe Krewatch, Owner’s Representative Shenandoah Valley Westminster Canterbury
Krewatch Construction Management

SAMPLE CLIENT LIST

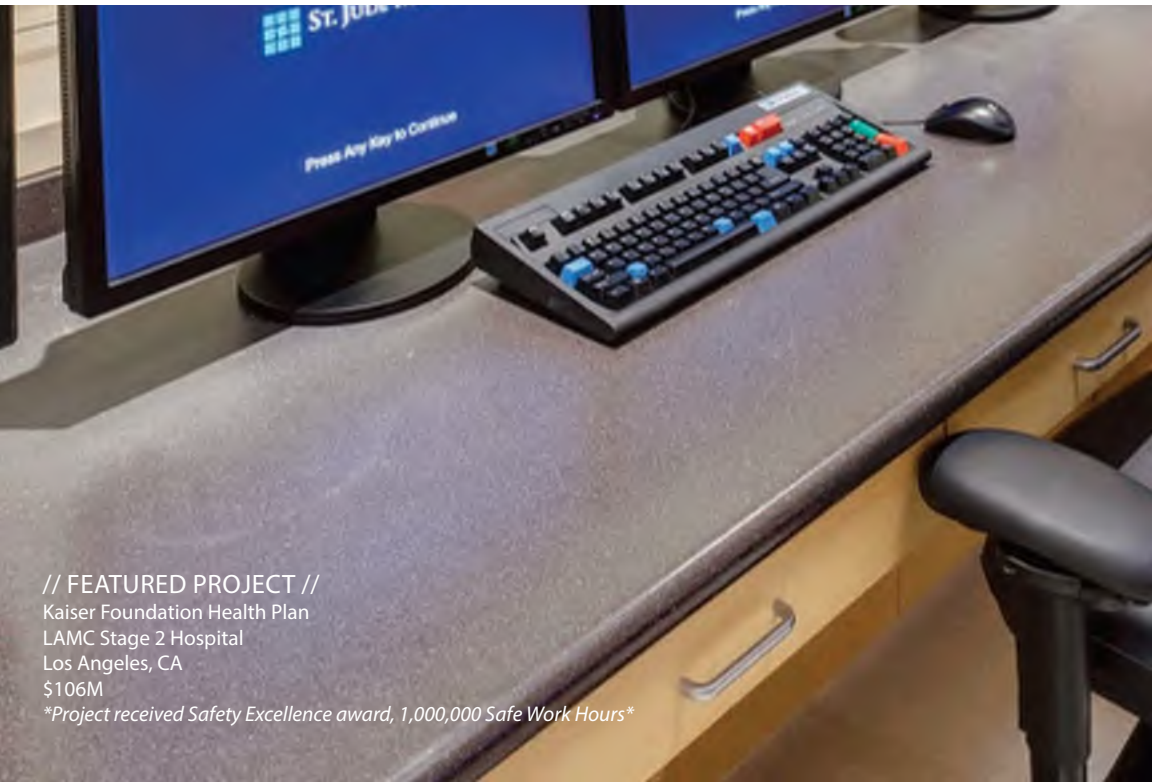
Charles E. Smith Life Communities
Edenwald
Enterprise Homes, Inc.
Erickson Living
Falcons Landing
3 Goodwin House Incorporated
Green Hill

HCR ManorCare
Keswick Multi-Care Center
LifeBridge Health (Levindale)
MorseLife, Inc.
Shelter Development
Vi Living (formerly Classic
Residence by Hyatt)
Vinson Hall LLC





HEALTHCARE EXPERIENCE



// FEATURED PROJECT //
Kaiser Foundation Health Plan
LAMC Stage 2 Hospital
Los Angeles, CA
\$106M

Project received Safety Excellence award, 1,000,000 Safe Work Hours

Whiting-Turner // Introduction

“Whiting-Turner demonstrated an extraordinary ability to work hand in hand with the project team to meet the highest demands of the largest construction project in Cleveland Clinic history. We are extremely pleased with their efforts...”

Dr. Delos Cosgrove, President and CEO
Cleveland Clinic

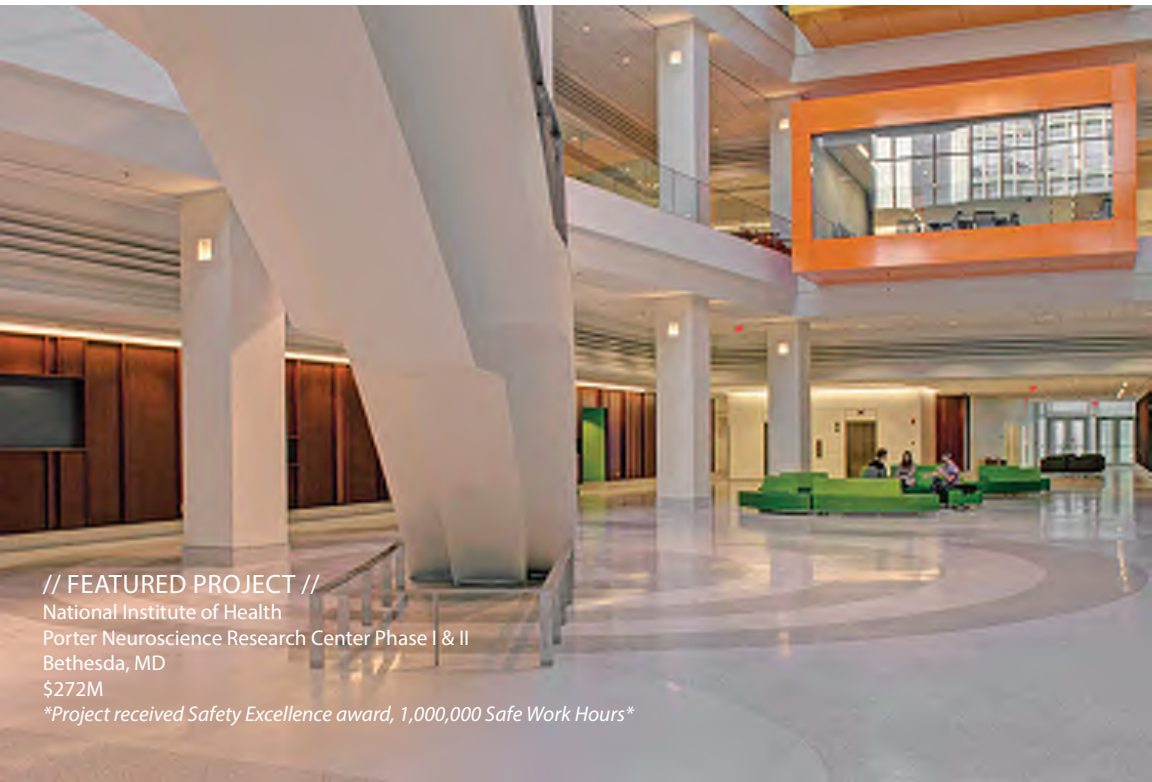
SAMPLE CLIENT LIST

- | | |
|------------------------------------|-------------------------|
| Albany Medical Center | Johns Hopkins Hospital |
| American Red Cross | Kaiser Permanente |
| Anne Arundel Medical Center | Kennedy Kreiger |
| Bayhealth | Lehigh Valley Hospital |
| Bon Secours Health System | LifeBridge Health |
| Children’s National Medical Center | Mercy Medical Center |
| Georgetown University Hospital | Sentara Hospital |
| Holy Cross Hospital | Union Memorial Hospital |
| | Washington Hospital |





SCIENCE + TECHNOLOGY EXPERIENCE



// FEATURED PROJECT //
National Institute of Health
Porter Neuroscience Research Center Phase I & II
Bethesda, MD
\$272M
Project received Safety Excellence award, 1,000,000 Safe Work Hours

Whiting-Turner // Introduction

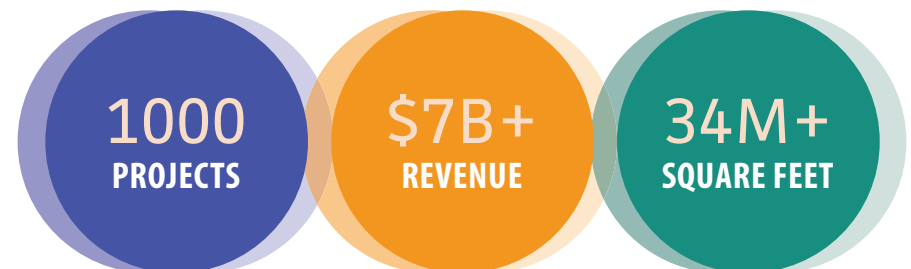
“The end product of [Whiting-Turner’s] efforts is a facility that will long be a source of pride and satisfaction to owner for years to come. I welcome the opportunity to work with the Whiting-Turner Contracting Company again who consistently strives to exhibit a high degree of professionalism in all contract activity.”

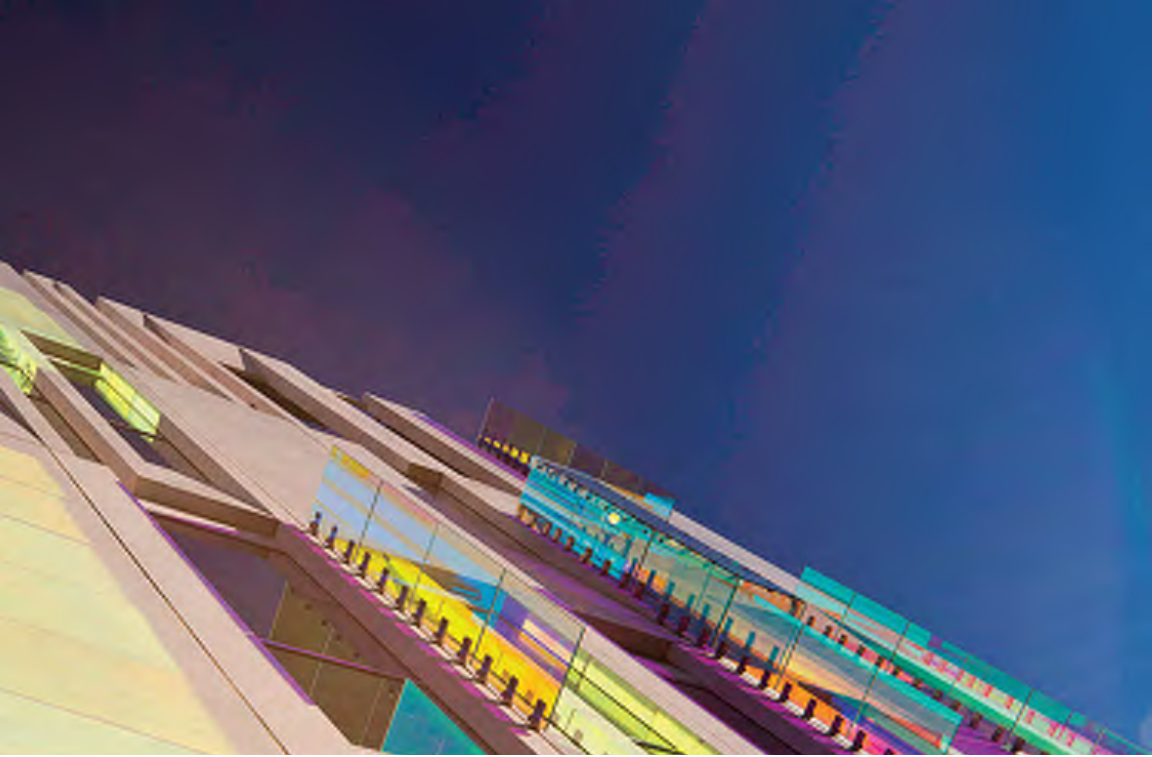
Mr. Jeff Dean • Higgins Development Partners

SAMPLE CLIENT LIST

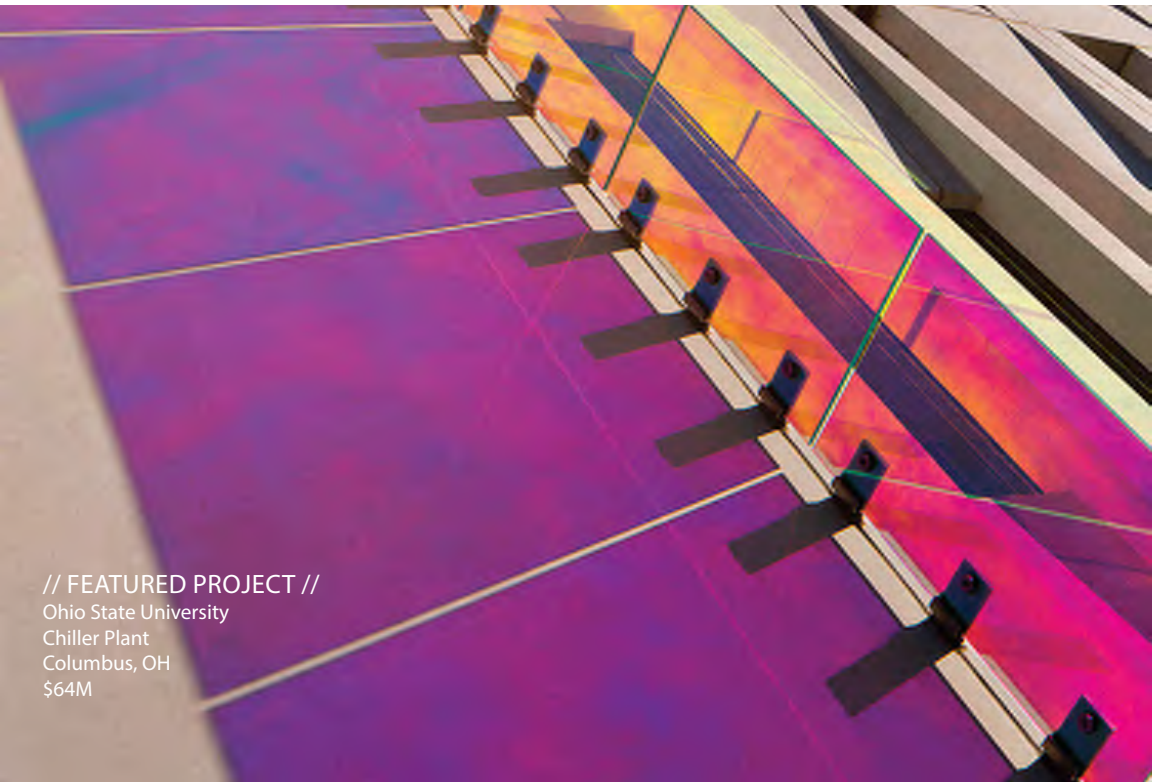
ACell Inc.
Actavis
Albany Medical Center
Alcon Laboratories
Alexion Pharmaceuticals
American Red Cross
Avalon Pharmaceuticals
Baxter Healthcare

Biospherics, Inc.
Bayer
Emory University
IVAX
Jackson Laboratory
NIH
Merial Labs
Pfizer
Pharmavite





EDUCATION EXPERIENCE



// FEATURED PROJECT //
Ohio State University
Chiller Plant
Columbus, OH
\$64M

Whiting-Turner // Introduction

“[Whiting-Turner] brought expertise with the mechanical engineering components that showed insight with the complex systems and demands for one of our most difficult campus clients – Utilities. Whiting-Turner not only found creative solutions to our functional needs but also to the difficult campus logistics that we must build around...”

Mr. Arden Freeman • The Ohio State University

SAMPLE CLIENT LIST

University of Georgia
Kennesaw State University
Ohio State University
Emory University
American University
Bryn Athyn College
College of William & Mary
Benteen Elementary

Booker T. Washington School
Bryn Mawr
Cooke Elementary
Naval Academy
Miami University
Georgia Institute of Technology
Eastern University
Pennsylvania State University
State University of New York



• Higher Education Overview •

SUSTAINABILITY

\$10 BILLION
IN LEED CERTIFIED PROJECTS

CERTIFIED BUILDINGS



Whiting-Turner is currently pursuing LEED Certification on over 200 projects.

PROFESSIONAL CERTIFICATIONS



OTHER GREEN BUILDING CERTIFICATIONS

- » 8 Green Globes Certified Projects
- » 7 Enterprise Green Communities Certified Projects
- » An Earthcraft Multi-family Certified Project
- » A NGBS Multi-family Certification

SUSTAINABILITY

RANKINGS



