



Identifying electronic health record (EHR) designs that contribute to inpatient medication errors: a systematic review

Matthew Aludino, Vickie Nguyen, Roy Weng

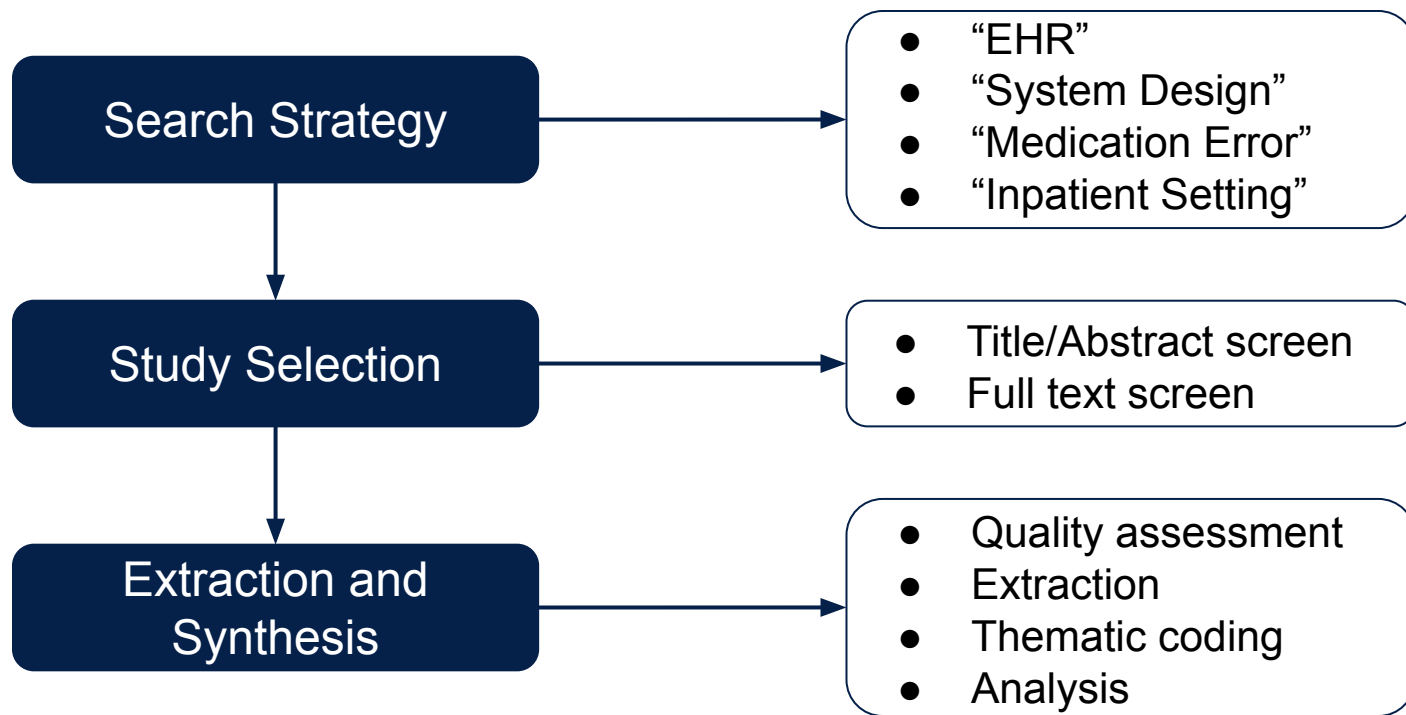
UCSF School of Pharmacy

Advisors: Judie Tran, PharmD; Trang Trinh, PharmD, MPH; Kevin Rodondi, PharmD

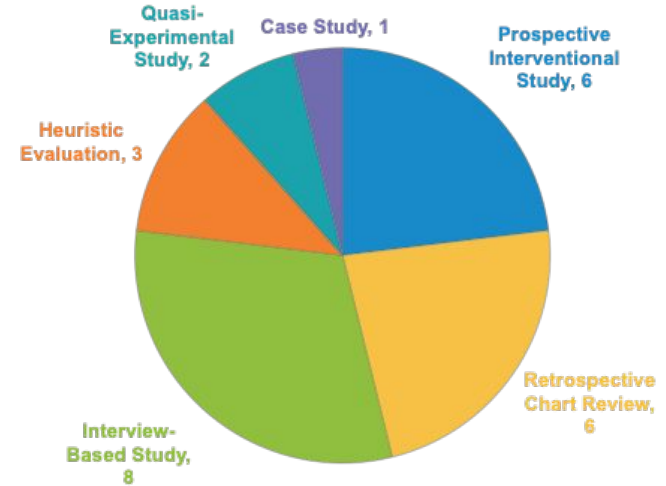
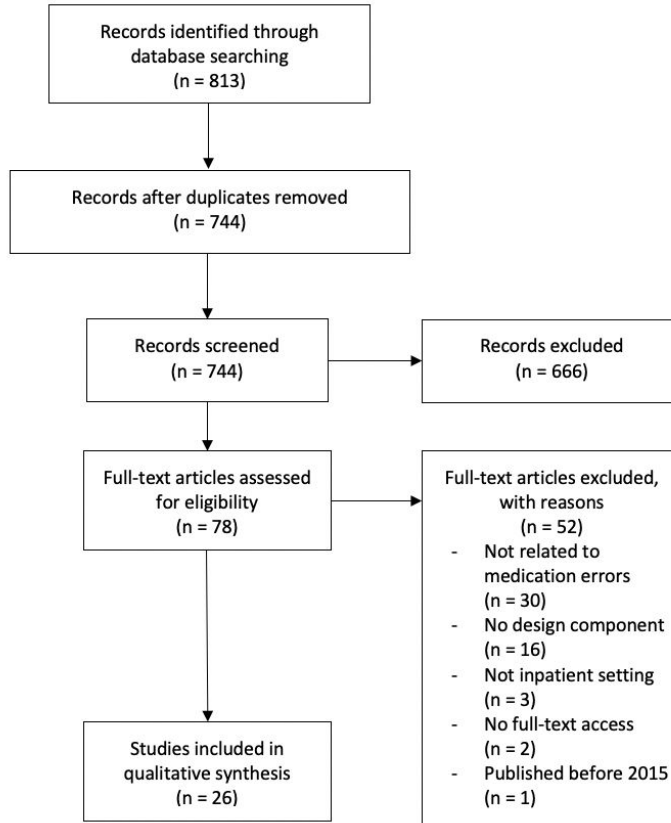


The aim of this systematic review is to summarize EHR design components and capabilities in the literature that can contribute to medication errors in the inpatient setting.

Methods



Results



Results

Visual Display

**Alerts and System
Feedback**

Data Entry

**Other
System-Induced
Sources of Error**





Conclusion

- EHR vendors, informaticists, and EHR end-users should evaluate these issues in a **context-specific** manner
- Clinicians must remain vigilant when using clinical decision support
- Future work remains to improve EHR features



Acknowledgements

Questions?

vickie.nguyen2@ucsf.edu

