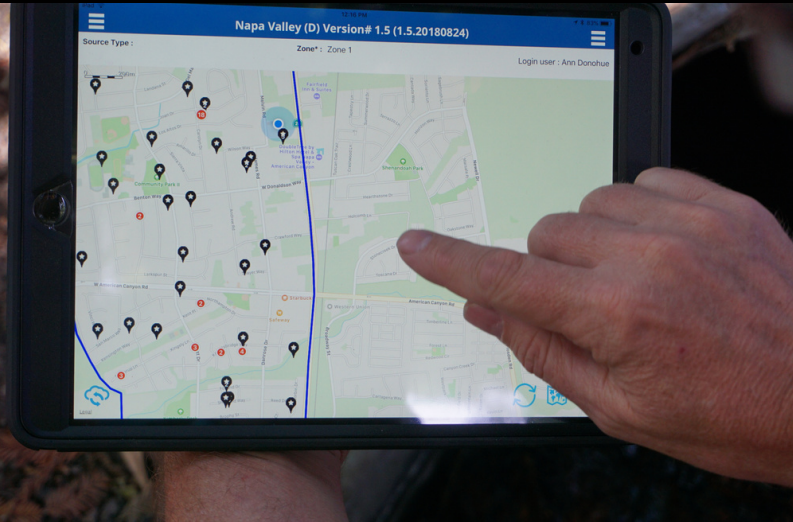




MAPVISION® PROVIDES A HOME FOR GOOD DATA TO GROW AND FLOURISH.

THREE LEVELS TO MEET YOUR NEEDS
ELITE, PREMIER, AND ENTERPRISE



MapVision® currently supports programs across the country - from small to large.

The data management platform automates and streamlines your organization's workflow by building a cross-department enterprise that supports data sharing and sustains data integrity.

MapVision® is the most efficient, effective, and resourceful geospatial data management solution available. The software is loaded with standard features to support you now and as you grow.

MapVision® Elite

MapVision® Elite is an inexpensive, easy to use, and quickly deployed solution for small operations, small budgets, or operations with a short season. Our Elite system includes many essentials:

Operations and Mapping

- iOS Field App (online and offline)
- Intuitive Mapping (GIS background not needed)
- Activity Card Management
- Zones and SubZone Management
- Point, Poly, and Line Site Management
- My Tasks Feature (Assignments: AC, Lab, SR, Workflow, etc.)
- KML and Shapefile Upload to Field Map
- Treatment Planning and Route Management System
- Truck + Aircraft Mission Replay
- Real Time User Tracking on Field Map
- Service Requests: CRM, SRM Mgmt, Public SR Page

Lab, Administration, and Reporting

- Laboratory Surveillance/Mosquito Pool Map
- Inventory Management
- Main Dashboard
- User Management
- Extensive Rules and Legend Management
- Equipment and Vehicle Maintenance
- Notification System (emails, tasks, etc.)
- Inventory Management
- VectorSurv Integrations & Reconciliation
- 10 Standard Reports...and more!

Learn about
MapVision®
Premier &
Enterprise





MAPVISION® PROVIDES A HOME FOR GOOD DATA TO GROW AND FLOURISH.

THREE LEVELS TO MEET YOUR NEEDS
ELITE, PREMIER, AND ENTERPRISE

MapVision® Premier

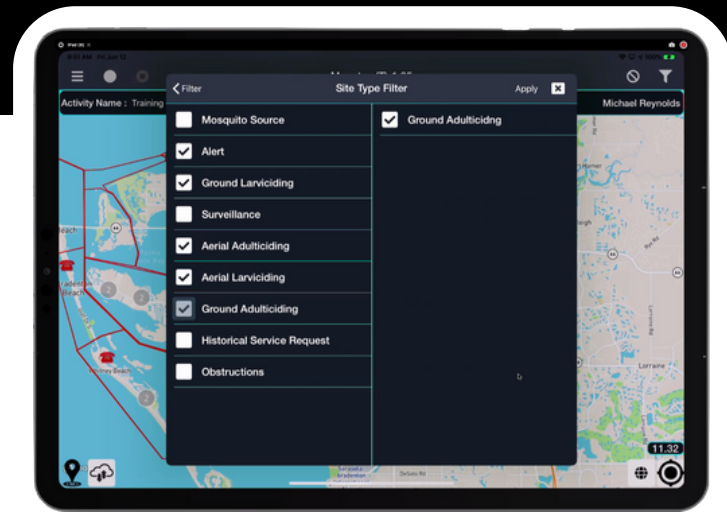
MapVision® Premier makes operational and surveillance activities more cohesive. Standard features at the Premier Level include:

All of the Elite Level offerings plus...

- Workflow and Task Assignment System
- Managing Pesticide Resistance Testing
- Managing Sentinel Chicken Testing

The Premier Level also opens the door to additional features via à la carte upgrades:

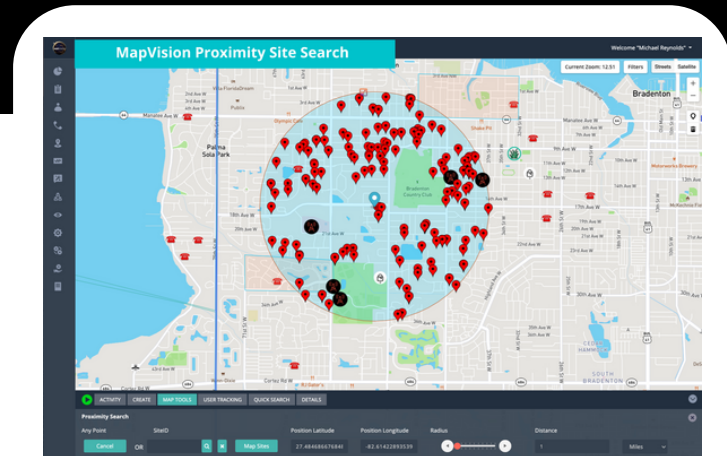
- Software Customizations
- Several Enterprise features (below)
- Swimming Pool Imagery Management...and more!



MapVision® Enterprise

MapVision® Enterprise is the most sophisticated level. It is rich with features - **including the dynamic Microsoft Power BI.**

- Ground & Aerial Workflows
- Automatic Inventory Deductions
- Heightened Surveillance
- Parcel Inspection Plans (door to door invasive species inspections)
- Rodent & Wildlife Surveillance
- Tick Surveillance
- Survey Integration Tool (SurveyMonkey +)
- Social Media Integration



Learn more about
Power BI & our iOS
ULV Flow Control APP

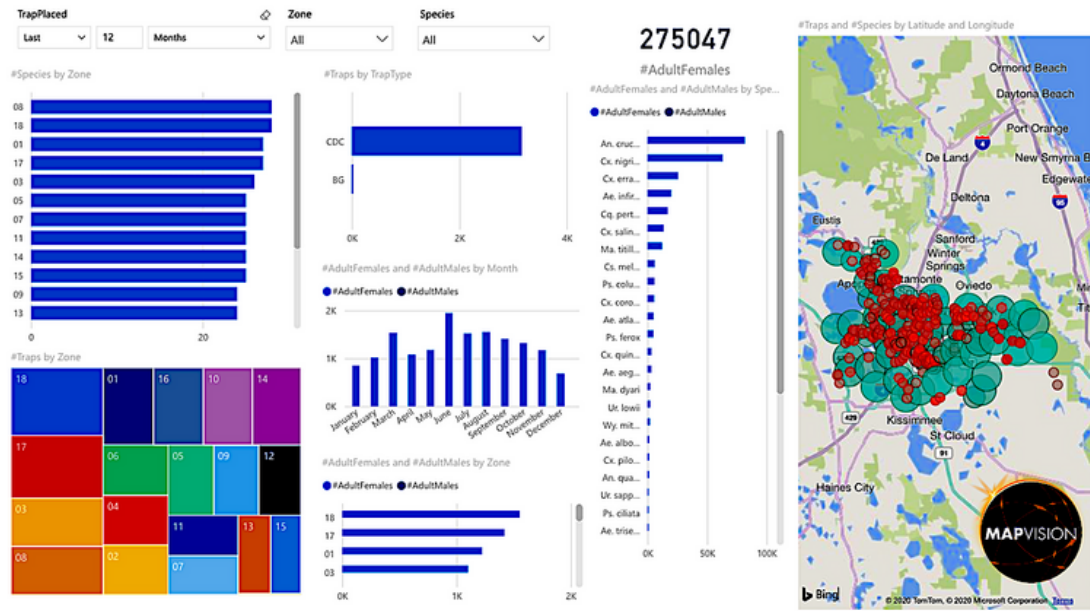




MapVision® is all about integrations that help manage various activities throughout an operation.

Microsoft Power BI

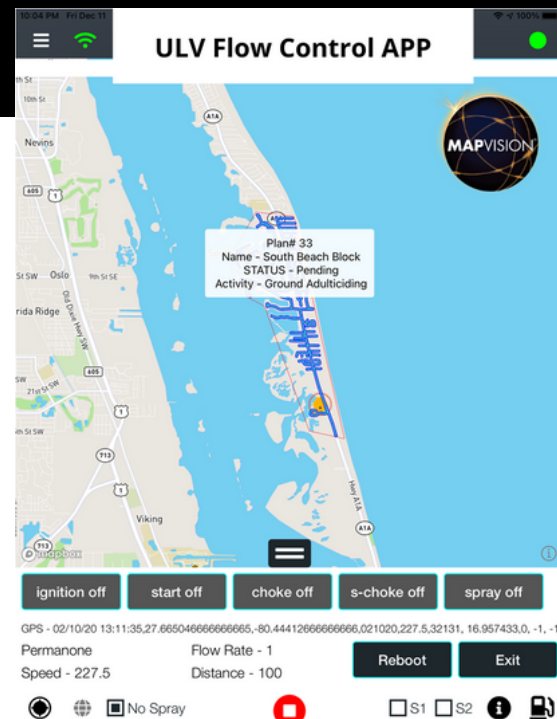
Microsoft Power BI offers robust dashboards, customized reports, visualizations, and analytics that empower managers to make decisions (faster) and provides powerful (and visually appealing) reporting at your fingertips to share with stakeholders.



MapVision® iOS ULV Flow Control APP

Planning for fogging routes by ground equipment is often labor intensive and time sensitive. We know, firsthand, how important it is to streamline this process. From route planning to equipment calibration to applying the products. The tool brings it all back together into MapVision® for your agency's reporting requirements.

Our iOS ULV Flow Control App is beautifully simple by design for initial route planning (including No Spray and Notification sites), easy to use, and integrates with most spray equipment with post-treatment files being downloaded seamlessly into MapVision®.



Bill Reynolds, President and CEO
407.468.0008 | breynolds@leateam.com

Piper Kimball, Vector Biologist
707.484.6937 | piper@leateam.com

Mike Reynolds, VP and COO
828.246.2111 | mreynolds@leateam.com

