



THREE OPTIONS TO SUPPORT YOUR NEEDS.

AERIAL APPLICATIONS

AIRCRAFT | UAS

GROUND APPLICATIONS

TRUCKS | BACKPACKS | HANDHELD SPRAYERS



DropVision® Basic

Our basic version provides immediate data analysis of a droplet spectrum to ensure compliance with insecticide labels. This makes it an ideal tool for calibrating ground and aerial ULV spray equipment.



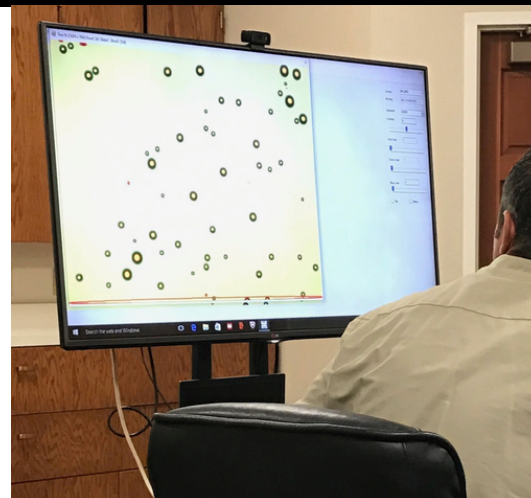
DropVision® FL (Fluorescence)

The fluorescence system was created to consider the user who samples airborne droplets in geographic regions that have background particles that can be mistaken for insecticide droplets. Our proprietary software eliminates background particles, only recognizing those droplets that contain a unique fluorescence tracer.



DropVision® AG

This system utilizes cards vs. slides and is designed for the application of liquid products that produce larger droplets associated with mosquito larviciding treatments, aerial agriculture applications, controlling noxious weeds, and forestry pests.



DropVision AG is great for monitoring applications targeted towards cryptic larval habitats - such as artificial containers and storm drains.

Learn more about DropVision AG below.



DropVision AG

DropVision AG is designed for the user who applies liquid products that produce larger droplets associated with mosquito larviciding treatments, aerial agriculture applications, controlling noxious weeds, and forestry pests. DropVision AG is ideal for swath characterizations of ground and aerial equipment, providing detailed droplet data related to droplet size, volume, density, and deposition - some advantages unavailable from other droplet and swath analysis solutions.



A FEW WAYS DROPVISION AG CAN SUPPORT YOUR OPERATION



Ease of use



Reads droplet sizes from 30 to 4,000+ microns



Provides swath analysis and downwind drift analysis



Dynamic multiple swath results to see "race track" pattern depositions



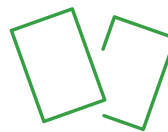
Analyzes and provides rapid results in the field



Supports wide-area larviciding efforts by aircraft, UAS, truck, backpack, & handheld sprayers



Internet connectivity not required

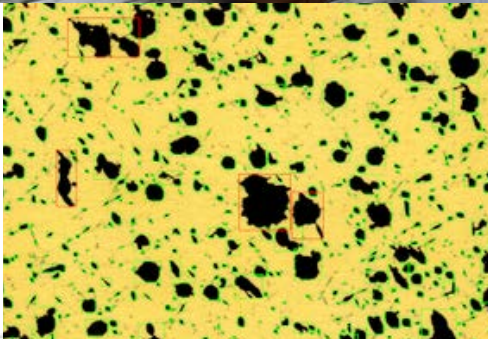


Option to use water sensitive or kromekote cards

A STRONG HISTORY OF AERIAL APPLICATION + DROPLET ANALYSIS TECHNOLOGIES

With over 35 years of experience inventing GPS guidance systems, droplet analysis, and aerial application solutions - Leading Edge has never stopped embracing new technology. Leading Edge's history includes partnerships with government agencies and research institutions to manage vectors, pests, noxious weeds, harmful algae blooms, and more. We understand every aspect of pesticide applications from the regulatory issues at the federal and state levels to the point that a droplet deposits on a weed, on a crop, in the water, or on an insect.

DropVision AG Technologies



Sample #	Distance	# Droplets	Total Volume	VMD	Droplet Density	Volume Density
0	0.0 m	218	237.72 µl	1.091 µm	2.06 µl/cm²	0.02 µl/cm³
1	12.0 m	113	128.87 µl	1.141 µm	0.98 µl/cm²	0.01 µl/cm³
2	24.0 m	60	66.00 µl	1.194 µm	0.50 µl/cm²	0.00 µl/cm³
3	36.0 m	28	31.32 µl	1.247 µm	0.22 µl/cm²	0.00 µl/cm³
4	48.0 m	15	16.50 µl	1.300 µm	0.10 µl/cm²	0.00 µl/cm³
5	60.0 m	7	7.70 µl	1.353 µm	0.05 µl/cm²	0.00 µl/cm³
6	72.0 m	3	3.30 µl	1.406 µm	0.02 µl/cm²	0.00 µl/cm³
7	84.0 m	1	1.10 µl	1.459 µm	0.01 µl/cm²	0.00 µl/cm³
8	96.0 m	0	0.00 µl	1.512 µm	0.00 µl/cm²	0.00 µl/cm³
9	108.0 m	0	0.00 µl	1.565 µm	0.00 µl/cm²	0.00 µl/cm³
10	120.0 m	0	0.00 µl	1.618 µm	0.00 µl/cm²	0.00 µl/cm³



DropVision AG provides for the efficient and immediate data analysis of the droplet spectra produced by aerial or ground based spray systems.

The system electronically captures images of water/oil sensitive cards or Kromekote dye cards, analyzing each droplet while eliminating any background objects, coalesced droplets or nonqualified droplets through advanced proprietary image analysis algorithms.

The system consists of:

- A high-resolution portable scanner
- A laptop computer
- DropVision AG Advanced Droplet Image Analysis software
- DropVision AG Graphing & Reporting software

Rapid Analysis, Proven Cost Savings, and Efficiency

Manually reading droplet cards is time-consuming, labor-intensive, and subjective. DropVision AG is able to read one card in 11 seconds, batch processing a number of cards while automatically producing graphs and reports for one or several replications. Additionally:

- Cards are analyzed and reports are produced to provide the user with current EPA label standards and requirements.
- Incorporates DV 0.1, DV 0.5, DV 0.9, droplet densities per cm sq, number of drops read, percent of coverage, total volume, VMD, volume density per acre, and relative span

Powerful and Productive

DropVision AG can analyze and accommodate a single card analysis or an unlimited number of cards and locations. This makes DropVision AG very unique and capable of analyzing:

- an array of cards for swath analysis of an aircraft
- a complex network of droplet collection measuring stations in a wide area application, allowing for comprehensive data analysis for drift and deposition studies.

Flexible Data Output

DropVision AG produces a comma delimited ASCII text file that is easily imported into Microsoft Excel® for further analysis. Each field of information is labeled and simple to interpret.

"DropVision AG is simple to use, reads spray cards quickly and is portable enough to carry in a briefcase...The technical support from Leading Edge is second to none."



Piper Kimball, Vector Biologist
707.484.6937 | piper@leatteam.com
www.LeaTeam.com

