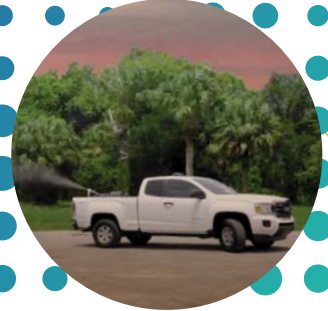




Innovation
through
formulation



Welcome!

Thank you for joining us at the AMCA Virtual Annual Meeting

Please feel free to explore the pdf resources and videos here in our booth.

Then, be sure to visit us "in person" during exhibit hours OR schedule an appointment to meet with one of our team members.

The following Table of Contents will help navigate you to the topics or products you are most interested in:

ULV Foggers for Mosquito Control	Page 2
ADAPCO Technology	Page 3
ULV Mosquito Adulticide Products	Page 7
Mosquito Larvicide Products	Page 9
ADAPCO's Education and Training	Page 11

Guardian ULV

The Guardian line of ULV sprayers from ADAPCO

Guardian 190 G4

The Guardian 190 G4 sets a new standard in professional mosquito control. Built to endure the most rigorous application needs, this ULV workhorse employs advanced aerosol generator technology and is outfitted with the highest quality components and key features.

- 19 HP KOHLER Twin Cylinder Electronic Fuel Injected (EFI) engine
- 3 Year Limited Warranty
- 12 gallon EPA-compliant fuel tank
- 350 CFM Howden ROOTS high output blower
- Vectored Air Atomization Technology (VAAT)
 - Laser Tested Aluminum Alloy Nozzle
- Oversized lockable pump box for easy calibration and maintenance
- Fixed flow in-cab control is standard with optional upgrading available with ADAPCO's Monitor 4S application tracking system



Guardian 95 G4

ADAPCO offers high performance in a compact design with the Guardian 95 G4. Ideal for less demanding programs or private applicators, the 95 G4 is a dependable, professional quality sprayer with a budget-friendly price. This machine offers a space saving footprint.

- 9.5 HP KOHLER Command PRO OHV fuel efficient engine
- 175 CFM Howden ROOTS high output blower
- Vectored Air Atomization Technology (VAAT)
 - Laser Tested Aluminum Alloy Nozzle
- Oversized lockable pump box for easy calibration and maintenance
- Fixed flow in-cab control is standard with optional upgrading available with ADAPCO's Monitor 4S application tracking system and variable flow
- In-cab control provides spray switch control, engine off and hot start ignition



Guardian 55 ES

The Guardian 55 ES is ADAPCO's solution for professional-quality mosquito and flying insect control on a price conscience budget. Perfectly sized to easily spray golf courses, barn & stable areas, and other low output areas. The 55 ES has a lightweight design with a compact footprint.

- 5.5 HP commercial quality fuel efficient HONDA engine
- Portable, lightweight aluminum construction
- Aluminum compressor with cast iron cylinder
- 2.5 gal formulation tank or drop in a 2.5 gal RTU jug with included cap & pickup tube
- Flow rates adjustable with stainless steel orifice disks
- Optional wired remote available



ADAPCO Technology

AccuFlow®

The AccuFlow® line of GPS based variable flow pump and sprayer control from ADAPCO.

AccuFlow 4

The AccuFlow 4 is an onboard GPS system designed to control and monitor truck mounted spray applications for mosquito control. ADAPCO's AccuFlow 4 provides an easy-to-use interface to ensure you are always dispensing an accurate amount of insecticide proportionate to your ground speed in real time.

Built on a professional-grade embedded ARM Linux platform, AccuFlow 4 provides full functional control of the ULV sprayer as well as valuable visual and audible feedback to the driver. Automated sprayer controls include engine on/off/choke, spray on/off, flush, and both variable flow and manual fixed flow modes.



Features & Benefits

- Visual and audible controls – Driver awareness
- Closed-Loop variable flow control – reduce driver fatigue, treat more acres in less time, eliminate over and under dosing, ensuring applications are within label rates
- Configurable with SD-Card and AccuFlow 4 Setup Utility – straightforward and user-friendly
- Password protection- security
- Expandable – AccuFlow 4 system can easily be upgraded to record and report spray mission data and more
- Universal – plug-and-play with Guardian ULV sprayers and easily adaptable to any gas engine sprayer brand



Monitor

The Monitor line of GPS based variable flow pump and sprayer control from ADAPCO

Monitor 5

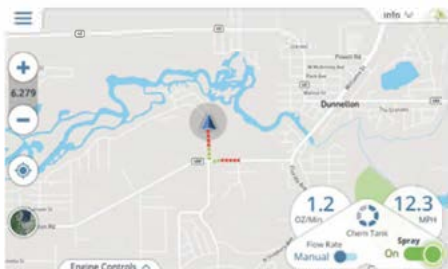
The Monitor 5 is an on board GPS system, designed to control and monitor ground-based insecticide applications for mosquito control. The ADAPCO Monitor 5 provides enhanced user interface and new levels of control over your ground ULV spray operations.



Built on a professional-grade advanced quad-core mobile platform, the Monitor 5 has a powerful graphical user interface. Replacing the in-cab control terminal used with previous generations of the Monitor family, the Monitor 5 graphical user interface provides:

- Touch-screen input for control of all functions
- Moving map interface that shows the current vehicle location, as well as illustrating the track and spray on/off status during the trip
- Control interface that manages all aspects of spray system operation and calibration

Examples of the moving map interface showing normal and night modes below:



Working with the GeoTracker Professional program, Monitor 5 borrows data from the rich administrative interface of the ADAPCO GeoPro Data Center application, including:

- Integration of the comprehensive list of treatment products available in the ADAPCO GeoPro database application
- Integration of user-designated Sites including special "Sites of Interest" like Do Not Spray and Apiary sites that can trigger alarms in the Monitor 5 user interface

The upgrade to the Monitor 5 from the Monitor 4s can be easily achieved with a new adapter. It also provides the option of using a simple spray control pendant.



Monitor LT2

Monitor Larvicide Tracking 2 is an on-board GPS based system. Monitor LT2 performs detailed vehicle location and event recording and reporting. It is designed for a wide range of specialty application spray systems. Monitor LT2 is the perfect product for businesses that insist on knowing where their application equipment is and what it is doing at all times. The primary event monitoring objective for Monitor LT2 is the application of a product that flows at a predetermined rate.

Monitor LT2 is paired with GeoTracker Professional web-based software from ADAPCO to deliver simplified chemical record keeping, including a detailed usage summary to ensure accurate reporting of chemicals used by location. Supervisors have a visual map and treatment mission replay to verify applications and maximize operational and management efficiencies.

The Monitor LT2 is in compliance with NPDES by providing documented GPS logged application data, including application locations, time and the amount of chemical applied. Users have

protected liability exposure by tracking the vehicle and providing undisputable data of fleet locations and activities.



MONITOR LT2 Features

- Storage up to 32GB on SD cards
- High-end GNSS GPS precision recording
- Linux based system to provide stability & security
- Compatible with FMI pumps
- Works with any sprayer that has an electrical signal for spray on/off
- Compatible with any sprayer that can take an inline flow switch with flow rates from 0.5 gal/min and higher



Monitor 5, 4, 4s & LT2 Extended Warranty

- No unexpected repair bills
- Protect your investment
- Peace of mind

Exclusively
from ADAPCO

For more information,
please visit:
myadapco.com/service

(800) 367-0659



THE COMMERCIAL SUPER DUTY

Powered by
HONDA
ENGINES

TRANSPORTATION



GENERAL APPLICATIONS



Aerosol Fog
30 Microns or Less
Eliminates Adult Mosquitos

ULV
SPRAYING



Uniform Spraying
80-100 Microns
Eliminates Mosquito Larvae

LARVICIDE
SPRAYING



Uniform Spraying
100-600 Microns
Barrier Adult Mosquitos

BARRIER
SPRAYING

SUPERDUTY WITH ATOMIZER

PERFECT FOR SPRAYING MOSQUITO LARVAE

Tracking and suppression of larvae is one of the most important aspects of mosquito control programs.

ATOMIZER VOLUTE

Designed to provide a uniform spray through out application between 80 -100 microns.

15" HUCK RIVETED FAN WITH CHAIN & SPROCKET

Gives 210° right to left rotation and Savage Industrial Actuator.

HEAVY-DUTY 10 GAUGE STEEL FRAME

Powder-coated to withstand harsh elements and chemical contact.

FEATURES:

- 100 Gallon Polyethylene Tank
- Belt Driven 6 Roller Cast Iron Pump (22 GPM)
- 20 HP Twin Cylinder Electric Start Honda GX 630 Engine
- Forklift Compatible Frame
- Easy to Use Wireless Remote (Fan rotation, throttle, liquid and kill switch)


ADAPCO[®]
Preserving Public Health
An A1 Mist Sprayer Distributor



ULV Mosquito Adulticide Products

DIBROM[®] CONCENTRATE

DIBROM Concentrate delivers the highly effective naled chemistry in an oil-based formulation, with the highest specific gravity of any aerial ULV adulticide. These unique characteristics allow for the accurate spray droplet deposition and reliably consistent efficacy with minimal environmental persistence.

TRUMPET[®] EC

TRUMPET EC delivers the highly effective naled chemistry in a formulation that contains an emulsifier for easy flushing with water. This aerially applied formulation is second only to DIBROM for having the highest specific gravity but offers the same reliably consistent accuracy and efficacy with minimal environmental persistence.

Fyfanon[®] ULV Mosquito Insecticide

Fyfanon ULV Mosquito Insecticide provides proven, cost-effective control of adult mosquitoes and is ideal in an insecticide resistance management program for insecticide rotation with pyrethroid insecticides. Fyfanon ULV can be applied by ground or air for adult mosquito control on rangeland, pasture, and other uncultivated non-agricultural areas including populated residential and rural areas.

Fyfanon[®] EW Insecticide

Fyfanon EW is a water-based emulsion that can be applied undiluted or diluted with water as an effective spray against adult mosquitoes. It is the first low odor malathion adulticide for mosquito control and is well suited for use around homes and residential areas for control of adult mosquitoes, including pyrethroid resistant *Aedes aegypti*. It is an ideal choice for product rotation with pyrethroids in an urban insecticide resistance management program, and where pyrethroid resistance is present.

EVERGREEN[®]

EVERGREEN is a suite of four synergized, natural pyrethrin formulations for ULV application. Each EVERGREEN formulation offers its own unique characteristic to fit specific needs. All formulations are labeled for use in a broad range of sites from urban and residential areas, to recreational, wetland, and agricultural crop sites, and more. Additionally, all formulations can be applied by ground or air. EVERGREEN formulations are botanical insecticides, which, in addition to being effective, may have better public acceptance and perception in communities.

EVERGREEN formulations are an excellent option for chemical rotation with organophosphates as part of a resistance management strategy.



ULV Mosquito Adulticide Products, continued



EVERGREEN 12-60 ULV Concentrate is a concentrated oil-based formulation containing **1.0 lb. of pyrethrin** and 5.0 lb of synergist per gallon. The high concentration offers cost savings as well as versatility for customizing the dilution and spray concentration to fit your specific needs. Recommended for aerial and ground application.

EVERGREEN 5-25 Air is a ready-to-use oil-based formulation containing **0.475 lb. of pyrethrin** and 2.375 lb of synergist per gallon. The heavier weight of this formulation (approx. 9.5 pounds per gallon) makes it a more attractive choice for aerial applications. Recommended for aerial application. It is labeled for both aerial and ground application.

EVERGREEN 5-25 Ground ULV is a ready-to-use oil-based formulation containing **0.365 lb of pyrethrin** and 1.824 lb of synergist per gallon. EVERGREEN 5-25 Ground ULV is a good choice for use through ground ULV equipment to target mosquitoes in harborage and hiding areas in urban, rural, residential, agricultural, cropland, wetland, recreational areas, etc. Recommended for ground application. Labeled for both aerial and ground application.

EVERGREEN Mosquito Adulticide EC 60-6 is a an emulsifiable concentrate formulation containing **0.5 lb of pyrethrin** and 5 lb of synergist per gallon, providing the **highest pyrethrin to synergist ratio of 1:10**. Recommended for ground or aerial application where the higher synergist ratio is needed.

PermaSease®

ADAPCO® is pleased to provide a full portfolio of permethrin formulations. A mainstay of many public health programs, PermaSease uses the pyrethroid permethrin as the active ingredient. PermaSease provides rapid, reliable knockdown and kill of mosquitoes.

In addition to the standard, oil-based formulations, the PermaSease portfolio also includes a line of Universal Concentrate (UC) formulations for added flexibility and ease of use. Universal Concentrate (UC) Formulations offer unparalleled flexibility in dilution and application, and can be diluted with water or oil, or applied undiluted.



VBC Valent BioSciences Larvicides from ADAPCO

Biorational solutions for public health professionals available exclusively through ADAPCO



Bacillus thuringiensis subsp. *israelensis* Strain AM65-52

Biorational larvicide granular formulation that contains floating and sinking granules to ensure distribution of active ingredient throughout larval feeding zone. Provides broad control for all mosquito species allowing for application flexibility in numerous vegetated habitats.

200 ITU per milligram against *Ae. aegypti*

40 lb bag &
1000-1400 lb super-sack



Bacillus thuringiensis subsp. *israelensis* Strain AM65-52

Smaller granule formulation for maximum coverage at low rates. Increased bulk density and smaller size, relative to VectoBac® G, decreases potential for off-target application. Primarily used for vegetated habitats and offers good penetration of dense vegetation.

200 ITU per milligram against *Ae. aegypti*

40 lb bag &
1000-1400 lb super-sack



Bacillus thuringiensis subsp. *israelensis* Strain AM65-52

Higher density granule, relative to VectoBac® GS, designed specifically for use in habitats covered in heavy vegetation. VectoBac® GR was the first granule bacterial larvicide to complete the World Health Organization Pesticide Evaluation Scheme. Used primarily in numerous vegetated habitats and offers good penetration of heavy vegetation and over areas that require organic listed products.

200 ITU per milligram against *Ae. aegypti*

40 lb bag &
1000-1400 lb super-sack



Bacillus thuringiensis subsp. *israelensis* Strain AM65-52

This dry, water dispersible granule formulation can be mixed with water, is OMRI certified and offers a variety of direct and wide area-application control methods used to target disease vectors in numerous, small and cryptic container habitats. Can also be used for treating over organic crops and other sensitive habitats.

3000 ITU per milligram against *Ae. aegypti*

1 lb canister &
25 lb drum



Bacillus thuringiensis subsp. *israelensis* Strain AM65-52

An aqueous suspension concentrate formulation for control of mosquitoes, black flies, and closely related fly larvae. Ready-to-use formulation allows for a wide variety of application methods including direct application into rivers and streams with black fly larvae present and open habitats with little to no vegetation to control mosquito larvae.

1200 ITU per milligram against *Ae. aegypti*

2.5 gal jug,
30 gal drum &
264 gal tote



Bacillus thuringiensis subsp. *israelensis* Strain AM65-52

A direct tablet formulation for control of container-breeding mosquito larvae. Primarily for use in residential areas with natural and artificial containers to control *Ae. aegypti* and *Ae. albopictus* larvae. Treatment typically occurs at monthly intervals.

2200 ITU per milligram against *Ae. aegypti*

50 tablet/bottle
400 bottle/case



Bacillus thuringiensis subsp. *israelensis* Strain AM65-52
+ (S)-methoprene

A single-brood granular formulation that combines two active ingredients to deliver effective control of all larval stages for complete single-brood floodwater mosquito control for multiple species at low rates. VectoPrime® incorporates BioFuse™ technology for consistent application and results. Can also be used as a pre-hatch application in habitats with controlled flooding cycles such as pastures, irrigated fields and duck clubs.

400 ITU per milligram against *Ae. aegypti* + 0.1% (S)-methoprene

40 lb bag &
1000-1200 lb super-sack





Bacillus sphaericus 2362 Strain ABTS-1743

A granular formulation used for residual, target-specific control of West Nile virus (WNV) vectors (*Culex* spp.). VectoLex® FG works best in vegetated habitats and in waters high in organic matter such as stagnant ponds for up to 28-days.

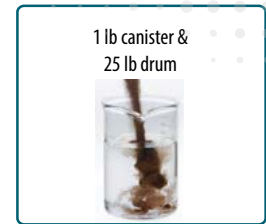
50 Bs/ITU per milligram against *Cx. quinquefasciatus*



Bacillus sphaericus 2362 Strain ABTS-1743

A water-dispersible granule formulation used for residual control of mosquito populations in polluted waters. Product can be used as an aerosol to control *Culex* spp. in "cryptic" underground habitats. VectoLex® WDG offers the storage stability of a dry product with the application versatility of a liquid. Widely used in open habitats with little to no vegetation.

50 Bs/ITU per milligram against *Cx. quinquefasciatus*



Bacillus sphaericus 2362 Strain ABTS-1743

This water-soluble pouch is ideal for treatment of "closed" habitats such as storm drains and catch basins. The pouch can be placed directly into larval habitats for effective residual control of WNV vectors.

50 Bs/ITU per milligram against *Cx. quinquefasciatus*



Bacillus thuringiensis subsp. *israelensis* Strain AM65-52 & *Bacillus sphaericus* 2362 Strain ABTS-1743

VectoMax® FG is a BioFuse™ based, combination active ingredient granule that delivers dual-modes of action in a carefully selected ratio in each microparticle. Extensive application flexibility: controls all mosquito species, can be used in clean and polluted water, and up to 28-day residual control. Used for treatment in a wide variety of habitats such as: wastewater, stagnant ponds, pastures, marine/coastal areas, waste tires, and a number of crop field habitats.

50 Bs/ITU per milligram against *Cx. quinquefasciatus*



Bacillus thuringiensis subsp. *israelensis* Strain AM65-52 & *Bacillus sphaericus* 2362 Strain ABTS-1743

This extended residual, BioFuse™ based, water-soluble pouch ensures larvae get a carefully selected ratio of both toxins when ingested. WSP's are malleable for fitting into tight places and do not get hung up in debris. This formulation is ideal for treating catch basins (catch basin residual: 42-56 days under typical environmental conditions) and other small breeding sites. The pouch is intended for direct placement into larval habitats.

50 Bs/ITU per milligram against *Cx. quinquefasciatus*



(S)-methoprene with Triple Release Technology™

A juvenile hormone analog insecticide for control of mosquito larvae in floodwater areas. MetaLarv® S-PT's Triple Release Technology™ and unique spherical pellet design allows for pre-hatch applications, superior residual control and advanced aerial ballistics for greater application flexibility for floodwater mosquito control programs.

4.25% (S)-Methoprene



(also available as water dispersible granule formulation)

Bacillus thuringiensis subsp. *israelensis* Strain AM65-52

A high-potency *Bti* pellet formulation designed to sink immediately upon application to assure accurate application to sites where larval populations develop. Designed specifically to target non-biting midges (Chironomidae) in habitats such as man-made lakes, natural lakes, ponds, lagoons, sewage oxidation ponds, channels and ditches used for industrial discharge.

800 ITU per milligram against *Aedes aegypti*



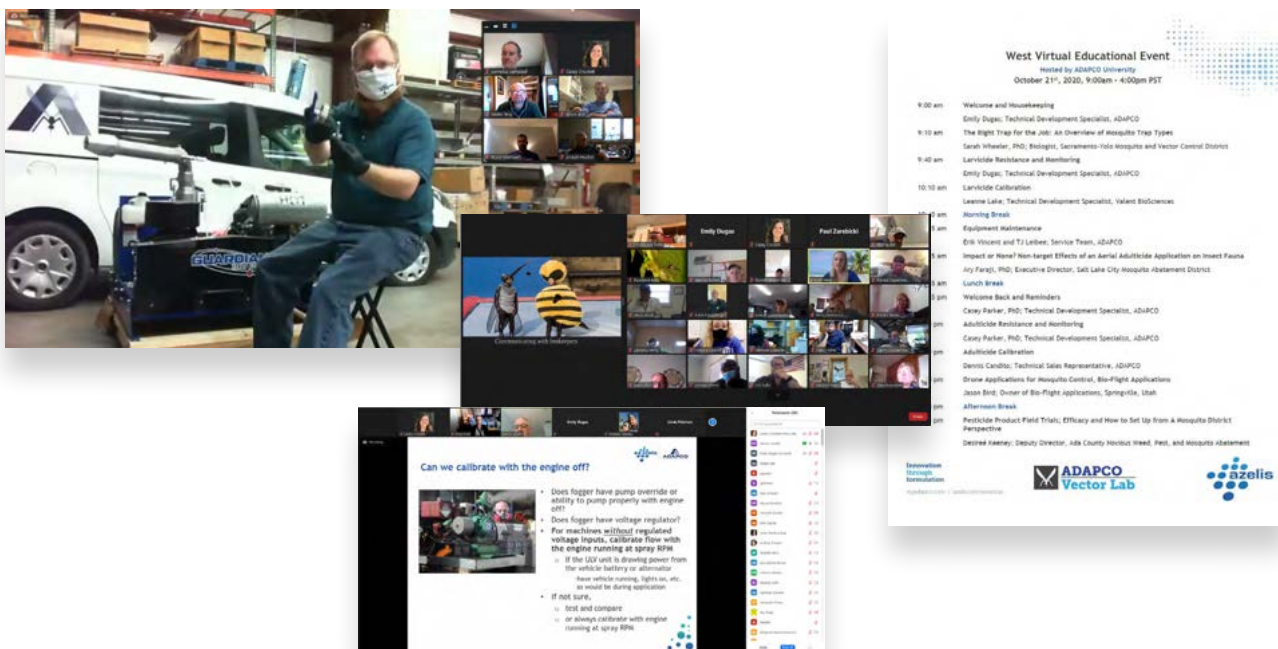
BACTIMOS, BIOFUSE, METALARV, TRIPLE RELEASE TECHNOLOGY, VECTOAC, VECTOPRIME, VECTOLEX, VECTOMAX, and VALENT BIOSCIENCES are trademarks of Valent BioSciences, LLC. Valent BioSciences owns registrations for these marks in the United States and elsewhere. ADAPCO is a registered trademark of ADAPCO, LLC.



ADAPCO's Training and Education

In 2020, ADAPCO responded to the training challenges created by COVID by offering 3 regional virtual educational events. These events featured content from local mosquito control programs, industry experts, and academic researchers.

Through these events, we were able to offer ~3,700 CEUs to 546 individuals across 28 states. ADAPCO is committed to continuing to grow and improve our training and education capabilities. Contact us to find out how we can help your program meet their training needs!



Thank you for visiting ADAPCO's Virtual Booth! Be sure to stop in and visit us "in-person" using the links on the main page of our virtual exhibit booth page.

